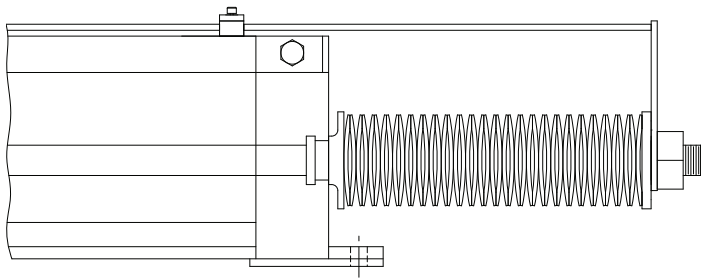
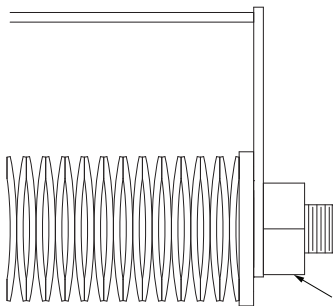




7. Lower the top over the screw assembly. (Note: Washers should be located outside the main frame.)



8. The end of the top plate should slip between the outboard washer and hex nut.

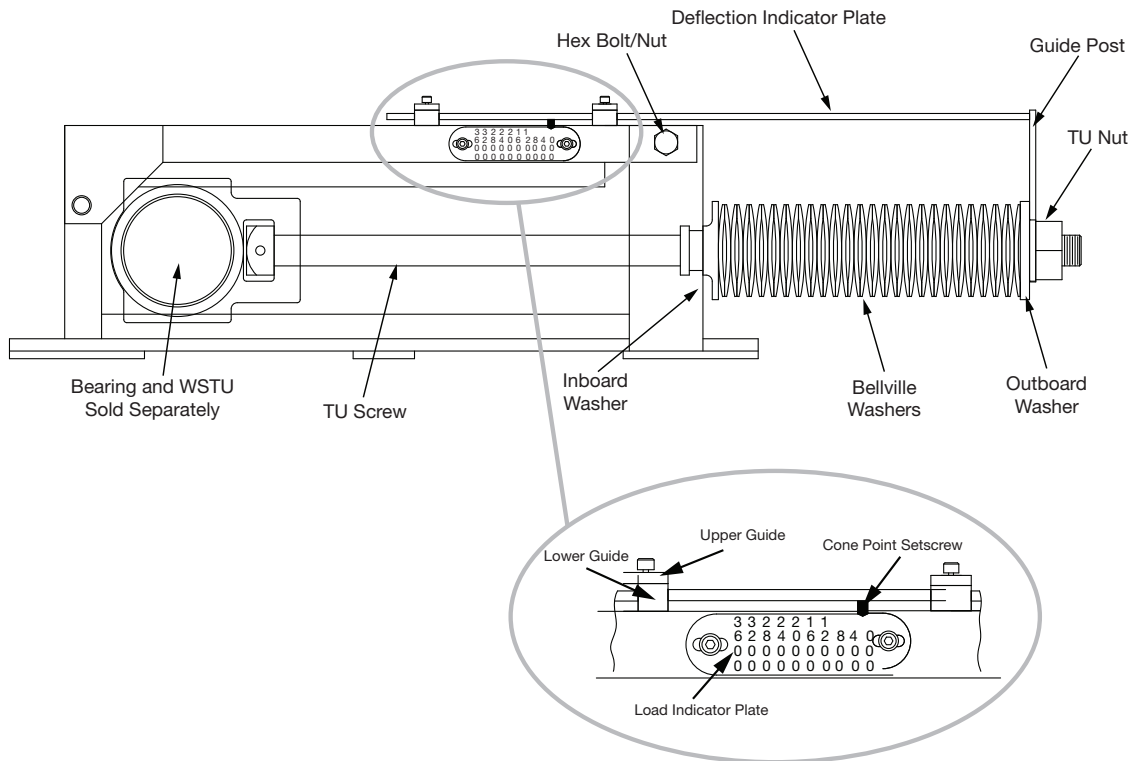


9. Repeat procedure for second take-up.  
10. Tighten the TU Nut until the appropriate load\* is displayed on the Load Indicator Plate.

**\*NOTE: Load values denoted on Load indicator Plate are the working load (lbs) for each individual frame. If the desired load is 400lbs, each of the Load Indicating Take-Ups would be set to 200lbs.**

Description	Complete Unit	Screw Assembly *
CPLI-400X12-TUFR	089571	089580
CPLI-502X12-TUFR	089572	089581
CPLI-515X12-TUFR	089573	089582

Screw Assembly consists of TU Screw, Inboard Washer, Bellville Washer, Outboard Washer and TU Nut.



Dodge Industrial, Inc.  
1061 Holland Road  
Simpsonville, SC 29681  
+1 864 297 4800

