



Rigid Couplings

RIBBED RIGID

RIBBED RIGID SPECIFICATION

Rigid Couplings provide a connection between two perfectly aligned shafts. Ribbed Rigid Couplings are axially split to clamp on shafts of the same diameter and held together by bolts. The coupling uses one key over the entire length and permits quick and easy installation and removal.

HOW TO ORDER

TAPER-LOCK consist of:
(1) Ribbed Rigid Coupling Assembly
(Complete, by bore size)

NOMENCLATURE

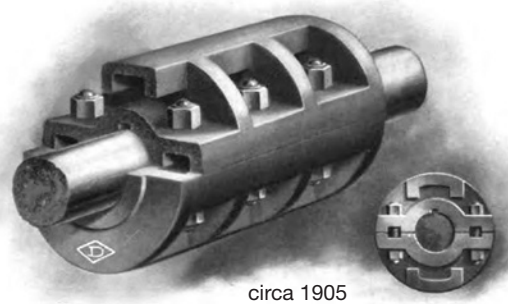
Ribbed Rigid _____ 2-3/4
Bore Size of Coupling

FEATURES/BENEFITS PAGE PT1-76	SELECTION/DIMENSIONS PAGE PT1-76	MODIFICATION/ACCESSORIES PAGE PT1-79	ENGINEERING/TECHNICAL PAGE PT1-81
----------------------------------	-------------------------------------	---	--------------------------------------



SELECTION/DIMENSIONS

Ribbed Rigid



circa 1905

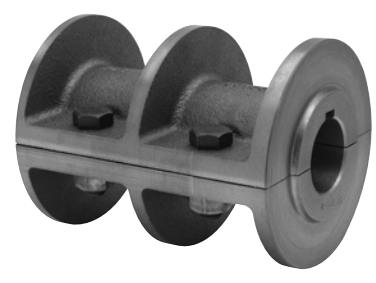


Figure 1
Today's Ribbed Rigid Coupling

“Grim Death” Compression Coupling as presented in the 1905 Dodge Catalog, is an original Dodge design. “Grim Death” is a substantial safety coupling adapted to any class of service, and complies with all legal requirements as to safety by having bolt heads and nuts protected. “Grim Death” coupling is finished and polished on periphery and faced on ends.

For Nominal Shaft of:	Style Cplg. Figure no.	Part Number	Max RPM	Torque (In-Lb)	Weight	Coupling Dia x Length	Keyway Size	Key Furnished	Bolts	
									No.	Dia.
1	1	009001	5360	1200	6.0					
1-3/16	1	009002	5360	2000	5.5	3-5/8 x 5-1/4	1/4 x 1/8	1/4 x 1/4 x 5-1/4	4	3/8
1-1/4	1	009003	5360	2300	5.2					
1-3/8	1	009004	4130	3100	11.0	4-5/8 x 6-3/16	5/16 x 5/32	5/16 x 5/16 x 6-3/16	4	1/2
1-7/16	1	009005	4130	3500	10.5	4-5/8 x 6-3/16	3/8 x 3/16	3/8 x 3/8 x 6-3/16	4	1/2
1-1/2	1	009006	4130	4000	10.2					
1-11/16	1	009007	3965	5700	13.7	4-13/16 x 7-1/16	3/8 x 3/16	3/8 x 3/8 x 7-1/16	4	1/2
1-3/4	1	009008	3965	6300	13.3					
1-7/8		009009	3635	7800	19.4					
1-15/16	★	009010	3635	8600	20.6	5-1/4 x 7-15/16	1/2 x 1/4	1/2 x 1/2 x 7-15/16	4	1/2
2		009011	3635	9400	20.0					
2-3/16		009013	3180	12400	29.1					
2-1/4	★	009012	3180	13400	29.0	6 x 8-5/8	1/2 x 1/4	1/2 x 1/2 x 8-5/8	4	5/8
2-7/16	2	009015	2965	17100	37.3	6-7/16 x 9-11/16	5/8 x 5/16	5/8 x 5/8 x 9-11/16	6	5/8
2-1/2	2	009016	2965	18400	36.6					
2-11/16	2	009017	2830	22900	43.4	6-3/4 x 10-9/16	5/8 x 5/16	5/8 x 5/8 x 10-9/16	6	5/8
2-3/4	2	009014	2830	24500	43.0					
2-15/16	2	009019	2545	29900	58.7	7-1/2 x 11-3/8	3/4 x 3/8	3/4 x 3/4 x 11-3/8	6	3/4
3	2	009020 *	2545	31800	56.2					
3-3/16	2	009022	2315	38200	80.5	8-1/4 x 12-1/4	3/4 x 3/8	3/4 x 3/4 x 12-1/4	6	7/8
3-1/4	2	009021 *	2315	40500	80.0	8-1/4 x 12-1/4	3/4 x 3/8	3/4 x 3/4 x 12-1/4	6	7/8
3-7/16	2	009023	2165	47900	94.6	8-13/16 x 13-3/16	7/8 x 7/16	7/8 x 7/8 x 13-3/16	6	7/8
3-1/2	2	009024 *	2165	50500	94.0	8-13/16 x 13-3/16	7/8 x 7/16	7/8 x 7/8 x 13-3/16	6	7/8
3-15/16	2	009025	1900	72000	146.6	10-1/16 x 15-1/4	1 x 1/2	1 x 1 x 15-1/4	6	1
4	2	009027 *	1900	75400	146.0	10-1/16 x 15-1/4	1 x 1/2	1 x 1 x 15-1/4	6	1
4-7/16	3	009026	1775	103000	215.0	10-3/4 x 18-3/16	1 x 1/2	1 x 1 x 18-3/16	6	1-1/8
4-1/2	3	009031 *	1775	107400	214.4	10-3/4 x 18-3/16	1 x 1/2	1 x 1 x 18-3/16	6	1-1/8
4-15/16	3	009028	1625	142000	276.3	11-3/4 x 19-5/8	1-1/4 x 5/8	1-1/4 x 1-1/4 x 19-5/8	6	1-1/8
5	3	009043 *	1625	147500	275.6	11-3/4 x 19-5/8	1-1/4 x 5/8	1-1/4 x 1-1/4 x 19-5/8	6	1-1/8
5-7/16	4	009029	1390	190000	426.2	13-3/4 x 20-3/8	1-1/4 x 5/8	1-1/4 x 1-1/4 x 20-3/8	8	1-1/8
5-1/2	4	009050 *	1390	196000	425.4	13-3/4 x 20-3/8	1-1/4 x 5/8	1-1/4 x 1-1/4 x 20-3/8	8	1-1/8
5-15/16	3	009042 *	1365	247000	426.0	14 x 20-3/4	1-1/2 x 3/4	1-1/2 x 1-1/2 x 20-3/4	6	1-1/4
6	3	009054 *	1365	255000	425.3	14 x 20-3/4	1-1/2 x 3/4	1-1/2 x 1-1/2 x 20-3/4	6	1-1/4
7	4	009044 *	1230	404000	560.8	15-1/2 x 21-15/16	1-3/4 x 3/4	1-3/4 x 1-1/2 x	8	1-1/4

★ Same as Fig. 1 except with a rib parallel to the bore between each pair of flanges
 * Standard non-stock size. Consult DODGE Engineering for delivery

Note: Coupled shafts must be the same diameters

NOTE: Instruction manuals for Ribbed Rigid Couplings available on www.baldor.com

FEATURES/BENEFITS PAGE PT1-76	SPECIFICATION/HOW TO ORDER PAGE PT1-76	MODIFICATION/ACCESSORIES PAGE PT1-79	ENGINEERING/TECHNICAL PAGE PT1-81
----------------------------------	---	---	--------------------------------------