

Instruction Manual Seal Installation for

DODGE® Type K, DOUBLE-INTERLOCK, TAF, Type E and Type C Bearings

These instructions must be read thoroughly before installation or operation.

General Information

All lip seals for the K, Double-Interlock, TAF, and E Type bearings are press fitted on the inside diameter of the housings as shown in the drawings.

It is extremely important to use cylindrical sleeves or plungers with square faces with proper inside and outside diameters when pressing on the faces of the seals.

Note that all seals for Type K, Double-Interlock, TAF, and Type E bearings are located from the face of the cone. The cylindrical sleeves or plungers used to press the seals must have shoulders that bottom against the face of the cone to control location.

If you need assistance in the rebuilding of bearings or in the assembly of the seals, contact Baldor Electric Company, DODGE Engineering, Greenville, SC, 864-284-5700.

Figures 3, 4 and 5 - Location of Lip Seals for
DOUBLE-INTERLOCK, TAF and Type E

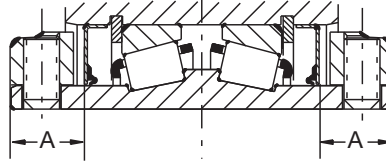


Figure 3 - Seal Installation for
1-3/16" to 3"

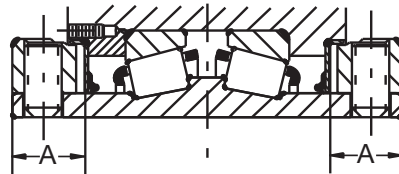


Figure 4 - Seal Installation for
3-3/16" to 5"

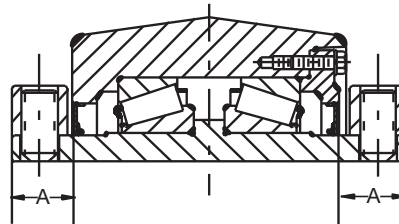


Figure 5 - Seal Installation for
5-7/16" to 7"

Table 2 – Type E, TAF and
DOUBLE-INTERLOCK

Shaft Size (in.)	A (Face of cone to face of seal)
1-3/16 1-1/4	.557
1-3/8 1-7/16	.578
1-1/2 1-5/8 1-11/16	.642
1-3/4 1-7/8 1-15/16 2	.640
2-3/16	.703
2-1/4 2-7/16 2-1/2	.767
2-11/16 2-3/4 2-15/16 3	.892
3-3/16 3-1/4 3-7/16 3-1/2	.953
3-15/16 4	1.123
4-7/16 4-1/2	1.311
4-15/16 5	1.311
5-7/16 5-15/16 6	1.625
6-7/16 6-1/2 6-15/16 7	1.740

Table 1 – Type K

Shaft Size (in.)	A (Face of cone to face of seal)	B (Face of cone to face of seal)
1-3/16 1-1/4	.557	.192
1-3/8 1-7/16	.578	.075
1-1/2 1-5/8 1-11/16	.642	.093
2-1/4 2-7/16 2-1/2	.767	.080
2-11/16 2-3/4 2-15/16 3	.892	.080
3-3/16 3-7/16 3-1/2	.953	.144
3-15/16	1.123	.127

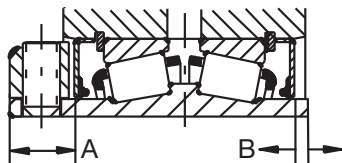


Figure 1 - Location of Seals for
Type K (1-3/16" to 3")

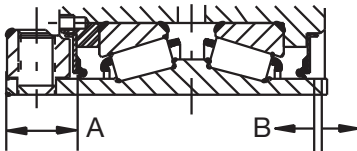


Figure 2 - Location of Seals for
Type K (3-3/16" to 3-15/16")

NOTE: Shaft sizes 1-3/16" through 1-11/16" refer to Figure 1.
Shaft sizes 2-1/4" through 3-15/16" refer to Figure 2.

WARNING: Because of the possible danger to person(s) or property from accidents which may result from the improper use of products, it is important that correct procedures be followed: Products must be used in accordance with the engineering information specified in the catalog. Proper installation, maintenance and operation procedures must be observed. The instructions in the instruction manuals must be followed. Inspections should be made as necessary to assure safe operation under prevailing conditions. Proper guards and other suitable safety devices or procedures as may be desirable or as may be specified in safety codes should be provided, and are neither provided by Baldor Electric Company nor are the responsibility of Baldor Electric Company. This unit and its associated equipment must be installed, adjusted and maintained by qualified personnel who are familiar with the construction and operation of all equipment in the system and the potential hazards involved. When risk to persons or property may be involved, a fail safe device must be an integral part of the driven equipment beyond the speed reducer output shaft.



The inner seals of the Type C bearings slide with a loose fit on the outside diameter of the adapter sleeve and are held in place against the face of the cones by the locking collars. The locking collars also serve to set the bearing end play. The outer seals of the Type C bearings are press fitted on the inside of the insert housing.

It is extremely important to use cylindrical sleeves or plungers with square faces with proper inside and outside diameters when pressing on the faces of the seals.

On the Type C bearings the outer seal, the only seal pressed on, is located with reference to the unit housing face.

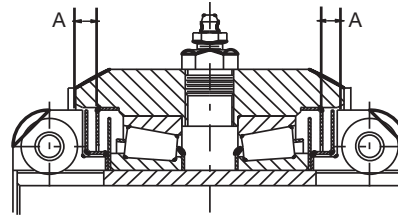


Figure 6 - Location of Lip Seals for Type C

Table 6 – Type C

Shaft Size (in.)	A (Face of insert housing to face of outer seal)
1-3/16 1-1/4 1-5/16 1-7/16	.225
1-1/2 1-11/16 1-3/4	.274
1-15/16	.266
2 2-3/16 2-1/4	.394
2-3/8 2-7/16	.424
2-1/2 2-11/16	.337
2-7/8 2-15/16	.345
3 3-3/16 3-1/4 3-7/16	.383
3-1/2 3-11/16 3-3/4 3-7/8 3-15/16 4	.702
4-7/16 4-1/2	.671
4-15/16	.702



World Headquarters

P.O. Box 2400, Fort Smith, AR 72902-2400 U.S.A., Ph: (1) 479.646.4711, Fax (1) 479.648.5792, International Fax (1) 479.648.5895

Dodge Product Support

6040 Ponders Court, Greenville, SC 29615-4617 U.S.A., Ph: (1) 864.297.4800, Fax: (1) 864.281.2433

www.baldor.com

© Baldor Electric Company
MN3034 (Replaces 499794)



All Rights Reserved. Printed in USA.
5/10 Printshop 100