

Selection

Screw conveyor shaft mount speed reducers Screw conveyor shaft mount

When to use Easy Selection

The Easy Selection tables for shaft mount reducers are for electric motor selections up to 75 horsepower with output speeds up to 400 RPM, using AGMA recommended application class numbers. For extreme shock or high energy loads which must be absorbed, as when stalling; for power source other than an electric motor; or for extreme ambient temperatures, or oversized equipment, consult Dodge application engineering, (864) 284-5700.

How to select

Step 1: Determine class of service – See Application Classification table on page G1-6 to determine Load Classification for applications under normal conditions. Find the type application and duty cycle that most closely matches your specific application.

Class I Steady load not exceeding Motor Hp rating and light shock loads during 10 hours a day. Moderate shock loads are allowable if operation is intermittent.

For Class I applications, the maximum value of starting and momentary peak loads should not exceed 2 x Motor Hp rating. If it exceeds this amount it should be divided by 2 and the result used in the selection table instead of the Motor Hp rating.

Class II Steady load not exceeding motor Hp rating for over 10 hours a day. Moderate shock loads are allowable during 10 hours a day.

For Class II applications, the maximum value of starting and momentary peak loads should not exceed 2.8 x motor Hp rating. If it exceeds this amount it should be divided by 2.8 and the result used in the selection table instead of the motor Hp rating.

Class III Moderate shock loads for over 10 hours a day. Heavy shock loads are allowable during 10 hours a day.

For Class III applications, the maximum value of starting and momentary peak loads should not exceed 4 x motor Hp rating. If it exceeds this amount it should be divided by 4 and the result used in the selection table instead of the motor Hp rating.

Step 2: Determine reducer size – See the Easy Selection tables, pages G3-79 thru G3-85. From Selection Class I, II or III tables, read the reducer size for the application horsepower and output speed. Note: For applications where fan cooling is unacceptable use the Easy Selection tables with an increased Class number. Where more than one reducer selection is listed, the most economical ratio is generally listed first. See page G3-173 for maximum input and output speeds, overhung load ratings and WR2 ratings.

Step 3: Check dimensions – See “Selection and Dimensions” sections, pages G3-86 thru G3-115 for reducer dimensions, weights and part numbers. See “Engineering and technical” section, page G3-167 for reducer and mounting positions.

Step 4: Select screw conveyor drive shaft and adapter to fit screw diameter. See “Selection and Dimensions” section for compatibility of screw diameter and drive shaft diameter.

Step 5: Select a belt drive arrangement from the sheave ratio table, pages G3-158 through G3-160, select the required sheave ratio for the belt drive. Select the belt drive so that the sheave mounted on the reducer shaft is not smaller than the minimum sheave diameter shown on page G3-157. **Note:** Mount the sheave as close as possible to the reducer to minimize the effect of overhung load on the reducer.

Step 6: Select accessories – See “Modifications and Accessories” section, pages G3-116 thru G3-122, for description, dimensions, weights, and part numbers for accessories available for the screw conveyor drive reducer selected:

- Motor mounts
- Belt guards
- Cooling fans
- Auxiliary seal kits
- Alternative drive shaft styles
- Filter breathers

Note: Screw conveyor drive reducers are shipped without oil. Screw conveyor drive reducers are suitable from stock for vertical or incline mounting, no modification required.

Selection

Screw conveyor shaft mount speed reducers Screw conveyor shaft mount

Example: Easy selection method - SCXT Screw conveyor drive reducers

A 5 Hp 1750 RPM motor is used to drive a heavy duty screw conveyor that runs 10 hours per day in a local feed mill, conveying grain. User needs a replacement reducer drive for a CEMA standard screw conveyor with a 12" diameter screw and 2-7/16" diameter drive shaft. Conveyor speed is 72 RPM.

Step 1: Determine class of service – From the table on page G1-6, locate “conveyors, general purpose; screw conveyor heavy duty, not uniformly loaded” for 3 to 10 hours per day. This load is classified as a Class II application.

Step 2: Determine reducer size – From the Class II Selection table, page G3-82, find the column for 5 Hp and read down to 72 RPM. An SCXT225 reducer is the correct selection. Check maximum input and output speed, overhung load, and WR^2 requirements with reducer ratings on page G3-173.

Step 3: Check dimensions – See “Selection and Dimensions” section for reducer dimensions, weights, part numbers and other pertinent drive dimensions. See “Engineering and Technical” section page G3-167 for information on mounting positions.

Step 4: Select screw conveyor drive shaft and adapter to fit screw diameter-See “Selection and Dimensions” section, page G3-90. Here we verify that a 2-7/16” diameter drive shaft is compatible with 12” diameter screw. From this same page, select a C2A adapter which fits the 2-7/16” CEMA standard screw conveyor drive shaft.

Step 5: Select a belt drive arrangement – From the sheave ratio table, page G3-158, select a V-drive ratio for the conveyor speed of 72 RPM. With this information, select a belt drive that meets your customer’s needs – i.e. belt style preference, service factor requirements, Taper Lock or QD mounting, etc. Sheave diameter must not be less than minimum diameters shown in the “Minimum sheave diameters for Dodge Torque-Arm reducers” table on page G3-157.

Step 6: Select accessories – See “Selection and Dimensions” page G3-91 and “Modifications and Accessories” page G3-120 to pick out accessories for this application:

M214 Motor mount-to mount motor to side of SCXT225 reducer.

SCXT2D Expanded metal belt guard-to cover and protect the rotating belt drive.

Selection

Screw conveyor shaft mount speed reducers Selection guide: SCXT screw conveyor drive reducers

This is a handy reference sheet for quick selection and specification of Dodge screw conveyor drive reducers.

Use it to identify information needed to make an accurate selection with a step-by-step selection format for choosing reducer, accessories and v-drive.

Use this page to make your own selections or send this form, with application data to Dodge for assistance.

Name _____ Company name _____

Phone no. _____ Fax no. _____

Application data

Type of driven equipment _____

Hours of service per day _____ Class of service _____

Type of load Uniform _____ Moderate _____ Shock _____

Motor type Hp _____ RPM _____ Frame size _____ Shaft size _____

Screw conveyor RPM _____

Drive shaft diameter and type _____

Adapter type _____

Unusual ambient temperature _____

Other pertinent application characteristics (i.e.,dusty environment, reversing duty, start/stop cycles, etc.) _____

Reducer drive selection

Step 1 – Determine class of service

Step 2 – From appropriate service class table, select reducer size and rotation that meets application Hp and driven RPM requirements

Step 3 – Select drive shaft with diameter to fit screw size _____

Determine type of drive shaft needed Standard _____ Stainless steel _____

3-hole standard _____ 3-hole stainless _____

Step 4 – Select adapter C Standard _____

AC Adjustable packing kit _____

Step 5 – Select accessories required for application

Motor mount Standard _____ Long _____

Bushing cover Standard _____ Long _____

Cooling fan _____ Auxiliary seal kit _____ Filter breather _____

Other _____

V-belt drive specification

Service factor _____ V-belt drive ratio needed _____

Belt center distance _____ Type of belt desired _____

Driver: Shaft diameter _____ Driven Shaft diameter _____

Sheave _____ Sheave _____

Bushing _____ Bushing _____

Belts Size _____ Quantity _____

Easy selection

Screw conveyor shaft mount speed reducers

Class I selection table SCXT reducers ★ (1.0 service factor)

Hp	Output RPM	Reducer selection	
		Single	Double
1/4	4-70	-	SCXT125A SCXT115A
	71-85	-	SCXT115A SCXT125A
	86-115	-	SCXT115A SCXT109A
	116-140	SCXT105	SCXT109A SCXT115A
	141-200	SCXT105	SCXT109A
	201-400	SCXT105	- -
1/3	5-70	-	SCXT125A SCXT115A
	71-85	-	SCXT115A SCXT125A
	86-115	-	SCXT115A SCXT109A
	116-140	SCXT105	SCXT109A SCXT115A
	141-200	SCXT105	SCXT109A
	201-400	SCXT105	- -
1/2	4-6	-	SCXT225A
	7-70	-	SCXT125A SCXT115A
	71-85	-	SCXT115A SCXT125A
	86-115	-	SCXT115A SCXT109A
	116-140	SCXT105	SCXT109A SCXT115A
	141-200	SCXT105	SCXT109A
201-400	SCXT105	- -	
3/4	4-5	-	SCXT325B
	6-10	-	SCXT225A
	11-70	-	SCXT125A SCXT115A
	71-85	-	SCXT115A SCXT125A
	86-115	-	SCXT115A SCXT109A
	116-140	SCXT105	SCXT109A SCXT115A
141-200	SCXT105	SCXT109A	
201-400	SCXT105	- -	
1	4-5	-	SCXT425B
	6-7	-	SCXT325B
	8-15	-	SCXT225A
	16-70	-	SCXT125A SCXT115A
	71-85	-	SCXT115A SCXT125A
	86-115	-	SCXT115A SCXT109A
116-140	SCXT105	SCXT109A SCXT115A	
141-200	SCXT105	SCXT109A	
201-400	SCXT105	- -	
1-1/2	4	-	SCXT525C
	5-7	-	SCXT425B
	8-12	-	SCXT325B
	13-23	-	SCXT225A
	24-70	-	SCXT125A SCXT115A
	71-85	-	SCXT115A SCXT125A
86-115	-	SCXT115A SCXT109A	
116-140	SCXT105	SCXT109A SCXT115A	
141-200	SCXT105	SCXT109A	
201-400	SCXT105	- -	

Hp	Output RPM	Reducer selection	
		Single	Double
2	4-6	-	SCXT525C
	7-10	-	SCXT425B
	11-17	-	SCXT325B
	18-32	-	SCXT225A SCXT215A
	33-70	-	SCXT125A SCXT115A
	71-85	-	SCXT115A SCXT125A
3	86-115	-	SCXT115A SCXT109A
	116-140	SCXT105	SCXT109A SCXT115A
	141-200	SCXT105	SCXT109A
	201-400	SCXT105	- -
	4-5	-	SCXT625A
	6-10	-	SCXT525C
5	11-15	-	SCXT425B
	16-26	-	SCXT325B -
	27-51	-	SCXT225A SCXT215A
	52-70	-	SCXT125A SCXT115A
	71-85	-	SCXT115A SCXT125A
	86-115	-	SCXT115A SCXT109A
116-140	SCXT105	SCXT109A SCXT115A	
141-200	SCXT105	SCXT109A	
201-400	SCXT105	- -	
7-1/2	5-6	-	SCXT725A
	7-9	-	SCXT625A
	10-17	-	SCXT525C
	18-26	-	SCXT425B SCXT415B
	27-46	-	SCXT325B SCXT315B
	47-70	-	SCXT225A SCXT215A
10	71-85	-	SCXT215A SCXT225A
	86-92	-	SCXT109A SCXT215A
	93-115	-	SCXT115A SCXT109A
	116-119	-	SCXT109A SCXT115A
	120-140	SCXT105	SCXT109A SCXT115A
	141-200	SCXT105	SCXT109A
201-400	SCXT105	- -	
15	4-6	-	SCXT825A
	7-9	-	SCXT725A
	10-15	-	SCXT625A
	16-26	-	SCXT525C
	27-40	-	SCXT425B SCXT415B
	41-70	-	SCXT325B SCXT315B
20	71-74	-	SCXT315B SCXT325B
	75-85	-	SCXT215A SCXT225A
	86-95	-	SCXT215A SCXT209A
	96-140	SCXT205	SCXT209A SCXT215A
	141-200	SCXT205	SCXT209A
	201-231	SCXT205	- -

★ See page G3-165 for lubrication for 15 RPM and slower.

Easy selection

Screw conveyor shaft mount speed reducers

Class I selection table SCXT reducers ★ (1.0 service factor)

Hp	Output RPM	Reducer selection	
		Single	Double
10	6-8	-	SCXT825A
	9-12	-	SCXT725A
	13-20	-	SCXT625A
	21-36	-	SCXT525C SCXT515C
	37-56	-	SCXT425B SCXT415B
	57-70	-	SCXT325B SCXT315B
	71-85	-	SCXT315B SCXT325B
	86-103	-	SCXT315B SCXT309B
	104-115	-	SCXT215A SCXT209A
	116-140	SCXT305A	SCXT215A
141-158	SCXT305A	SCXT309B	
159-200	SCXT305A	SCXT309B	
201-400	SCXT205	-	
15	9-13	-	SCXT825A
	14-19	-	SCXT725A
	20-32	-	SCXT625A SCXT615A
	33-56	-	SCXT525C SCXT515C
	57-70	-	SCXT425B SCXT415B
	71-85	-	SCXT415B SCXT425B
	86-93	-	SCXT415B SCXT409B
	94-115	-	SCXT309B + SCXT315B
	116-140	SCXT405A	SCXT315B SCXT309B +
	141-145	SCXT405A	SCXT309B +
146-200	SCXT305A	SCXT309B +	
201-400	SCXT305A	-	
20	13-18	-	SCXT825A
	19-26	-	SCXT725A SCXT715A
	27-45	-	SCXT625A SCXT615A
	46-70	-	SCXT525C SCXT515C
	71-78	-	SCXT515C SCXT525C
	79-85	-	SCXT415B SCXT42B
	86-115	-	SCXT415B SCXT409B +
	116-140	SCXT405A	SCXT409B + SCXT415B +
	141-200	SCXT405A	SCXT309B +
	201-241	SCXT405A	-
242-400	SCXT305A +	-	

Hp	Output RPM	Reducer selection	
		Single	Double
25	16-23	-	SCXT825A
	24-33	-	SCXT725A SCXT715A
	34-59	-	SCXT625A SCXT615A
	60-70	-	SCXT525C + SCXT515C +
	71-80	-	SCXT515C + SCXT525C +
	81-101	-	SCXT515C + SCXT509C +
	102-132	SCXT505A	SCXT415B + SCXT409B +
	133-140	SCXT505A	SCXT409B + SCXT415B +
	141-163	SCXT505A	SCXT409B +
	164-200	SCXT405A +	SCXT409B +
201-400	SCXT405A +	-	
30	20-28	-	SCXT825A SCXT815A
	29-41	-	SCXT725A SCXT715A
	42-70	-	SCXT625A SCXT615A
	71-75	-	SCXT615A SCXT625A
	76-115	-	SCXT515C + SCXT509C +
	116-125	SCXT605	SCXT509C + SCXT515C +
	126-131	SCXT605	SCXT409B +
	132-200	SCXT505A	SCXT409B +
	201-215	SCXT505A +	-
	216-400	SCXT405A +	-
40	26-38	-	SCXT825A SCXT815A
	39-57	-	SCXT725A SCXT715A
	58-70	-	SCXT625A SCXT615A
	71-81	-	SCXT615A+ SCXT625A +
	82-114	SCXT605	SCXT615A + SCXT609A +
	115-125	SCXT605	SCXT515C + SCXT509C +
	126-200	SCXT605	SCXT509C +
	201-241	SCXT605	-
	242-400	SCXT505A +	-
	50	33-49	-
50-70		-	SCXT725A SCXT715A
71-74		-	SCXT715A SCXT725A
75-125		-	SCXT615A + SCXT709A +
126-163		SCXT605 +	SCXT709A +
164-200		SCXT605 +	SCXT609A +
201-400		SCXT605 +	-

★ See page G3-165 for lubrication for 15 RPM and slower.

+ Fan cooling required – see page G3-75

Easy selection

Screw conveyor shaft mount speed reducers

Class I selection table SCXT reducers ★ (1.0 service factor)

Hp	Output RPM	Reducer selection		
		Single	Double	
60	40-60	-	SCXT825A	SCXT815A
	61-70	-	SCXT725A +	SCXT715A +
	71-120	-	SCXT715A +	SCXT709A +
	121-131	SCXT705		SCXT709A +
	132-200	SCXT605 +		SCXT709A +
	201-400	SCXT605 +	-	-
75	51-70	-	SCXT825A	SCXT815A
	71-78	-		SCXT815A +
	79-120	-	SCXT715A +	SCXT709A +
	121-200	SCXT705		SCXT709A +
	201-210	SCXT705	-	-
	211-400	SCXT605 +	-	-

★ See page G3-165 for lubrication for 15 RPM and slower.

+ Fan cooling required – see page G3-75

Easy selection

Screw conveyor shaft mount speed reducers

Class II selection table SCXT reducers ★ (1.4 service factor)

Hp	Output RPM	Reducer selection	
		Single	Double
1/4	5-70	-	SCXT125A SCXT115A
	71-85	-	SCXT115A SCXT125A
	86-115	-	SCXT115A SCXT109A
	116-140	SCXT105	SCXT109A SCXT115A
	141-200	SCXT105	SCXT109A
	201-400	SCXT105	- -
1/3	4-6	-	SCXT225A
	7-70	-	SCXT125A SCXT115A
	71-85	-	SCXT115A SCXT125A
	86-115	-	SCXT115A SCXT109A
	116-140	SCXT105	SCXT109A SCXT115A
	141-200	SCXT105	SCXT109A
	201-400	SCXT105	- -
1/2	4-5	-	SCXT325B
	6-9	-	SCXT225A
	10-70	-	SCXT125A SCXT115A
	71-85	-	SCXT115A SCXT125A
	86-115	-	SCXT115A SCXT109A
	116-140	SCXT105	SCXT109A SCXT115A
	141-200	SCXT105	SCXT109A
	201-400	SCXT105	- -
3/4	4-5	-	SCXT425B
	6-8	-	SCXT325B
	9-16	-	SCXT225A
	17-70	-	SCXT125A SCXT115A
	71-85	-	SCXT115A SCXT125A
	86-115	-	SCXT115A SCXT109A
	116-140	SCXT105	SCXT109A SCXT115A
	141-200	SCXT105	SCXT109A
1	201-400	SCXT105	- -
	5-7	-	SCXT425B
	8-11	-	SCXT325B
	12-22	-	SCXT225A
	23-70	-	SCXT125A SCXT115A
	71-85	-	SCXT115A SCXT125A
	86-115	-	SCXT115A SCXT109A
	116-140	SCXT105	SCXT109A SCXT115A
	141-200	SCXT105	SCXT109A
	201-400	SCXT105	- -
1-1/2	5-6	-	SCXT525C
	7-11	-	SCXT425B
	12-18	-	SCXT325A
	19-34	-	SCXT225A SCXT215A
	35-70	-	SCXT125A SCXT115A
	71-85	-	SCXT115A SCXT125A
	86-115	-	SCXT115A SCXT109A
	116-140	SCXT105	SCXT109A SCXT115A
	141-200	SCXT105	SCXT109A
	201-400	SCXT105	- -

Hp	Output RPM	Reducer selection	
		Single	Double
2	4-5	-	SCXT625A
	6-9	-	SCXT525C
	10-14	-	SCXT425B
	15-24	-	SCXT325B SCXT315B
	25-47	-	SCXT225A SCXT215A
	48-70	-	SCXT125A SCXT115A
	71-85	-	SCXT115A SCXT125A
	86-115	-	SCXT115A SCXT109A
	116-140	SCXT105	SCXT109A SCXT115A
	141-200	SCXT105	SCXT109A
3	201-400	SCXT105	- -
	4-5	-	SCXT725A
	6-8	-	SCXT625A
	9-14	-	SCXT525C
	15-22	-	SCXT425B SCXT415B
	23-38	-	SCXT325B SCXT315B
	39-70	-	SCXT225A SCXT215A
	71-75	-	SCXT215A SCXT225A
	76-85	-	SCXT115A SCXT125A
	86-115	-	SCXT115A SCXT109A
5	116-140	SCXT105	SCXT109A SCXT115A
	141-200	SCXT105	SCXT109A
	201-400	SCXT105	- -
	4-6	-	SCXT825A
	7-8	-	SCXT725A
	9-14	-	SCXT625A
	15-24	-	SCXT525C
	25-37	-	SCXT425B SCXT415B
	38-69	-	SCXT325B SCXT315B
	70-85	-	SCXT215A SCXT225A
7-1/2	86-89	-	SCXT215A SCXT209A
	90-136	SCXT205	SCXT209A SCXT215A
	137-140	SCXT205	SCXT115A SCXT209A
	141-191	SCXT205	SCXT109A
	192-200	SCXT105	SCXT109A
	201-400	SCXT105	- -
	6-9	-	SCXT825A
	10-13	-	SCXT725A
	14-21	-	SCXT625A
	22-38	-	SCXT525C SCXT515C
7-1/2	39-59	-	SCXT425B SCXT415B
	60-70	-	SCXT325B SCXT315B
	71-85	-	SCXT315B SCXT325B
	86-110	-	SCXT315B SCXT309B
	111-122	-	SCXT215A
	123-140	SCXT305A	SCXT209A SCXT215A
	141-183	SCXT305A	SCXT209A
	184-200	SCXT205	SCXT209A
	201-400	SCXT205	- -

★ See page G3-165 for lubrication for 15 RPM and slower

+ Fan cooling required – see page G3-75

Easy selection

Screw conveyor shaft mount speed reducers

Class II selection table SCXT reducers ★ (1.4 service factor)

Hp	Output RPM	Reducer selection			
		Single	Double		
10	8-12	-	SCXT825A		
	13-18	-	SCXT725A		
	19-29	-	SCXT625A	SCXT615A	
	30-52	-	SCXT525C	SCXT515C	
	53-70	-	SCXT425B	SCXT415B	
	71-84	-	SCXT415B	SCXT425B	
	85-130	-	SCXT315B	SCXT309B	
	131-140	SCXT305A	SCXT315B	SCXT309B	
	141-200	SCXT305A	SCXT309B		
	201-353	SCXT305A	-	-	
354-400	SCXT205	-	-		
15	13-19	-	SCXT825A		
	20-27	-	SCXT725A		
	28-47	-	SCXT625A	SCXT615A	
	48-70	-	SCXT525C	SCXT515C	
	71-82	-	SCXT515C	SCXT525C	
	83-117	-	SCXT415B	SCXT409B	
	118-140	SCXT405A	SCXT409B	SCXT415B	
	141-150	SCXT405A	SCXT409B		
	151-200	SCXT405A	SCXT309B +		
	201-269	SCXT405A	-	-	
270-400	SCXT305A	-	-		
20	18-26	-	SCXT825A		
	27-38	-	SCXT725A	SCXT715A	
	39-68	-	SCXT625A	SCXT615A	
	69-80	-	SCXT515C	SCXT525C	
	81-89	-	SCXT515C		
	90-117	-	SCXT515C +	SCXT509C +	
	118-125	SCXT505A	SCXT409B +	SCXT415B +	
	126-200	SCXT505A	SCXT409B +		
	201-400	SCXT405A +	-	-	
	25	23-33	-	SCXT825A	SCXT815A
34-49		-	SCXT725A	SCXT715A	
50-80		-	SCXT615A	SCXT625A	
81-94		-	SCXT615A	SCXT609A	
95-125		SCXT605	SCXT509C +	SCXT515C +	
126-174		SCXT605	SCXT509C +		
175-200		SCXT505A	SCXT409B +		
201-270		SCXT505A	-	-	
271-400		SCXT405A+	-	-	
30		28-41	-	SCXT825A	SCXT815A
	42-60	-	SCXT725A	SCXT715A	
	61-76	-	SCXT625A	SCXT615A	
	77-89	-	SCXT615A	SCXT609A	
	90-125	SCXT605	SCXT615A +	SCXT609A +	
	126-200	SCXT605	SCXT509C +		
	201-233	SCXT605	-	-	
	234-349	SCXT505A +	-	-	
	350-400	SCXT405A +	-	-	

Hp	Output RPM	Reducer selection			
		Single	Double		
40	37-56	-	SCXT825A	SCXT815A	
	57-75	-	SCXT725A	SCXT715A	
	76-88	-	SCXT715A		
	89-114	-	SCXT615A +	SCXT609A +	
	115-120	-	SCXT615A +	SCXT609A +	
	121-200	SCXT605	SCXT609A +		
	201-347	SCXT605 +	-	-	
	348-400	SCXT505A +	-	-	
	47-70	-	SCXT825A	SCXT815A	
	71-72	-	SCXT815A	SCXT825A	
50	73-95	-	SCXT715A +		
	96-110	SCXT705	SCXT709A	SCXT715A +	
	111-120	SCXT705	SCXT709A +	SCXT715A +	
	121-179	SCXT705	SCXT709A +		
	180-200	SCXT605	SCXT609A +		
	201-400	SCXT605 +	-	-	
	57-70	-	SCXT825A	SCXT815A	
	71-75	-	SCXT815A	SCXT825A	
	76-89	-	SCXT815A		
	90-120	SCXT705	SCXT715A +	SCXT709A +	
60	121-200	SCXT705	SCXT709A +		
	201-285	SCXT705	-	-	
	286-400	SCXT605 +	-	-	
	74-75	-	SCXT815A	SCXT825A	
	76-120	-	SCXT815A +		
	121-133	-	SCXT709A +		
	134-200	SCXT705	SCXT709A +		
	201-400	SCXT705	-	-	
	75	23-33	-	SCXT825A	SCXT815A
		34-49	-	SCXT725A	SCXT715A
50-80		-	SCXT615A	SCXT625A	
81-94		-	SCXT615A	SCXT609A	
95-125		SCXT605	SCXT509C +	SCXT515C +	
126-174		SCXT605	SCXT509C +		
175-200		SCXT505A	SCXT409B +		
201-270		SCXT505A	-	-	
271-400		SCXT405A+	-	-	

★ See page G3-165 for lubrication for 15 RPM and slower

+ Fan cooling required – see page G3-75

Easy selection

Screw conveyor shaft mount speed reducers

Class III selection table SCXT reducers ★ (2.0 service factor)

Hp	Output RPM	Reducer selection		
		Single	Double	
1/4	4-6	-	SCXT225A	
	7-70	-	SCXT125A SCXT115A	
	71-85	-	SCXT115A SCXT125A	
	86-89	-	SCXT115A SCXT109A	
	90-115	-	SCXT115A SCXT109A	
	116-140	SCXT105	SCXT109A SCXT115A	
	141-200	SCXT105	SCXT109A	
	201-400	SCXT105	-	
1/3	5-9	-	SCXT225A	
	10-70	-	SCXT125A SCXT115A	
	71-85	-	SCXT115A SCXT125A	
	86-115	-	SCXT115A SCXT109A	
	116-140	SCXT105	SCXT109A SCXT115A	
	141-200	SCXT105	SCXT109A	
	201-400	SCXT105	-	
	1/2	4-5	-	SCXT425B
6-7		-	SCXT325B	
8-15		-	SCXT225A	
16-70		-	SCXT125A SCXT115A	
71-85		-	SCXT115A SCXT125A	
86-115		-	SCXT115A SCXT109A	
116-140		SCXT105	SCXT109A SCXT115A	
141-200		SCXT105	SCXT109A	
3/4	4	-	SCXT525C	
	5-7	-	SCXT425B	
	8-12	-	SCXT325B	
	13-23	-	SCXT225A	
	24-70	-	SCXT125A SCXT115A	
	71-85	-	SCXT115A SCXT125A	
	86-115	-	SCXT115A SCXT109A	
	116-140	SCXT105	SCXT109A SCXT115A	
1	4-6	-	SCXT525C	
	7-10	-	SCXT425B	
	11-17	-	SCXT325B	
	18-32	-	SCXT225A	
	33-70	-	SCXT125A SCXT115A	
	71-85	-	SCXT115A SCXT125A	
	86-115	-	SCXT115A SCXT109A	
	116-140	SCXT105	SCXT109A SCXT115A	
2	4-5	-	SCXT825A	
	6-7	-	SCXT725A	
	8-12	-	SCXT625A	
	13-20	-	SCXT525C	
	21-32	-	SCXT425B SCXT415B	
	33-57	-	SCXT325B SCXT315B	
	58-70	-	SCXT225A SCXT215A	
	71-85	-	SCXT215A SCXT225A	
3	86-89	-	SCXT215A SCXT209A	
	90-113	SCXT205	SCXT215A SCXT209A	
	114-140	SCXT205	SCXT109A SCXT115A	
	141-155	SCXT205	SCXT109A	
	156-200	SCXT105	SCXT109A	
	201-400	SCXT105	-	
	4	4-5	-	SCXT625A
		6-10	-	SCXT525C
11-15		-	SCXT425B	
16-26		-	SCXT325B	
27-51		-	SCXT225A SCXT215A	
52-70		-	SCXT125A SCXT115A	
71-85		-	SCXT115A SCXT125A	
86-115		-	SCXT115A SCXT109A	
1-1/2	116-140	SCXT105	SCXT109A SCXT115A	
	141-200	SCXT105	SCXT109A	
	201-400	SCXT105	-	
	5-7	-	SCXT625A	
	8-13	-	SCXT525C	
	14-21	-	SCXT425B	
	22-36	-	SCXT325B SCXT315B	
	37-71	-	SCXT225A SCXT215A	
2	72-85	-	SCXT115A SCXT125A	
	86-115	-	SCXT115A SCXT109A	
	116-140	SCXT105	SCXT109A SCXT115A	
	141-200	SCXT105	SCXT109A	
	201-400	SCXT105	-	
	4-5	-	SCXT825A	
	6-7	-	SCXT725A	
	8-12	-	SCXT625A	
3	13-20	-	SCXT525C	
	21-32	-	SCXT425B SCXT415B	
	33-57	-	SCXT325B SCXT315B	
	58-70	-	SCXT225A SCXT215A	
	71-85	-	SCXT215A SCXT225A	
	86-89	-	SCXT215A SCXT209A	
	90-113	SCXT205	SCXT215A SCXT209A	
	114-140	SCXT205	SCXT109A SCXT115A	
4	141-155	SCXT205	SCXT109A	
	156-200	SCXT105	SCXT109A	
	201-400	SCXT105	-	
	4-6	-	SCXT525C	
	7-10	-	SCXT425B	
	11-17	-	SCXT325B	
	18-32	-	SCXT225A	
	33-70	-	SCXT125A SCXT115A	
1	71-85	-	SCXT115A SCXT125A	
	86-115	-	SCXT115A SCXT109A	
	116-140	SCXT105	SCXT109A SCXT115A	
	141-200	SCXT105	SCXT109A	
	201-400	SCXT105	-	
	4-6	-	SCXT525C	
	7-10	-	SCXT425B	
	11-17	-	SCXT325B	
1	18-32	-	SCXT225A	
	33-70	-	SCXT125A SCXT115A	
	71-85	-	SCXT115A SCXT125A	
	86-115	-	SCXT115A SCXT109A	
	116-140	SCXT105	SCXT109A SCXT115A	
	141-200	SCXT105	SCXT109A	
	201-400	SCXT105	-	

Hp	Output RPM	Reducer selection	
		Single	Double
1-1/2	4-5	-	SCXT625A
	6-10	-	SCXT525C
	11-15	-	SCXT425B
	16-26	-	SCXT325B
	27-51	-	SCXT225A SCXT215A
	52-70	-	SCXT125A SCXT115A
	71-85	-	SCXT115A SCXT125A
	86-115	-	SCXT115A SCXT109A
2	116-140	SCXT105	SCXT109A SCXT115A
	141-200	SCXT105	SCXT109A
	201-400	SCXT105	-
	5-7	-	SCXT625A
	8-13	-	SCXT525C
	14-21	-	SCXT425B
	22-36	-	SCXT325B SCXT315B
	37-71	-	SCXT225A SCXT215A
2	72-85	-	SCXT115A SCXT125A
	86-115	-	SCXT115A SCXT109A
	116-140	SCXT105	SCXT109A SCXT115A
	141-200	SCXT105	SCXT109A
	201-400	SCXT105	-
	4-5	-	SCXT825A
	6-7	-	SCXT725A
	8-12	-	SCXT625A
3	13-20	-	SCXT525C
	21-32	-	SCXT425B SCXT415B
	33-57	-	SCXT325B SCXT315B
	58-70	-	SCXT225A SCXT215A
	71-85	-	SCXT215A SCXT225A
	86-89	-	SCXT215A SCXT209A
	90-113	SCXT205	SCXT215A SCXT209A
	114-140	SCXT205	SCXT109A SCXT115A
4	141-155	SCXT205	SCXT109A
	156-200	SCXT105	SCXT109A
	201-400	SCXT105	-
	4-6	-	SCXT525C
	7-10	-	SCXT425B
	11-17	-	SCXT325B
	18-32	-	SCXT225A
	33-70	-	SCXT125A SCXT115A
1	71-85	-	SCXT115A SCXT125A
	86-115	-	SCXT115A SCXT109A
	116-140	SCXT105	SCXT109A SCXT115A
	141-200	SCXT105	SCXT109A
	201-400	SCXT105	-
	4-6	-	SCXT525C
	7-10	-	SCXT425B
	11-17	-	SCXT325B
1	18-32	-	SCXT225A
	33-70	-	SCXT125A SCXT115A
	71-85	-	SCXT115A SCXT125A
	86-115	-	SCXT115A SCXT109A
	116-140	SCXT105	SCXT109A SCXT115A
	141-200	SCXT105	SCXT109A
	201-400	SCXT105	-

Easy selection

Screw conveyor shaft mount speed reducers

Class III selection table SCXT reducers ★ (2.0 service factor)

Hp	Output RPM	Reducer selection		
		Single	Double	
5	6-8	-	SCXT825A	
	9-12	-	SCXT725A	
	13-20	-	SCXT625A	
	21-36	-	SCXT525C SCXT515C	
	37-56	-	SCXT425B SCXT415B	
	57-70	-	SCXT325B SCXT315B	
	71-85	-	SCXT315B SCXT325B	
	86-103	-	SCXT315B SCXT309B	
	104-114	SCXT305A	SCXT215A	SCXT309B
	115-140	SCXT305A	SCXT209A	SCXT215A
	141-167	SCXT305A		SCXT209A
	168-200	SCXT205		SCXT209A
7-1/2	201-400	SCXT205	-	
	9-13	-	SCXT825A	
	14-19	-	SCXT725A	
	20-32	-	SCXT625A SCXT615A	
	33-56	-	SCXT525C SCXT515C	
	57-70	-	SCXT425B SCXT415B	
	71-85	-	SCXT415B SCXT425B	
	86-93	-	SCXT415B SCXT409B	
	94-140	SCXT405A	SCXT309B	SCXT315B
	141-144	SCXT405A		SCXT309B
	145-200	SCXT305A		SCXT309B
	201-400	SCXT305A	-	-
10	13-18	-	SCXT825A	
	19-26	-	SCXT725A SCXT715A	
	27-45	-	SCXT625A SCXT615A	
	46-70	-	SCXT525C SCXT515C	
	71-78	-	SCXT515C SCXT525C	
	79-92	-	SCXT415B	
	93-105	-	SCXT415B SCXT409B	
	106-141	SCXT405A	SCXT409B	SCXT415B
	142-200	SCXT405A	SCXT309B	-
	201-241	SCXT405A	-	-
	242-400	SCXT305A	-	-
	15	20-28	-	SCXT825A SCXT815A
29-41		-	SCXT725A SCXT715A	
42-70		-	SCXT625A SCXT615A	
71-75		-	SCXT615A SCXT625A	
76-93		-	SCXT515C	
94-115		-	SCXT515C SCXT509C	
116-125		SCXT605	SCXT509C	SCXT515C
126-131		SCXT605		SCXT509C
132-200		SCXT505A		SCXT409B
201-215		SCXT505A	-	-
216-400		SCXT405A	-	-

Hp	Output RPM	Reducer selection		
		Single	Double	
20	26-38	-	SCXT825A SCXT815A	
	39-57	-	SCXT725A SCXT715A	
	58-70	-	SCXT625A SCXT615A	
	71-114	-	SCXT615A SCXT609A	
	115-125	SCXT605	SCXT509C+	SCXT515C+
	126-200	SCXT605		SCXT509C+
	201-218	SCXT605	-	-
	219-324	SCXT505A	-	-
	325-400	SCXT405A+	-	-
	33-49	-	SCXT825A	SCXT815A
	50-70	-	SCXT725A	SCXT715A
	71-74	-	SCXT715A	SCXT725A
25	75-104	-	SCXT615A SCXT609A	
	105-113	-	SCXT615A+ SCXT609A	
	114-125	SCXT605	SCXT615A+	SCXT609A+
	126-200	SCXT605		SCXT609A+
	201-294	SCXT605	-	-
	295-400	SCXT505A+	-	-
	40-60	-	SCXT825A	SCXT815A
	61-70	-	SCXT725A	SCXT715A
	71-98	-		SCXT715A
	99-125	-	SCXT615A	SCXT609A+
	126-131	SCXT705		SCXT609A+
	132-200	SCXT605		SCXT609A+
30	201-381	SCXT605	-	
	382-400	SCXT505A+	-	
	54-70	-	SCXT825A	SCXT815A
	71-84	-		SCXT815A
	85-89	-	SCXT715A	SCXT709A
	90-120	SCXT705	SCXT715A+	SCXT709A
	121-200	SCXT705		SCXT709A+
	201-249	SCXT705	-	-
	250-400	SCXT605+	-	-
	70-75	-	SCXT815A	SCXT825A
	76-110	-		SCXT815A
	111-120	-	SCXT715A+	SCXT709A+
40	121-123	-	SCXT709A+	
	124-200	SCXT705		SCXT709A+
	201-400	SCXT705	-	-
	86-120	-		SCXT815A
	142-161	-		SCXT709A+
	162-200	SCXT705		SCXT709A+
	201-400	SCXT705	-	-

★ See page G3-165 for lubrication for 15 RPM and slower

+ Fan cooling required – see page G3-75

Selection and dimensions

Screw conveyor shaft mount speed reducers
SCXT1A – Double reduction screw conveyor drives

SCXT1A Screw conveyor drives †

Reducers				
Size	Part no.	AGMA code	Ratio	Weight
SCXT109A	241480	107D09	9.44	45
SCXT115A	351163	107D15	15.35	45
SCXT125A	351164	107D25	25.64	45

Description	Part no.	Weight
C1A Adapter assembly ▲	351086	13
AC1 Adjustable packing kit ◆	356301	0.8
C1 x 1-1/2 Drive shaft ★	351094	7.2
C1 x 2 Drive shaft ★	351095	9.1
C1 x 2 7/16 Drive shaft ★	351096	12.5
C1 x 3 Drive shaft ★	351097	17.4

Accessories for SCXT1A reducers

Description	NEMA motor frame	Screw dia.	Part no.	Weight
M112 Standard motor mount	56T thru 210T	6"-12"	351069	42
M120L Long motor mount	56T thru 210T	14"-20"	272625	51
SCXT1D SCD Reducer belt guard	56T thru 210T	-	241489	27
SCXT1D SCD Reducer belt guard for long motor mount	56T thru 210T	-	241149	32
SCXT1 Auxiliary seal kit ♥	-	-	272721	2
SCXT1 Lube kit	-	-	LUBEKITTXT1	4.6
Dodge ability sensor			750000	0.5

SCXT1 Motor mount assembly dimensions

Motor mount	E ◆		V-belt drive center distances for various NEMA motor frames					
	Min.	Max.	56, 140		180		210	
	Min.	Max.	Min.	Max.	Min.	Max.	Min.	Max.
M112	11.1	15.3	13.5	17.0	14.5	18.0	15.3	19.0
M120L	17.1	21.3	19.5	22.9	20.5	23.9	21.2	24.7

† For a complete SCXT drive, order a reducer, drive shaft and adapter assembly by their respective part numbers. Drive is shipped unassembled.

◆ AC Adjustable packing kit, with braided seals, is furnished if specified. It bolts to the C adapter.

◆ Provides for V-Belt adjustment.

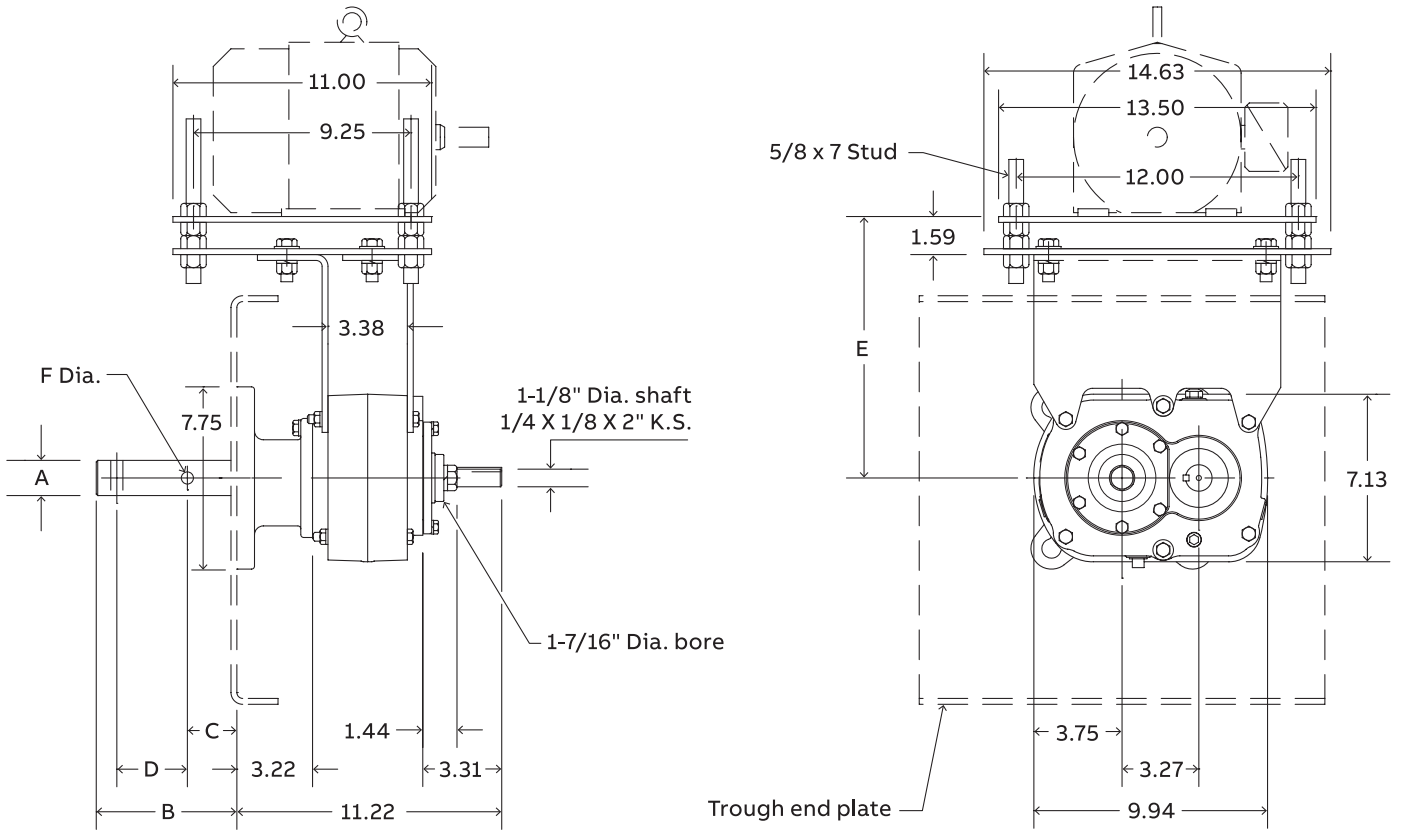
♥ See pages G3-171 and G3-172 for drill and tap information required to mount to reducer.

▲ Includes adapter, necessary mounting bolts, seal retainer and lip type seal. See page G3-116 for adapter bolt pattern details.

★ CEMA drive shaft and key is furnished unless otherwise specified. See pages G3-117 thru G3-119 for optional drive shafts available from Dodge.

Selection and dimensions

Screw conveyor shaft mount speed reducers
 SCXT105 – Single reduction screw conveyor drives



CEMA Drive shafts ★							
Drive shaft	Screw dia.	A	B	C	D	F Dia.	
C1 x 1-1/2	6" - 9"	1.50	6.00	2.13	3.00	.52	
C1 x 2	9" - 12"	2.00	6.00	2.13	3.00	.64	
C1 x 2-7/16	12" - 14"	2.44	6.69	2.75	3.00	.64	
C1 x 3	12" - 20"	3.00	6.88	2.88	3.00	.77	

All dimensions are in inches.

Selection and dimensions

Screw conveyor shaft mount speed reducers
SCXT105 – Single reduction screw conveyor drives

SCXT105 Screw conveyor drives †

Reducers				
Size	Part no.	AGMA code	Ratio	Weight
SCXT105	351165	107S05	5.62	40

Description	Part no.	Weight
C1A Adapter assembly ▲	351086	13
AC1 Adjustable packing kit ♣	356301	0.8
C1 x 1-1/2 Drive shaft ★	351094	7.2
C1 x 2 Drive shaft ★	351095	9.1
C1 x 2 7/16 Drive shaft ★	351096	12.5
C1 x 3 Drive shaft ★	351097	17.4

Accessories for SCXT105 reducers

Description	NEMA motor frame	Screw dia.	Part no.	Weight
M112 Standard motor mount	56T thru 210T	6"-12"	351069	42
M120L Long motor mount	56T thru 210T	14"-20"	272625	51
SCXT15 SCD Reducer belt guard	56T thru 210T	–	241491	30
SCXT15 SCD Reducer belt guard for long motor mount ♣	56T thru 210T	–	241142	36
SCXT105 Auxiliary seal kit ♥ ♣	–	–	251146	2
SCXT105 Lube kit	–	–	LUBEKITXT105	4.5
Dodge ability sensor	–	–	750000	0.5

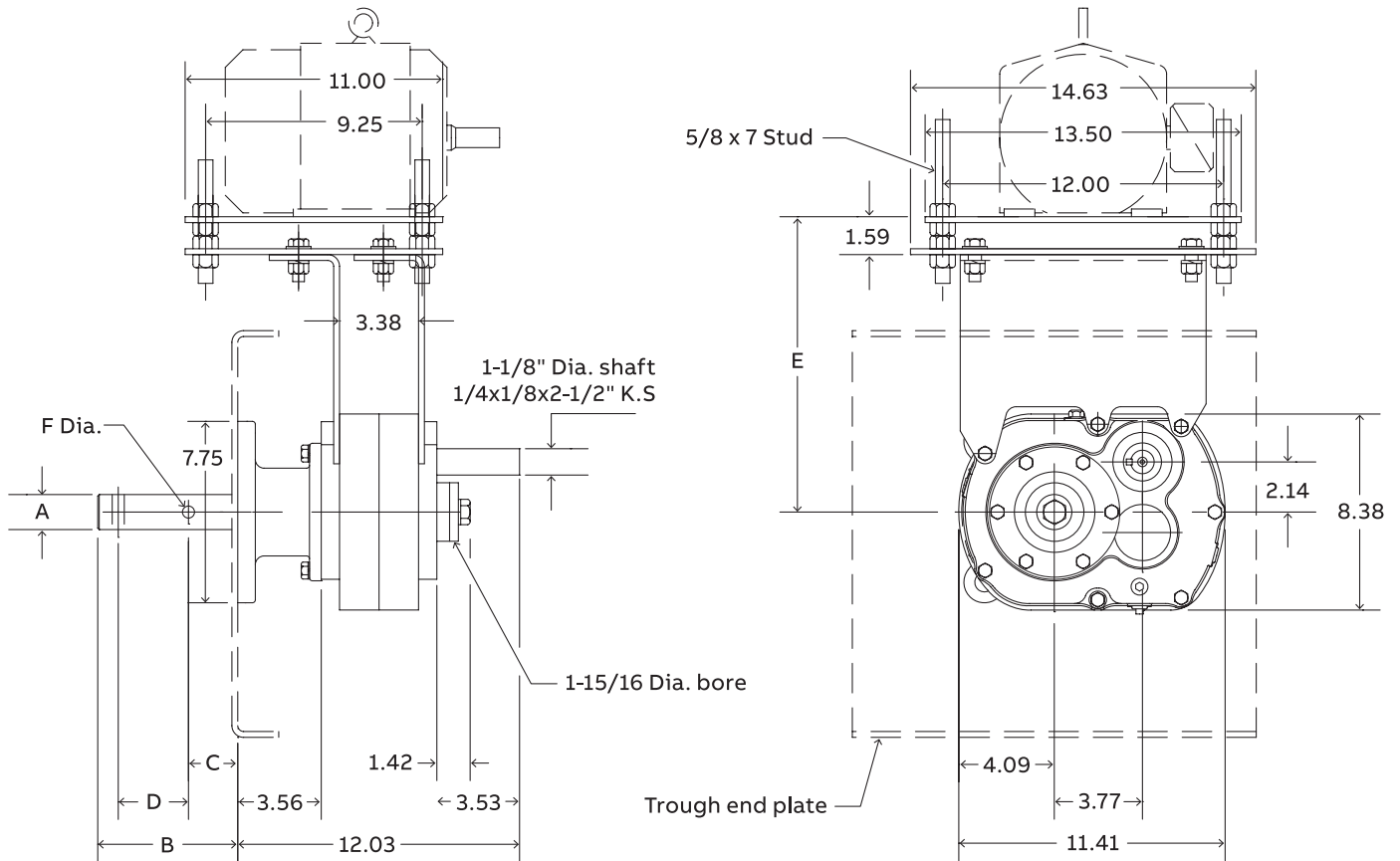
SCXT105 Motor mount assembly dimensions

Motor mount	V-belt drive center distances for various NEMA motor frames							
	E ♦		56, 140		180		210	
	Min.	Max.	Min.	Max.	Min.	Max.	Min.	Max.
M112	11.1	15.3	15.4	19.0	16.4	20.0	17.2	20.6
M120L	17.1	21.3	21.4	24.8	22.4	25.8	23.1	26.6

- † For a complete SCXT drive, order a reducer, drive shaft and adapter assembly by their respective part numbers. Drive is shipped unassembled.
- ♣ AC Adjustable packing kit, with braided seals, is furnished if specified. It bolts to the C adapter.
- ♦ Provides for V-Belt adjustment.
- ♥ See pages G3-171 and G3-172 for drill and tap information required to mount to reducer.
- ▲ Includes adapter, necessary mounting bolts, seal retainer and lip type seal. See page G3-116 for adapter bolt pattern details.
- ★ CEMA drive shaft and key is furnished unless otherwise specified. See pages G3-117 thru G3-119 for optional drive shafts available from Dodge.
- ♣ Made to order.

Selection and dimensions

Screw conveyor shaft mount speed reducers
 SCXT2A – Double reduction screw conveyor drives



CEMA Drive shafts ★

Drive shaft	Screw dia.	A	B	C	D	F Dia.
C2 x 1-1/2	6" - 9"	1.50	6.00	2.13	3.00	.52
C2 x 2	9" - 12"	2.00	6.00	2.13	3.00	.64
C2 x 2-7/16	12" - 14"	2.44	6.69	2.75	3.00	.64
C2 x 3	12" - 20"	3.00	6.88	2.88	3.00	.77

All dimensions are in inches.

Selection and dimensions

Screw conveyor shaft mount speed reducers

SCXT2A – Double reduction screw conveyor drives

SCXT2A Screw conveyor drives †

Reducers				
Size	Part no.	AGMA code	Ratio	Weight
SCXT209A	242480	115D09	9.25	58
SCXT215A	352065	115D15	14.10	58
SCXT225A	352066	115D25	23.46	58

Description	Part no.	Weight
C2A Adapter assembly ▲	352052	15
AC2 Adjustable packing kit ◆	356302	1.2
C2 x 1-1/2 Drive shaft ★	352090	11.4
C2 x 2 Drive shaft ★	352091	13.8
C2 x 2 7/16 Drive shaft ★	352092	17.3
C2 x 3 Drive shaft ★	352093	19

Accessories for SCXT2A reducers

Description	NEMA motor frame	Screw dia.	Part no.	Weight
M214 Standard motor mount	56T thru 210T	6"-14"	352069	43
M220L Long motor mount	56T thru 210T	16"-20"	272626	51
SCXT2D SCD Reducer belt guard	56T thru 210T	-	242489	32
SCXT2D SCD Reducer belt guard for long motor mount	56T thru 210T	-	242223	38
SCXT2 Auxiliary seal kit ♥	-	-	272722	3
SCXT2 Lube kit	-	-	LUBEKITTXT2	4.6
Dodge ability sensor			750000	0.5

SCXT2 Motor mount assembly dimensions

Motor mount	E ◆		V-belt drive center distances for various NEMA motor frames					
	Min.	Max.	56, 140		180		210	
	Min.	Max.	Min.	Max.	Min.	Max.	Min.	Max.
M214	12.6	16.8	14.9	18.3	15.9	19.3	16.6	20.0
M220L	18.6	22.8	20.9	24.2	21.9	25.3	22.6	26.0

† For a complete SCXT drive, order a reducer, drive shaft and adapter assembly by their respective part numbers. Drive is shipped unassembled.

◆ AC Adjustable packing kit, with braided seals, is furnished if specified. It bolts to the C adapter.

◆ Provides for V-Belt adjustment.

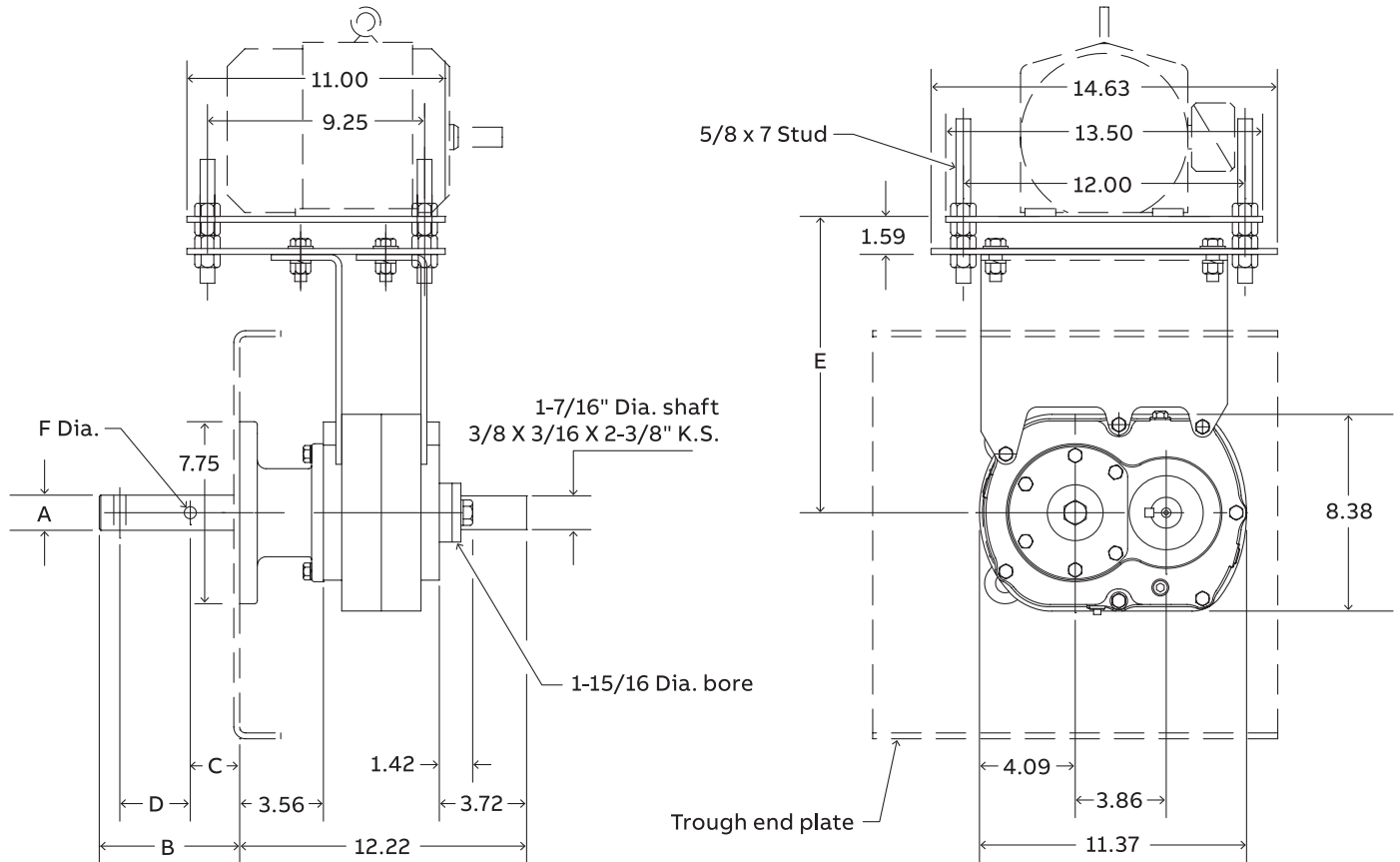
♥ See pages G3-171 and G3-172 for drill and tap information required to mount to reducer.

▲ Includes adapter, necessary mounting bolts, seal retainer and lip type seal. See page G3-116 for adapter bolt pattern details.

★ CEMA drive shaft and key is furnished unless otherwise specified. See pages G3-117 thru G3-119 for optional drive shafts available from Dodge.

Selection and dimensions

Screw conveyor shaft mount speed reducers
 SCXT205 – Single reduction screw conveyor drives



CEMA Drive shafts ★							
Drive shaft	Screw dia.	A	B	C	D	F Dia.	
C2 x 1-1/2	6" - 9"	1.50	6.00	2.13	3.00	.52	
C2 x 2	9" - 12"	2.00	6.00	2.13	3.00	.64	
C2 x 2-7/16	12" - 14"	2.44	6.69	2.75	3.00	.64	
C2 x 3	12" - 20"	3.00	6.88	2.88	3.00	.77	

All dimensions are in inches.

Selection and dimensions

Screw conveyor shaft mount speed reducers
SCXT205 – Single reduction screw conveyor drives

SCXT205 Screw conveyor drives †

Reducers				
Size	Part no.	AGMA code	Ratio	Weight
SCXT205	352218	115S05	5.29	52

Description	Part no.	Weight
C2A Adapter assembly ▲	352052	15
AC2 Adjustable packing kit ♣	356302	1.2
C2 x 1-1/2 Drive shaft ★	352090	11.4
C2 x 2 Drive shaft ★	352091	13.8
C2 x 2 7/16 Drive shaft ★	352092	17.3
C2 x 3 Drive shaft ★	352093	19

Accessories for SCXT205 reducers

Description	NEMA motor frame	Screw dia.	Part no.	Weight
M214 Standard motor mount	56T thru 210T	6"-12"	352069	43
M220L Long motor mount	56T thru 210T	14"-20"	272626	51
SCXT2S SCD Reducer belt guard	56T thru 210T	-	242491	34
SCXT2S SCD Reducer belt guard for long motor mount	56T thru 210T	-	242114	41
SCXT205 Auxiliary seal kit ♥ ♣	-	-	252146	3
SCXT205 Lube kit	-	-	LUBEKITXT205	6.9
Dodge ability sensor	-	-	750000	0.5

SCXT205 Motor mount assembly dimensions

Motor mount	E ♦							
	56, 140				180			
	V-belt drive center distances for various NEMA motor frames		210		210		210	
	Min.	Max.	Min.	Max.	Min.	Max.	Min.	Max.
M214	12.6	16.8	17.0	20.5	18.0	21.4	18.7	22.2
M220L	18.6	22.8	23.0	26.4	24.0	27.5	24.7	28.2

† For a complete SCXT drive, order a reducer, drive shaft and adapter assembly by their respective part numbers. Drive is shipped unassembled.

♣ AC Adjustable packing kit, with braided seals, is furnished if specified. It bolts to the C adapter.

♦ Provides for V-Belt adjustment.

♥ See pages G3-171 and G3-172 for drill and tap information required to mount to reducer.

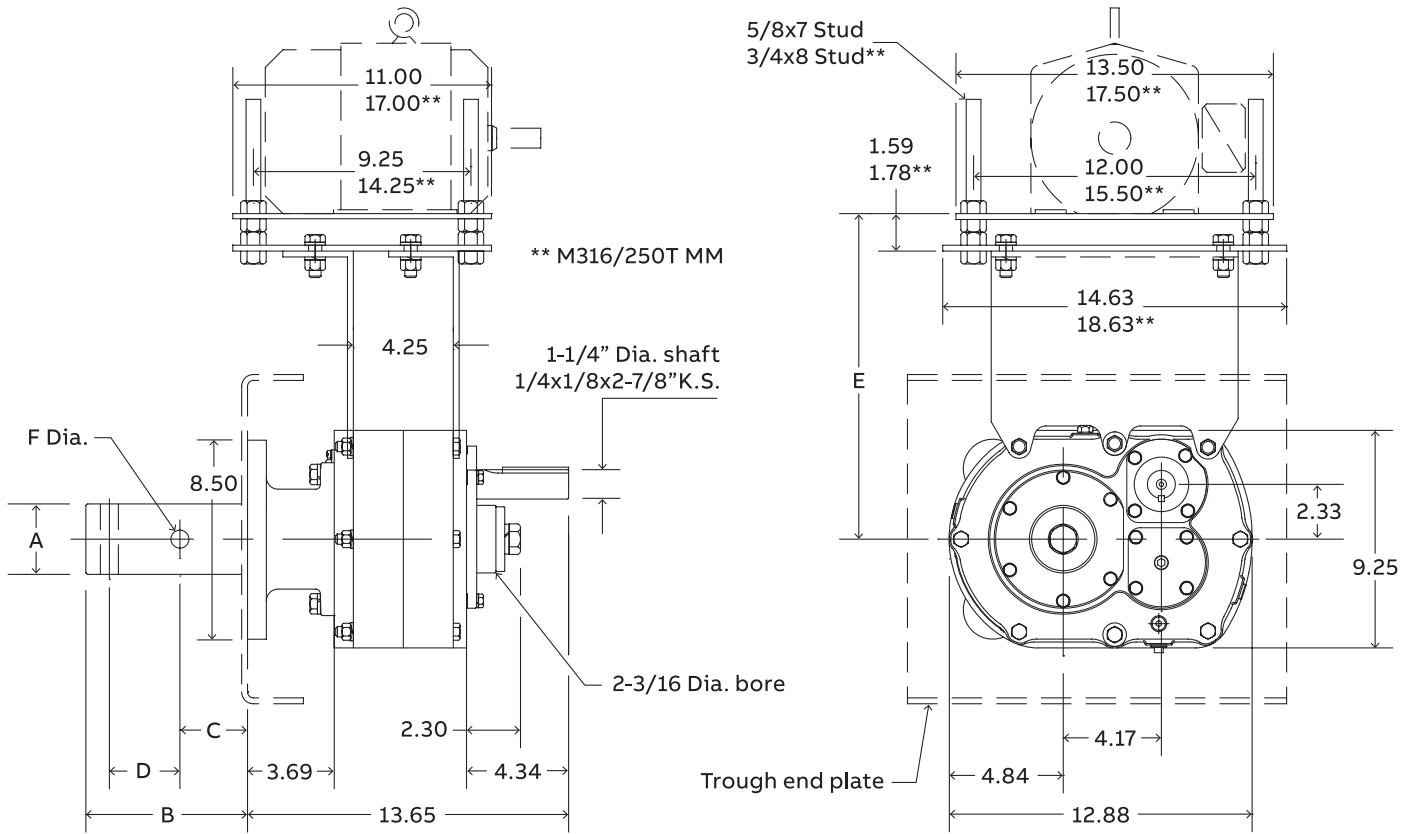
▲ Includes adapter, necessary mounting bolts, seal retainer and lip type seal. See page G3-116 for adapter bolt pattern details.

★ CEMA drive shaft and key is furnished unless otherwise specified. See pages G3-117 thru G3-119 for optional drive shafts available from Dodge.

♣ Made to order.

Selection and dimensions

Screw conveyor shaft mount speed reducers
 SCXT3B – Double reduction screw conveyor drives



CEMA Drive shafts ★						
Drive shaft	Screw dia.	A	B	C	D	F Dia.
C3 x 1-1/2	9"	1.50	6.00	2.13	3.00	.52
C3 x 2	9" - 12"	2.00	6.00	2.13	3.00	.64
C3 x 2-7/16	12" - 14"	2.44	6.69	2.75	3.00	.64
C3 x 3	12" - 20"	3.00	6.88	2.88	3.00	.77

Selection and dimensions

Screw conveyor shaft mount speed reducers
SCXT3B – Double reduction screw conveyor drives

SCXT3B Screw conveyor drives †

Reducers				
Size	Part no.	AGMA code	Ratio	Weight
SCXT309B	243524	203D09	8.91	98
SCXT315B	243525	203D15	14.88	98
SCXT325B	243526	203D25	24.71	98

Description	Part no.	Weight
C3 Adapter assembly ▲	353047	29
AC3 Adjustable packing kit ♣	356303	1.4
C3 x 1-1/2 Drive shaft ★	243562	15
C3 x 2 Drive shaft ★	243563	16
C3 x 2 7/16 Drive shaft ★	243564	19.5
C3 x 3 Drive shaft ★	243565	26

Accessories for SCXT3B reducers

Description	NEMA motor frame	Screw dia.	Part no.	Weight
M316 Standard motor mount	56T thru 210T	6"-16"	353069	44
M316/250T Special motor mount ■ ●	250T	6"-16"	353070	44
M320L Long motor mount	56T thru 210T	18"-20"	272627	56
SCXT3-D SCD Reducer belt guard	56T thru 210T	-	243416	40
SCXT3-D SCD Reducer belt guard for long motor mount	56T thru 210T	-	243154	48
SCXT3A Cooling fan assembly	-	-	243581	3
SCXT3A Auxiliary seal kit	-	-	243582	5
SCXT3 Lube kit	-	-	LUBEKITXT3	6.9
Dodge ability sensor	-	-	750000	0.5

SCXT3 Motor mount assembly dimensions

Motor mount	E ◆		V-belt drive center distances for various NEMA motor frames							
	Min.	Max.	56, 140		180		210		250	
	Min.	Max.	Min.	Max.	Min.	Max.	Min.	Max.	Min.	Max.
M316	13.8	18.0	15.8	19.3	16.8	20.3	17.6	21.0	18.6	22.0
M320L	19.8	24.0	21.8	25.3	22.8	26.3	23.6	27.0	-	-

† For a complete SCXT drive, order a reducer, drive shaft and adapter assembly by their respective part numbers. Drive is shipped unassembled.

♣ AC Adjustable packing kit, with braided seals, is furnished if specified. It bolts to the C adapter.

◆ Provides for V-Belt adjustment.

● Drawing dimensions are noted as **.

▲ Includes adapter, necessary mounting bolts, seal retainer and lip type seal. See page G3-116 for adapter bolt pattern details.

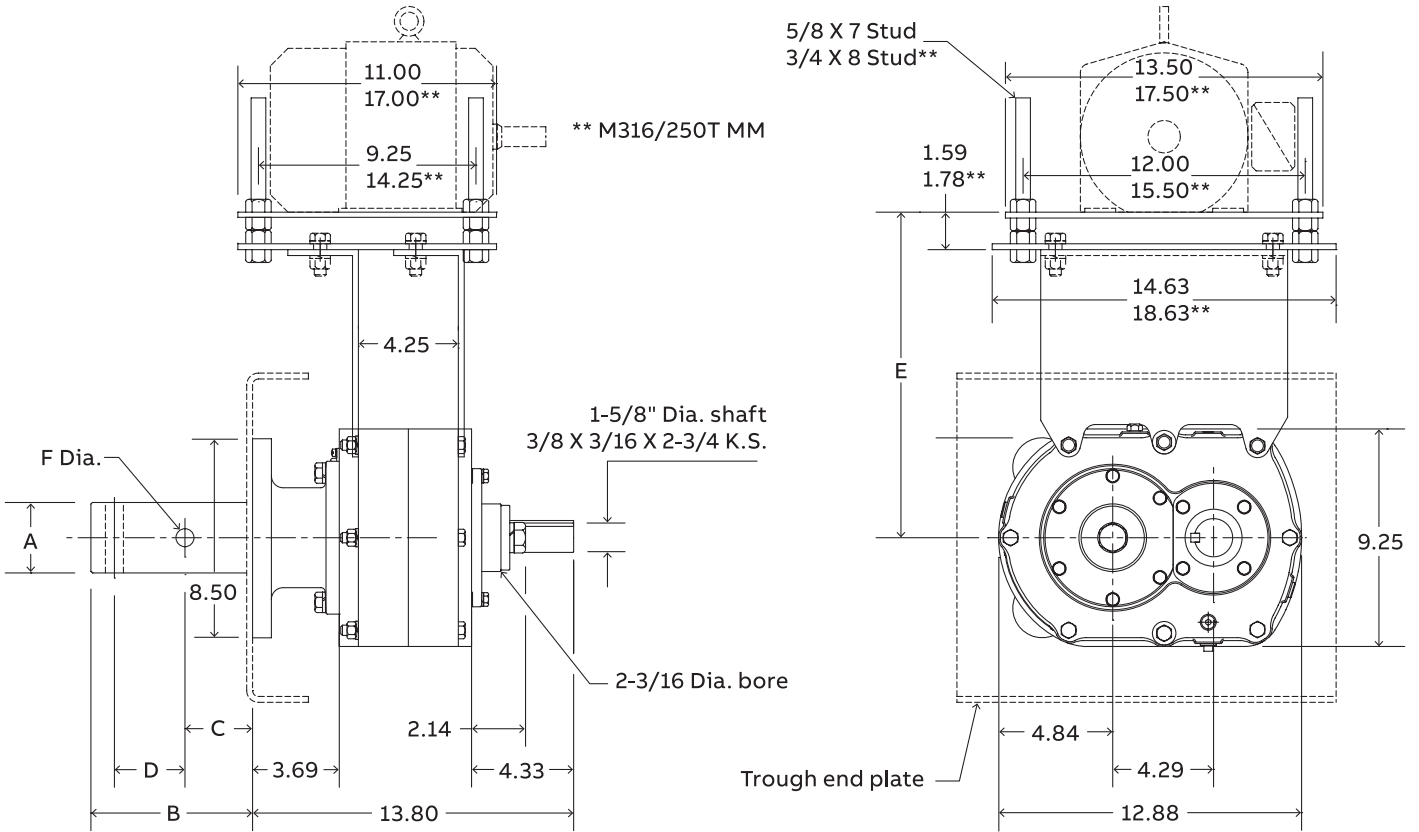
★ CEMA drive shaft and key is furnished unless otherwise specified. See pages G3-117 thru G3-119 for optional drive shafts available from Dodge.

■ Dodge standard belt guards will not fit with this motor mount.

♣ Made to order.

Selection and dimensions

Screw conveyor shaft mount speed reducers
 SCXT305A – Single reduction screw conveyor drives



CEMA Drive shafts ★						
Drive shaft	Screw dia.	A	B	C	D	F Dia.
C3 x 1-1/2	9"	1.50	6.00	2.13	3.00	.52
C3 x 2	9" - 12"	2.00	6.00	2.13	3.00	.64
C3 x 2-7/16	12" - 14"	2.44	6.69	2.75	3.00	.64
C3 x 3	12" - 20"	3.00	6.88	2.88	3.00	.77

All dimensions are in inches.

Selection and dimensions

Screw conveyor shaft mount speed reducers
SCXT305A – Single reduction screw conveyor drives

SCXT305 Screw conveyor drives †

Reducers				
Size	Part no.	AGMA code	Ratio	Weight
SCXT305A	253159	203S05	5.60	86

Description	Part no.	Weight
C3 Adapter assembly ▲	353047	29
AC3 Adjustable packing kit ♣	356303	1.4
C3 x 1-1/2 Drive shaft ★	243562	15
C3 x 2 Drive shaft ★	243563	16
C3 x 2 7/16 Drive shaft ★	243564	19.5
C3 x 3 Drive shaft ★	243565	26

Driveshafts listed are compatible with SCXT3A and SCXT3B revisions only.
For driveshafts compatible with older generations, please consult the Renewal Parts manual.

Accessories for SCXT305A reducers

Description	NEMA motor frame	Screw dia.	Part no.	Weight
M316 Standard motor mount	56T thru 210T	6"-16"	353069	44
M316/250T Special motor mount ■ ● ♣	250T	6"-16"	353070	44
M320L Long motor mount	56T thru 210T	18"-20"	272627	56
SCXT3S SCD Reducer belt guard	56T thru 210T	-	243418	40
SCXT3S SCD Reducer belt guard for long motor mount	56T thru 210T	-	243167	48
SCXT305A Cooling fan assembly	-	-	253188	3
SCXT305A Auxiliary seal kit ♣	-	-	253146	5
SCXT305 Lube kit	-	-	LUBEKITXT305	8.1
Dodge ability sensor	-	-	750000	0.5

SCXT305 Motor mount assembly dimensions

Motor mount	E ◆		V-belt drive center distances for various NEMA motor frames							
	Min.	Max.	56, 140		180		210		250	
	Min.	Max.	Min.	Max.	Min.	Max.	Min.	Max.	Min.	Max.
M316	13.8	18.0	18.2	21.6	19.2	22.6	19.5	23.4	20.9	24.4
M320L	19.8	24.0	24.2	27.6	25.2	28.6	25.9	29.4	-	-

† For a complete SCXT drive, order a reducer, drive shaft and adapter assembly by their respective part numbers. Drive is shipped unassembled.

♣ AC Adjustable packing kit, with braided seals, is furnished if specified. It bolts to the C adapter.

◆ Provides for V-Belt adjustment.

● Drawing dimensions are noted as **.

▲ Includes adapter, necessary mounting bolts, seal retainer and lip type seal. See page G3-116 for adapter bolt pattern details.

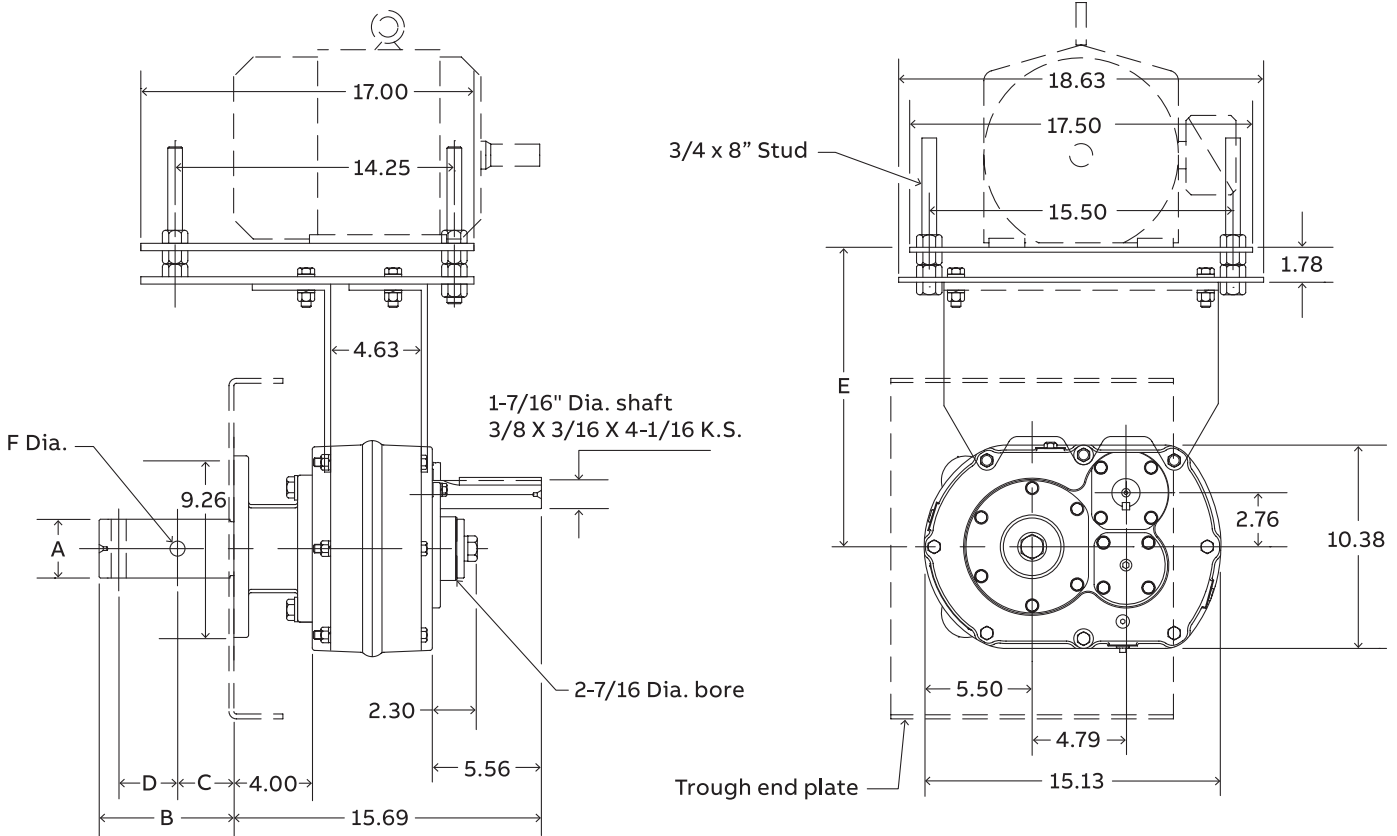
★ CEMA drive shaft and key is furnished unless otherwise specified. See pages G3-117 thru G3-119 for optional drive shafts available from Dodge.

■ Dodge standard belt guards will not fit with this motor mount.

♣ Made to order.

Selection and dimensions

Screw conveyor shaft mount speed reducers
 SCXT4B – Double reduction screw conveyor drives



CEMA Drive shafts ★						
Drive shaft	Screw dia.	A	B	C	D	F Dia.
C4 x 1-1/2	9"	1.50	6.00	2.13	3.00	.52
C4 x 2	9" - 12"	2.00	6.00	2.13	3.00	.64
C4 x 2-7/16	12" - 14"	2.44	6.69	2.75	3.00	.64
C4 x 3	12" - 20"	3.00	6.88	2.88	3.00	.77
C4 x 3-7/16	18" - 24"	3.44	9.13	3.88	4.00	.89

All dimensions are in inches.

Selection and dimensions

Screw conveyor shaft mount speed reducers
SCXT4B – Double reduction screw conveyor drives

SCXT4B Screw conveyor drives †

Reducers				
Size	Part no.	AGMA code	Ratio	Weight
SCXT409B	244549	207D09	9.67	139
SCXT415B	244550	207D15	15.13	139
SCXT425B	244551	207D25	24.38	139

Description	Part no.	Weight
C4 Adapter assembly ▲	354121	33
AC4 Adjustable packing kit ♣	356304	2.1
C4 x 1-1/2 Drive shaft ★	244594	19
C4 x 2 Drive shaft ★	244595	20.80
C4 x 2 7/16 Drive shaft ★	244596	24.30
C4 x 3 Drive shaft ★	244597	29.20
C4 x 3-7/16 Drive shaft ★	244598	39.30

Driveshafts listed are compatible with SCXT4A and SCXT4B revisions only.
For driveshafts compatible with older generations, please consult the Renewal Parts manual.

Accessories for SCXT4B reducers

Description	NEMA motor frame	Screw dia.	Part no.	Weight
M418 Standard motor mount	140T thru 280T	9"-18"	354069	86
M418/320T Specialmotor mount ■ ♣	320T	9"-18"	354028	90
M424L Long motor mount	140T thru 280T	20"-24"	272628	100
SCXT4D SCD Reducer belt guard	140T thru 280T	-	244489	44
SCXT4D SCD Reducer belt guard for long motor mount	140T thru 280T	-	244152	53
SCXT4A Cooling fan assembly	-	-	272594	3
SCXT4A Auxiliary seal kit	-	-	244677	5
SCXT4 Lube kit	-	-	LUBEKITTXT4	10.4
Dodge ability sensor	-	-	750000	0.5

SCXT4 Motor mount assembly dimensions

Motor mount	V-belt drive center distances for various NEMA motor frames													
	E ◆		56, 140		180		210		250		280		320	
	Min.	Max.	Min.	Max.	Min.	Max.	Min.	Max.	Min.	Max.	Min.	Max.	Min.	Max.
M418	15.3	20.1	16.9	21.0	17.9	22.0	18.6	22.7	19.6	23.7	20.4	24.5	21.4	25.4
M424L	21.3	26.1	23.2	27.0	24.2	28.0	24.9	28.6	25.9	29.6	26.7	30.4	-	-

- † For a complete SCXT drive, order a reducer, drive shaft and adapter assembly by their respective part numbers. Drive is shipped unassembled.
 ♣ AC Adjustable packing kit, with braided seals, is furnished if specified. It bolts to the C adapter.
 ◆ Provides for V-Belt adjustment.
 ▲ Includes adapter, necessary mounting bolts, seal retainer and lip type seal. See page G3-116 for adapter bolt pattern details.
 ★ CEMA drive shaft and key is furnished unless otherwise specified. See pages G3-117 thru G3-119 for optional drive shafts available from Dodge.
 ■ Dodge standard belt guards will not fit with this motor mount.
 ♣ Made to order.

Selection and dimensions

Screw conveyor shaft mount speed reducers

SCXT405A – Single reduction screw conveyor drives

SCXT405A Screw conveyor drives †

Reducers				
Size	Part no.	AGMA code	Ratio	Weight
SCXT405A	254208	207S05	5.65	122

Description	Part no.	Weight
C4 Adapter assembly ▲	354121	33
AC4 Adjustable packing kit ♣	356304	2.1
C4 x 1-1/2 Drive shaft ★	244594	19
C4 x 2 Drive shaft ★	244595	20.80
C4 x 2 7/16 Drive shaft ★	244596	24.30
C4 x 3 Drive shaft ★	244597	29.20
C4 x 3-7/16 Drive shaft ★	244598	39.30

Driveshafts listed are compatible with SCXT3A and SCXT3B revisions only.
For driveshafts compatible with older generations, please consult the Renewal Parts manual.

Accessories for SCXT405A reducers

Description	NEMA motor frame	Screw dia.	Part no.	Weight
M418 Standard motor mount	140T thru 280T	9"-18"	354069	86
M418/320T Special motor mount ■ ♣	320T	9"-18"	354028	90
M424L Long motor mount	140T thru 280T	20"-24"	272628	100
SCXT45 SCD Reducer belt guard	140T thru 280T	-	244491	50
SCXT45 SCD Reducer belt guard for long motor mount ♣	140T thru 280T	-	244167	60
SCXT405A Cooling fan assembly	-	-	254268	3
SCXT405A Auxiliary seal kit ♣	-	-	254146	5
SCXT405 Lube kit	-	-	LUBEKITXT405	12.7
Dodge ability sensor	-	-	750000	0.5

SCXT405 Motor mount assembly dimensions

Motor mount	V-belt drive center distances for various NEMA motor frames													
	E ◆		56, 140		180		210		250		280		320	
	Min.	Max.	Min.	Max.	Min.	Max.	Min.	Max.	Min.	Max.	Min.	Max.	Min.	Max.
M418	15.3	20.1	19.6	23.7	20.6	24.7	21.4	25.5	22.4	26.5	23	27.2	21.4	25.4
M424L	21.3	26.1	25.9	29.7	26.9	30.7	27.7	31.4	28.7	32.3	29.4	33.2	-	-

† For a complete SCXT drive, order a reducer, drive shaft and adapter assembly by their respective part numbers. Drive is shipped unassembled.

♣ AC Adjustable packing kit, with braided seals, is furnished if specified. It bolts to the C adapter.

◆ Provides for V-Belt adjustment.

▲ Includes adapter, necessary mounting bolts, seal retainer and lip type seal. See page G3-116 for adapter bolt pattern details.

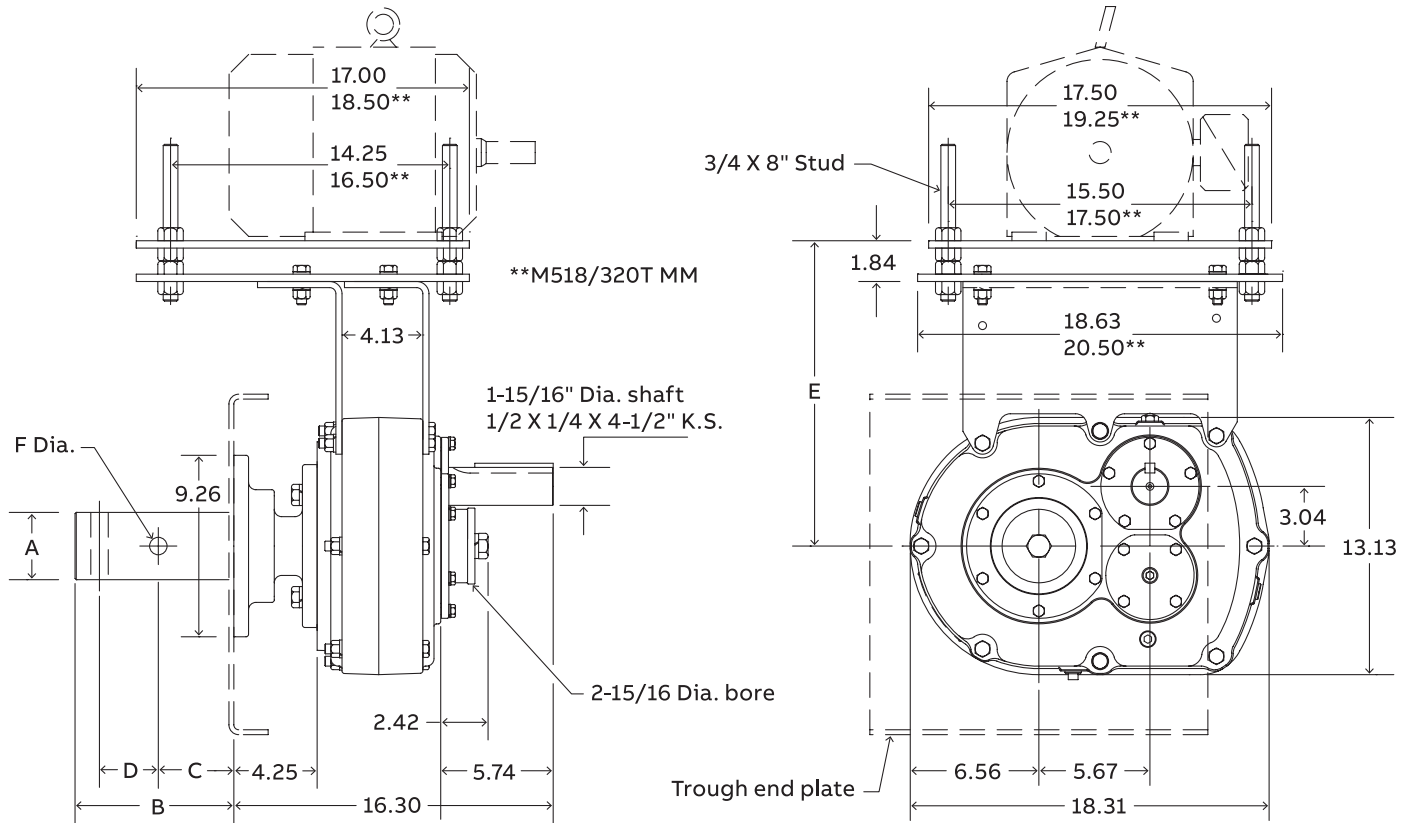
★ CEMA drive shaft and key is furnished unless otherwise specified. See pages G3-117 thru G3-119 for optional drive shafts available from Dodge.

■ Dodge standard belt guards will not fit with this motor mount.

♣ Made to order.

Selection and dimensions

Screw conveyor shaft mount speed reducers
 SCXT5C – Double reduction screw conveyor drives



CEMA Drive shafts ★						
Drive shaft	Screw dia.	A	B	C	D	F Dia.
C5B x 2	9" - 12"	2.00	6.00	2.13	3.00	.64
C5B x 2-7/16	12" - 14"	2.44	6.69	2.75	3.00	.64
C5B x 3	12" - 20"	3.00	6.88	2.88	3.00	.77
C5B x 3-7/16	18" - 24"	3.44	9.13	3.88	4.00	.89

All dimensions are in inches.

Selection and dimensions

Screw conveyor shaft mount speed reducers
SCXT5C – Double reduction screw conveyor drives

SCXT5C Screw conveyor drives †

Reducers				
Size	Part no.	AGMA code	Ratio	Weight
SCXT509C	245574 ♣	215D09	8.95	207
SCXT515C	245575	215D15	15.40	207
SCXT525C	245576	215D25	25.56	207

Description	Part no.	Weight
C5 Adapter assembly ▲	355072	43
AC5 Adjustable packing kit ♣	356305	2.1
C5B x 2 Drive shaft ★	355175	29.4
C5B x 2 7/16 Drive shaft ★	355176	33
C5B x 3 Drive shaft ★	355177	37.9
C5B x 3-7/16 Drive shaft ★	355178	48.3

Driveshafts listed are compatible with SCXT5B and SCXT5C revisions only.

For driveshafts compatible with older generations, please consult the Renewal Parts manual.

Accessories for SCXT5C reducers

Description	NEMA motor frame	Screw dia.	Part no.	Weight
M518 Standard motor mount	140T thru 280T	9"-18"	355169	82
M518/320T Special motor mount ●■♣	320T	9"-18"	355168	82
M524L Long motor mount	140T thru 280T	20"-24"	272629	110
SCXT5D SCD Reducer belt guard	140T thru 280T	–	245495	45
SCXT5D SCD Reducer belt guard for long motor mount	140T thru 280T	–	245103	54
SCXT5B Cooling fan assembly	–	–	272369	3
SCXT5B Auxiliary seal kit	–	–	245637	6
SCXT5 Lube kit	–	–	LUBEKITXT5	18.5
Dodge ability sensor	–	–	750000	0.5

SCXT5C Motor mount assembly dimensions

Motor mount	E ◆		V-belt drive center distances for various NEMA motor frames											
	Min.	Max.	56, 140		180		210		250		280		320	
			Min.	Max.	Min.	Max.	Min.	Max.	Min.	Max.	Min.	Max.	Min.	Max.
M518	15.3	20.1	16.6	20.7	17.6	21.7	18.4	22.4	19.4	23.4	20	24.2	21.1	25.2
M524L	21.3	26.1	22.9	26.6	23.9	27.6	24.7	28.4	25.7	29.4	26.4	30.1	–	–

† For a complete SCXT drive, order a reducer, drive shaft and adapter assembly by their respective part numbers. Drive is shipped unassembled.

♣ AC Adjustable packing kit, with braided seals, is furnished if specified. It bolts to the C adapter.

◆ Provides for V-Belt adjustment.

▲ Includes adapter, necessary mounting bolts, seal retainer and lip type seal. See page G3-116 for adapter bolt pattern details.

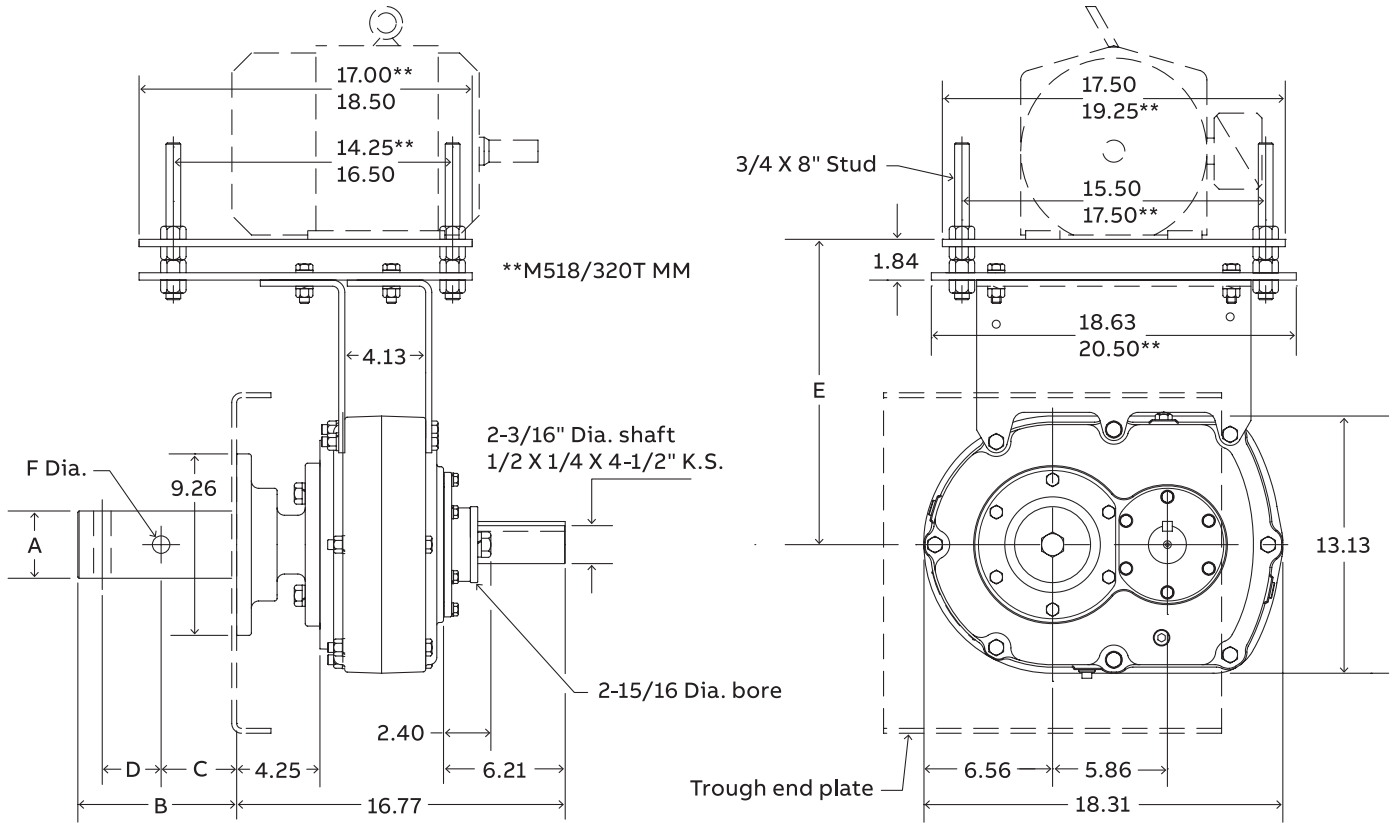
★ CEMA drive shaft and key is furnished unless otherwise specified. See pages G3-117 thru G3-119 for optional drive shafts available from Dodge.

■ Dodge standard belt guards will not fit with this motor mount.

♣ Made to order.

Selection and dimensions

Screw conveyor shaft mount speed reducers
 SCXT505A – Single reduction screw conveyor drives



CEMA Drive shafts ★

Drive shaft	Screw dia.	A	B	C	D	F Dia.
C5B x 2	9" - 12"	2.00	6.00	2.13	3.00	.64
C5B x 2-7/16	12" - 14"	2.44	6.69	2.75	3.00	.64
C5B x 3	12" - 20"	3.00	6.88	2.88	3.00	.77
C5B x 3-7/16	18" - 24"	3.44	9.13	3.88	4.00	.89

All dimensions are in inches.

Selection and dimensions

Screw conveyor shaft mount speed reducers

SCXT505A – Single reduction screw conveyor drives

SCXT505A Screw conveyor drives †

Reducers				
Size	Part no.	AGMA code	Ratio	Weight
SCXT505A	255208	215S05	5.67	182

Description	Part no.	Weight
C5 Adapter assembly ▲	355072	43
AC5 Adjustable packing kit ♣	356305	2.1
C5B x 2 Drive shaft ★	355175	29.4
C5B x 2 7/16 Drive shaft ★	355176	33
C5B x 3 Drive shaft ★	355177	37.9
C5B x 3-7/16 Drive shaft ★	355178	48.3

Driveshafts listed are compatible with SCXT3A and SCXT3B revisions only.

For driveshafts compatible with older generations, please consult the Renewal Parts manual.

Accessories for SCXT505A reducers

Description	NEMA motor frame	Screw dia.	Part no.	Weight
M518 Standard motor mount	140T thru 280T	9"-18"	355169	82
M518/320T Special motor mount ●■♣	320T	9"-18"	355168	82
M524L Long motor mount	140T thru 280T	20"-24"	272629	110
SCXT5S SCD Reducer belt guard	140T thru 280T	–	245497	70
SCXT5S SCD Reducer belt guard for long motor mount ♣	140T thru 280T	–	245015	84
SCXT505A Cooling fan assembly	–	–	255231	3
SCXT505A Auxiliary seal kit ♣	–	–	255148	6
SCXT505 Lube kit	–	–	LUBEKITXT505	18.5
Dodge ability sensor	–	–	750000	0.5

SCXT505A Motor mount assembly dimensions

Motor mount	V-belt drive center distances for various NEMA motor frames													
	E ◆		56, 140		180		210		250		280		320	
	Min.	Max.	Min.	Max.	Min.	Max.	Min.	Max.	Min.	Max.	Min.	Max.	Min.	Max.
M518	15.3	20.1	19.7	23.8	20.7	24.7	21.4	25.5	22.4	26.5	23	27.2	24.2	28.2
M524L	21.3	26.1	25.9	29.7	26.9	30.7	27.7	31.4	28.7	32.4	29.5	33.2	–	–

† For a complete SCXT drive, order a reducer, drive shaft and adapter assembly by their respective part numbers. Drive is shipped unassembled.

♣ AC Adjustable packing kit, with braided seals, is furnished if specified. It bolts to the C adapter.

◆ Provides for V-Belt adjustment.

● Drawing dimensions are noted as **.

▲ Includes adapter, necessary mounting bolts, seal retainer and lip type seal. See page G3-116 for adapter bolt pattern details.

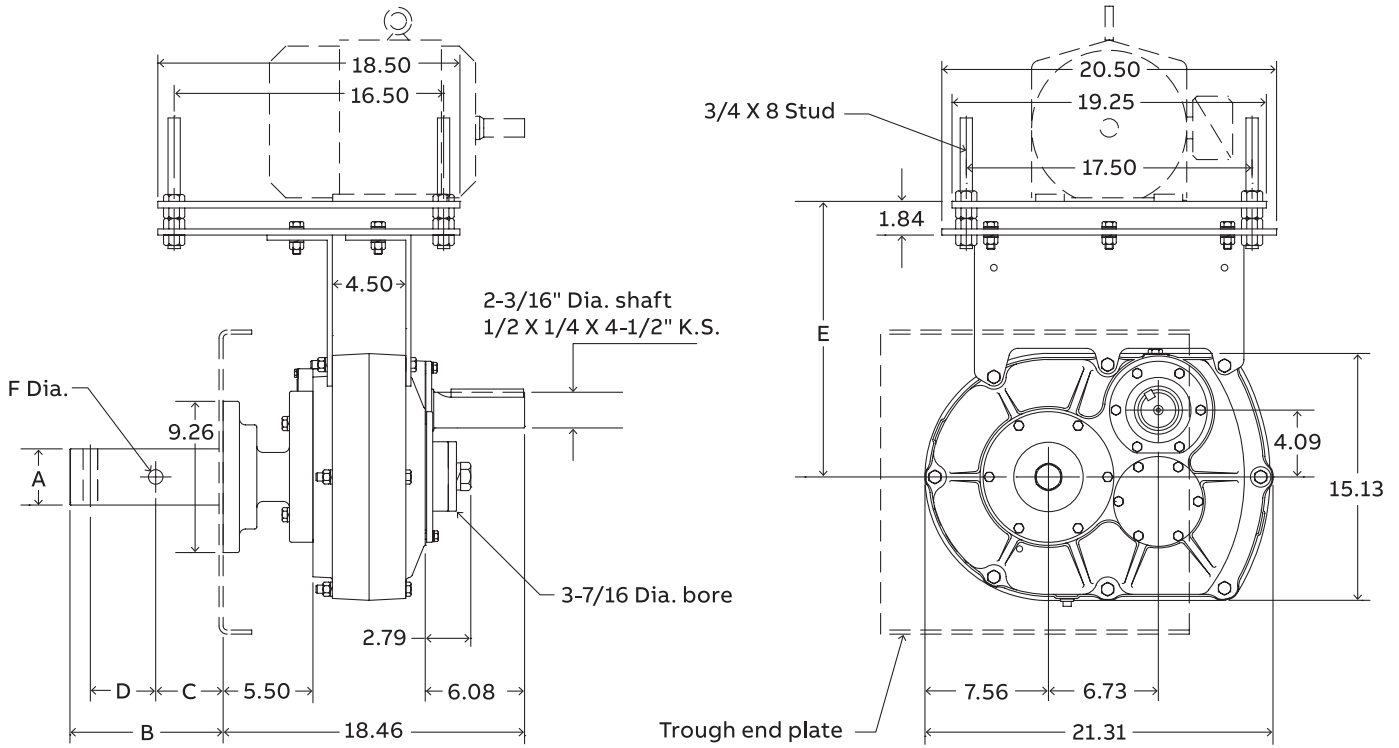
★ CEMA drive shaft and key is furnished unless otherwise specified. See pages G3-117 thru G3-119 for optional drive shafts available from Dodge.

■ Dodge standard belt guards will not fit with this motor mount.

♣ Made to order.

Selection and dimensions

Screw conveyor shaft mount speed reducers
 SCXT6A – Double reduction screw conveyor drives



CEMA Drive shafts ★

Drive shaft	Screw dia.	A	B	C	D	F Dia.
C6 x 2-7/16	12" - 14"	2.44	6.69	2.75	3.00	.64
C6 x 3	12" - 20"	3.00	6.88	2.88	3.00	.77
C6 x 3-7/16	18" - 24"	3.44	9.13	3.88	4.00	.89

All dimensions are in inches.

Selection and dimensions

Screw conveyor shaft mount speed reducers
SCXT6A – Double reduction screw conveyor drives

SCXT6A Screw conveyor drives †

Reducers				
Size	Part no.	AGMA code	Ratio	Weight
SCXT609A	246480 ♣	307D09	9.20	285
SCXT615A	356057	307D15	15.33	285
SCXT625A	356058	307D25	25.13	285

Description	Part no.	Weight
C6 Adapter Assembly ▲	356055	56
AC6/AC7 Adjustable Packing Kit ♣	356306	2.4
C6 x 2 7/16 Drive Shaft ★	356042	47.7
C6 x 3 Drive Shaft ★	356043	52.7
C6 x 3-7/16 Drive Shaft ★	356044	63

Accessories for SCXT6A reducers

Description	NEMA motor frame	Screw dia.	Part no.	Weight
M620 Standard Motor Mount	140T thru 320T	12"-20"	356069	105
M624L Long Motor Mount ♣	140T thru 320T	24"	272630	122
SCXT6D SCD Reducer Belt Guard	140T thru 320T	–	246476	60
SCXT6D SCD Reducer Belt Guard for Long Motor Mount	140T thru 320T	–	246148	72
SCXT6 Cooling Fan Assembly	–	–	272325	3
SCXT6 Auxiliary Seal Kit	–	–	272726	7
SCXT6 Lube Kit	–	–	LUBEKITXT6	20.8
Dodge ability sensor			750000	0.5

SCXT6A Motor mount assembly dimensions

Motor mount	E ♦		V-belt drive center distances for various NEMA motor frames											
			56, 140		180		210		250		280		320	
	Min.	Max.	Min.	Max.	Min.	Max.	Min.	Max.	Min.	Max.	Min.	Max.	Min.	Max.
M620	16.7	21.4	17.0	21.0	18.0	22.0	18.8	22.8	19.7	23.8	20.5	24.5	21.5	25.5
M624L	22.7	27.4	23.2	27.0	24.2	27.9	27.9	28.7	25.9	29.7	26.7	30.5	27.6	31.4

† For a complete SCXT drive, order a reducer, drive shaft and adapter assembly by their respective part numbers. Drive is shipped unassembled.

♣ AC Adjustable packing kit, with braided seals, is furnished if specified. It bolts to the C adapter.

♦ Provides for V-Belt adjustment.

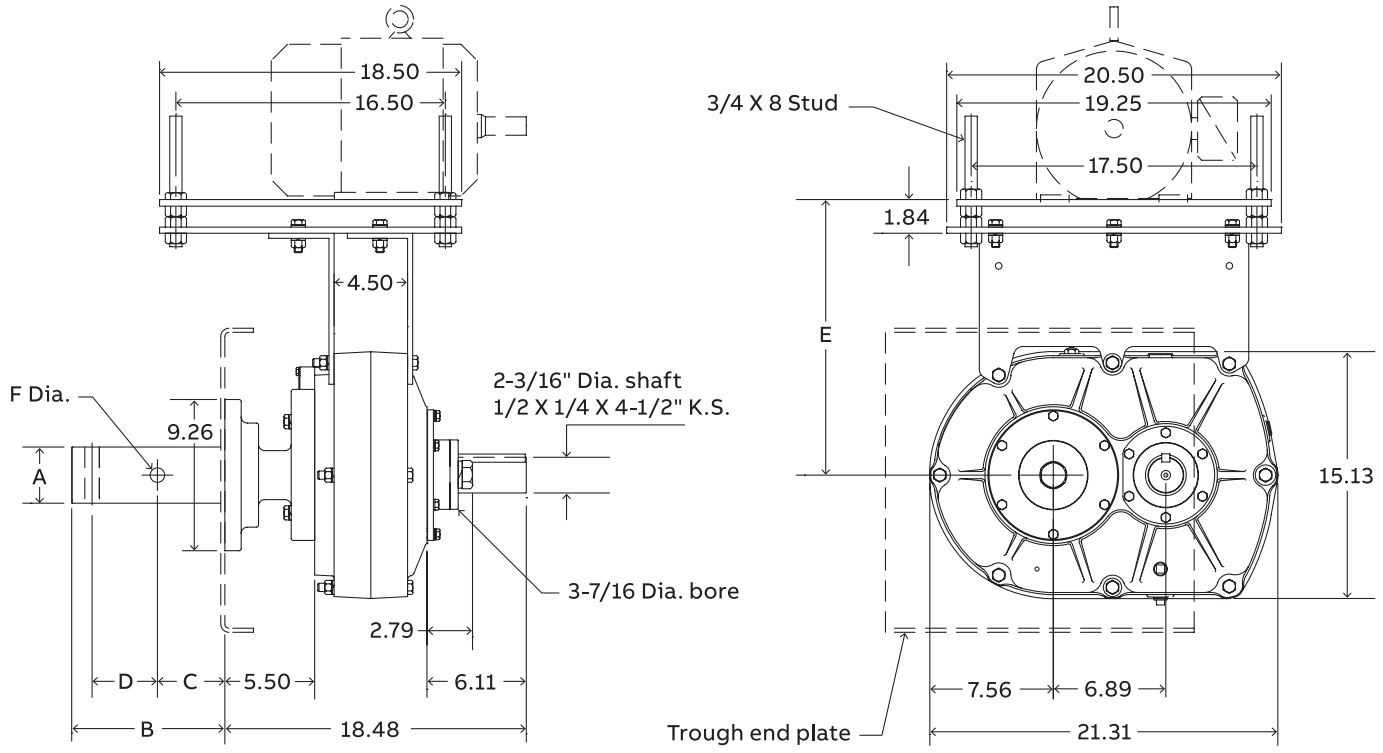
▲ Includes adapter, necessary mounting bolts, seal retainer and lip type seal. See page G3-116 for adapter bolt pattern details.

★ CEMA drive shaft and key is furnished unless otherwise specified. See pages G3-117 thru G3-119 for optional drive shafts available from Dodge.

♣ Made to order.

Selection and dimensions

Screw conveyor shaft mount speed reducers
 SCXT605 – Single reduction screw conveyor drives



CEMA Drive shafts ★						
Drive shaft	Screw dia.	A	B	C	D	F Dia.
C6 x 2-7/16	12" - 14"	2.44	6.69	2.75	3.00	.64
C6 x 3	12" - 20"	3.00	6.88	2.88	3.00	.77
C6 x 3-7/16	18" - 24"	3.44	9.13	3.88	4.00	.89

All dimensions are in inches.

Selection and dimensions

Screw conveyor shaft mount speed reducers
SCXT605 – Single reduction screw conveyor drives

SCXT605 Screw conveyor drives †

Reducers				
Size	Part no.	AGMA code	Ratio	Weight
SCXT605	356285	307S05	5.67	251

Description	Part no.	Weight
C6 Adapter Assembly ▲	356055	56
AC6/AC7 Adjustable Packing Kit ♣	356306	2.4
C6 x 2 7/16 Drive Shaft ★	356042	47.7
C6 x 3 Drive Shaft ★	356043	52.7
C6 x 3-7/16 Drive Shaft ★	356044	63

Accessories for SCXT605 reducers

Description	NEMA motor frame	Screw dia.	Part no.	Weight
M620 Standard motor mount	140T thru 320T	12"-20"	356069	105
M624L Long motor mount ♣	140T thru 320T	24"	272630	122
SCXT6S SCD Reducer belt guard	140T thru 320T	-	246478	77
SCXT6S SCD Reducer belt Guard for long motor mount ♣	140T thru 320T	-	246142	92
SCXT605 Cooling fan assembly ♣	-	-	272681	3
SCXT6 Auxiliary seal kit	-	-	272726	7
SCXT605 Lube kit	-	-	LUBEKITXT605	24.3
Dodge ability sensor	-	-	750000	0.5

SCXT605 Motor mount assembly dimensions

Motor mount	V-belt drive center distances for various NEMA motor frames													
	E ◆		56, 140		180		210		250		280		320	
	Min.	Max.	Min.	Max.	Min.	Max.	Min.	Max.	Min.	Max.	Min.	Max.	Min.	Max.
M620	16.7	21.4	21.1	25.1	22.1	26.1	22.8	26.8	23.8	27.9	24.6	28.6	25.6	29.6
M624L	22.7	27.4	27.2	31.1	28.2	32.1	29	32.8	30	33.8	30.7	34.6	31.7	35.5

† For a complete SCXT drive, order a reducer, drive shaft and adapter assembly by their respective part numbers. Drive is shipped unassembled.

♣ AC Adjustable packing kit, with braided seals, is furnished if specified. It bolts to the C adapter.

◆ Provides for V-Belt adjustment.

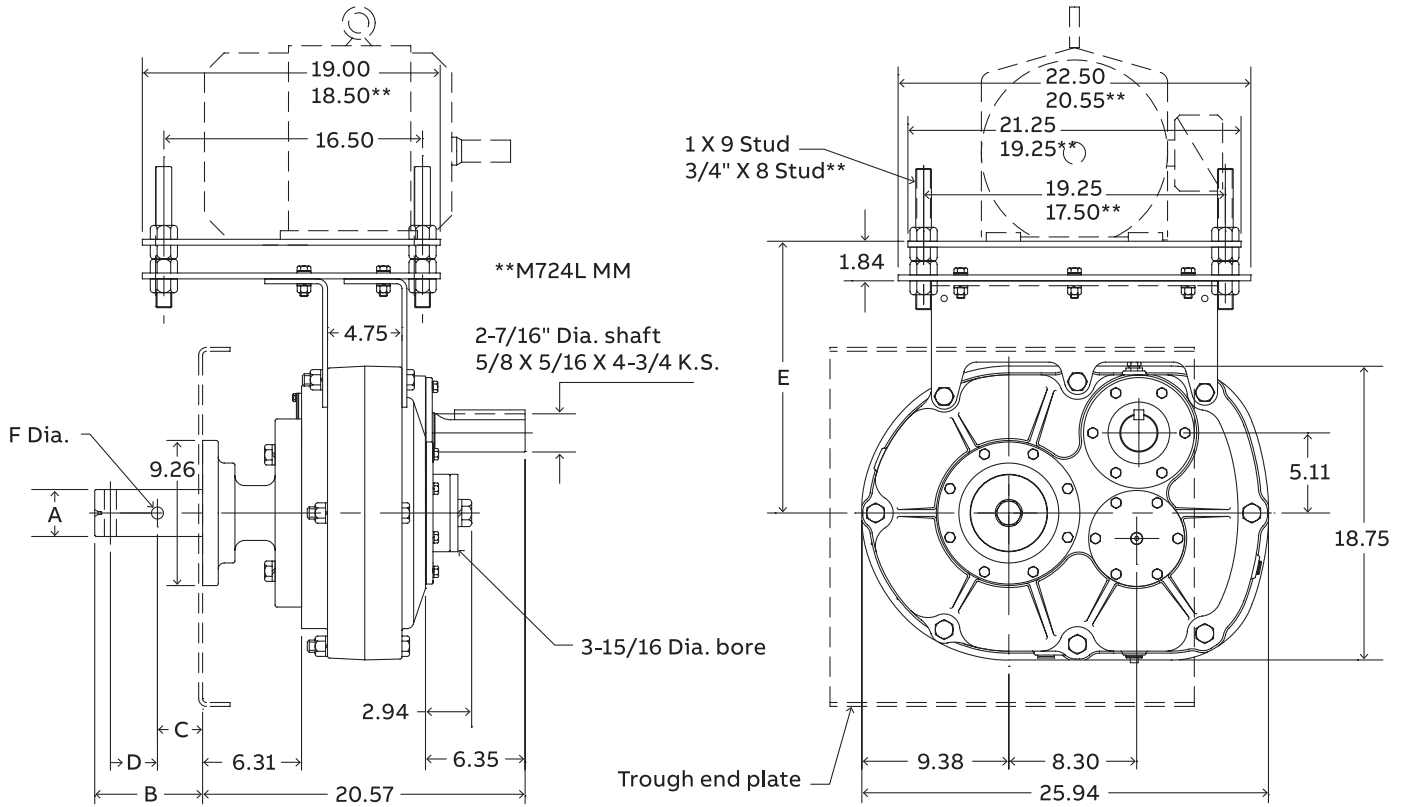
▲ Includes adapter, necessary mounting bolts, seal retainer and lip type seal. See page G3-116 for adapter bolt pattern details.

★ CEMA drive shaft and key is furnished unless otherwise specified. See pages G3-117 thru G3-119 for optional drive shafts available from Dodge.

♣ Made to order.

Selection and dimensions

Screw conveyor shaft mount speed reducers
 SCXT7A – Double reduction screw conveyor drives



CEMA Drive shafts ★						
Drive shaft	Screw dia.	A	B	C	D	F Dia.
C7 x 2-7/16	12" - 14"	2.44	6.69	2.75	3.00	.64
C7 x 3	12" - 20"	3.00	6.88	2.88	3.00	.77
C7 x 3-7/16	18" - 24"	3.44	9.13	3.88	4.00	.89

All dimensions are in inches.

Selection and dimensions

Screw conveyor shaft mount speed reducers

SCXT7A – Double reduction screw conveyor drives

SCXT7A Screw conveyor drives †

Reducers				
Size	Part no.	AGMA code	Ratio	Weight
SCXT709A	247480 ♣	315D09	9.61	462
SCXT715A	356256 ♣	315D15	15.23	462
SCXT725A	356257	315D25	24.59	462

Description	Part no.	Weight
C7 Adapter Assembly ▲	356187	72
AC6/AC7 Adjustable Packing Kit ♣	356306	2.4
C7 x 2 7/16 Drive Shaft ★	356182 ♣	58
C7 x 3 Drive Shaft ★	356183	70
C7 x 3-7/16 Drive Shaft ★	356184	80.3

Accessories for SCXT7A reducers

Description	NEMA motor frame	Screw dia.	Part no.	Weight
M720 Standard Motor Mount	140T thru 360T	12"-20"	356269	106
M724L Long Motor Mount ♣●	140T thru 320T	24"	272631	130
SCXT7D SCD Reducer Belt Guard	140T thru 360T	–	247474	75
SCXT7D SCD Reducer Belt Guard for Long Motor Mount	140T thru 320T	–	247153	90
SCXT7 Cooling Fan Assembly	–	–	272326	6
SCXT7 Auxiliary Seal Kit	–	–	272727	8
SCXT7 Lube Kit	–	–	LUBEKITXT7	34.7
Dodge ability sensor			750000	0.5

SCXT7A Motor mount assembly dimensions

Motor mount	E ◆		V-belt drive center distances for various NEMA motor frames													
	Min.	Max.	56, 140		180		210		250		280		320		Min.	Max.
M720	17.5	21.7	17.1	20.5	18.1	21.5	18.8	22.2	19.8	23.2	20.5	24.0	21.5	25.0	22.5	26.0
M724L	23.5	27.7	22.4	26.1	23.3	27.1	24.1	27.8	25.0	28.8	25.8	29.5	26.8	30.5	–	–

† For a complete SCXT drive, order a reducer, drive shaft and adapter assembly by their respective part numbers. Drive is shipped unassembled.

♣ AC Adjustable packing kit, with braided seals, is furnished if specified. It bolts to the C adapter.

◆ Provides for V-Belt adjustment.

● Drawing dimensions are noted as **.

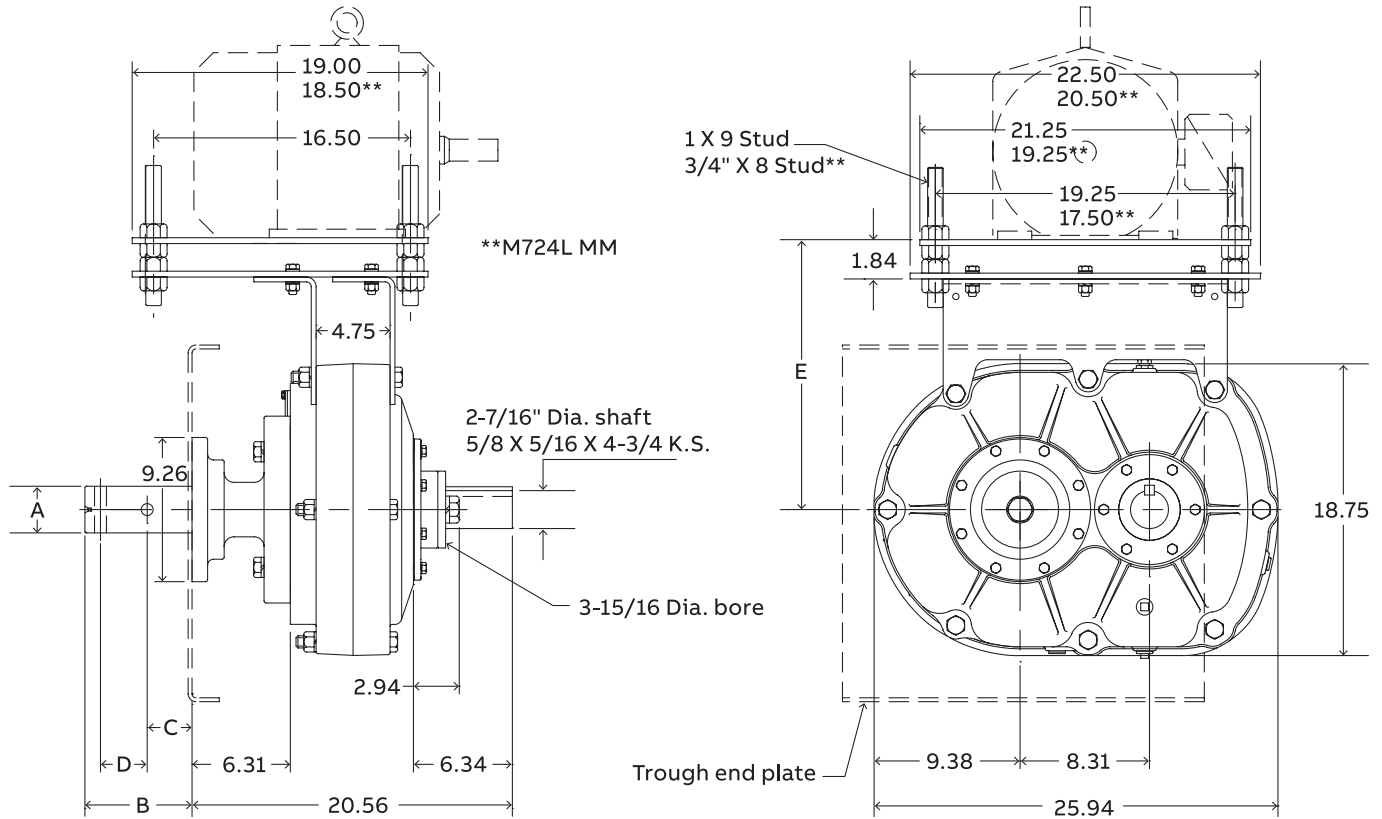
▲ Includes adapter, necessary mounting bolts, seal retainer and lip type seal. See page G3-116 for adapter bolt pattern details.

★ CEMA drive shaft and key is furnished unless otherwise specified. See pages G3-117 thru G3-119 for optional drive shafts available from Dodge.

♣ Made to order.

Selection and dimensions

Screw conveyor shaft mount speed reducers
 SCXT705 – Single reduction screw conveyor drives



CEMA Drive shafts ★						
Drive shaft	Screw dia.	A	B	C	D	F Dia.
C7 x 2-7/16	12" - 14"	2.44	6.69	2.75	3.00	.64
C7 x 3	12" - 20"	3.00	6.88	2.88	3.00	.77
C7 x 3-7/16	18" - 24"	3.44	9.13	3.88	4.00	.89

All dimensions are in inches.

Selection and dimensions

Screw conveyor shaft mount speed reducers
SCXT705 – Single reduction screw conveyor drives

SCXT705 Screw conveyor drives †

Reducers				
Size	Part no.	AGMA code	Ratio	Weight
SCXT705	356295 ♣	315S05	5.36	410

Description	Part no.	Weight
C7 Adapter assembly ▲	356187	72
AC6/AC7 Adjustable packing kit ♣	356306	2.4
C7 x 2 7/16 Drive shaft ★	356182 ♣	58
C7 x 3 Drive shaft ★	356183	70
C7 x 3-7/16 Drive shaft ★	356184	80.3

Accessories for SCXT705 reducers

Description	NEMA motor frame	Screw dia.	Part no.	Weight
M720 Standard motor mount	140T thru 360T	12"-20 "	356269	106
M724L Long motor mount ♣ ●	140T thru 320T	24 "	272631	130
SCXT7S SCD Reducer belt guard	140T thru 360T	–	247476	84
SCXT7S SCD Reducer belt guard for long motor mount	140T thru 320T	–	247149	100
SCXT705 Cooling fan assembly ♣	–	–	272685	6
SCXT705 Auxiliary seal kit	–	–	272727	8
SCXT705 Lube kit	–	–	LUBEKITTX705	39.3
Dodge ability sensor	–	–	750000	0.5

SCXT705 Motor mount assembly dimensions

Motor mount	E ◆		V-belt drive center distances for various NEMA motor frames													
			56, 140		180		210		250		280		320		360	
	Min.	Max.	Min.	Max.	Min.	Max.	Min.	Max.	Min.	Max.	Min.	Max.	Min.	Max.	Min.	Max.
M720	17.5	21.7	22.1	25.6	23.1	26.5	23.8	27.3	24.8	28.3	25.6	29.0	26.6	30.0	27.5	31.0
M724L	23.5	27.7	27.3	31.1	28.3	32.1	29.1	32.9	30.1	33.9	30.8	34.7	31.8	35.6	–	–

† For a complete SCXT drive, order a reducer, drive shaft and adapter assembly by their respective part numbers. Drive is shipped unassembled.

♣ AC Adjustable packing kit, with braided seals, is furnished if specified. It bolts to the C adapter.

◆ Provides for V-Belt adjustment.

● Drawing dimensions are noted as **.

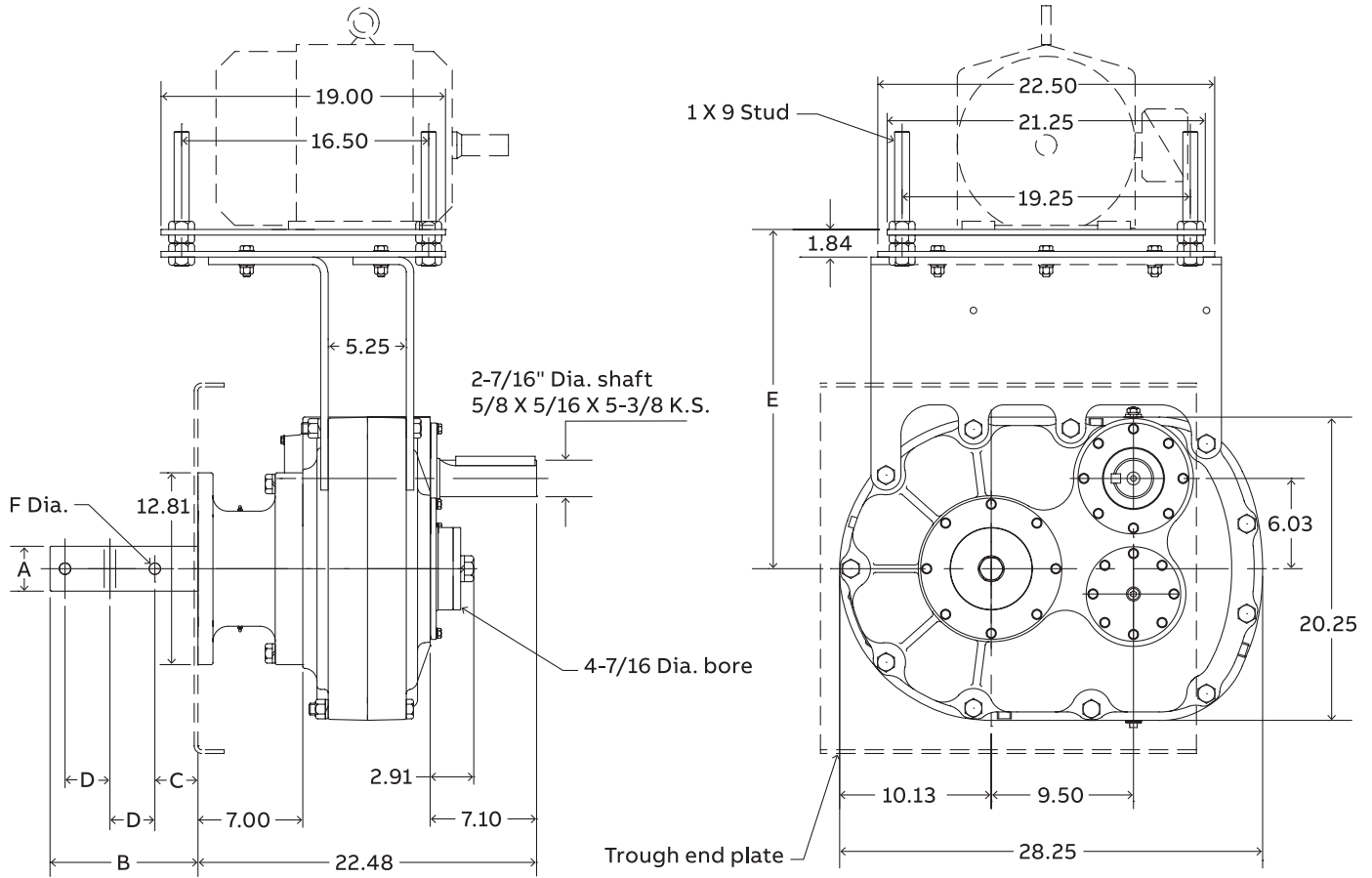
▲ Includes adapter, necessary mounting bolts, seal retainer and lip type seal. See page G3-116 for adapter bolt pattern details.

★ CEMA drive shaft and key is furnished unless otherwise specified. See pages G3-117 thru G3-119 for optional drive shafts available from Dodge.

♣ Made to order.

Selection and dimensions

Screw conveyor shaft mount speed reducers
 SCXT8A – Double reduction screw conveyor drives



CEMA Drive shafts ★

Drive shaft	Screw dia.	A	B	C	D	F Dia.
C8 x 3	12" - 20"	3.00	9.88	2.88	3.00	.77
C8 x 3-7/16	18" - 24"	3.44	13.13	3.88	4.00	.89

Selection and dimensions

Screw conveyor shaft mount speed reducers
SCXT8A – Double reduction screw conveyor drives

SCXT8A Screw conveyor drives †

Reducers				
Size	Part no.	AGMA code	Ratio	Weight
SCXT815A	248464 ♣	407D15	15.08	633
SCXT825A	248465 ♣	407D25	24.62	633

Description	Part no.	Weight
C8 Adapter Assembly ▲	248470 ♣	90
C8 x 3 Drive Shaft ★	248473 ♣	88
C8 x 3-7/16 Drive Shaft ★	248474 ♣	100

Accessories for SCXT8A reducers

Description	NEMA motor frame	Screw dia.	Part no.	Weight
M824L Long Motor Mount ♣	210T thru 360T	12" - 24"	248469	163
SCXT8D SCD Reducer Belt Guard ♣	210T thru 360T	–	248477	113
SCXT8 Cooling Fan Assembly	–	–	272327	9
SCXT8 Auxiliary Seal Kit ♣	–	–	248484	10
SCXT78 Lube Kit	–	–	LUBEKITXT8	40.5
Dodge ability sensor			750000	0.5

SCXT8A Motor mount assembly dimensions

Motor mount	E ♦		V-belt drive center distances for various NEMA motor frames													
	Min.	Max.	56, 140		180		210		250		280		320		360	
	Min.	Max.	Min.	Max.	Min.	Max.	Min.	Max.	Min.	Max.	Min.	Max.	Min.	Max.	Min.	Max.
M824	22.7	28.6	–	–	–	–	23.3	28.4	24.3	29.4	25.1	30.1	26.0	31.1	27.0	32.1

† For a complete SCXT drive, order a reducer, drive shaft and adapter assembly by their respective part numbers. Drive is shipped unassembled.

♣ AC Adjustable packing kit, with braided seals, is furnished if specified. It bolts to the C adapter.

♦ Provides for V-Belt adjustment.

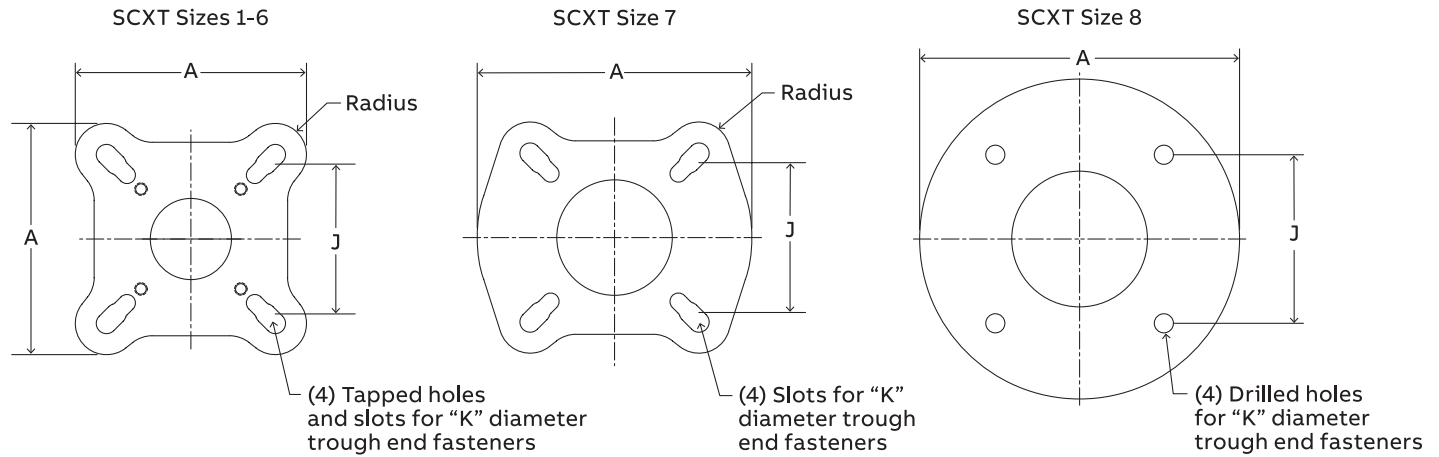
▲ Includes adapter, necessary mounting bolts, seal retainer and lip type seal. See page G3-116 for adapter bolt pattern details.

★ CEMA drive shaft and key is furnished unless otherwise specified. See pages G3-117 thru G3-119 for optional drive shafts available from Dodge.

♣ Made to order.

Modifications and accessories

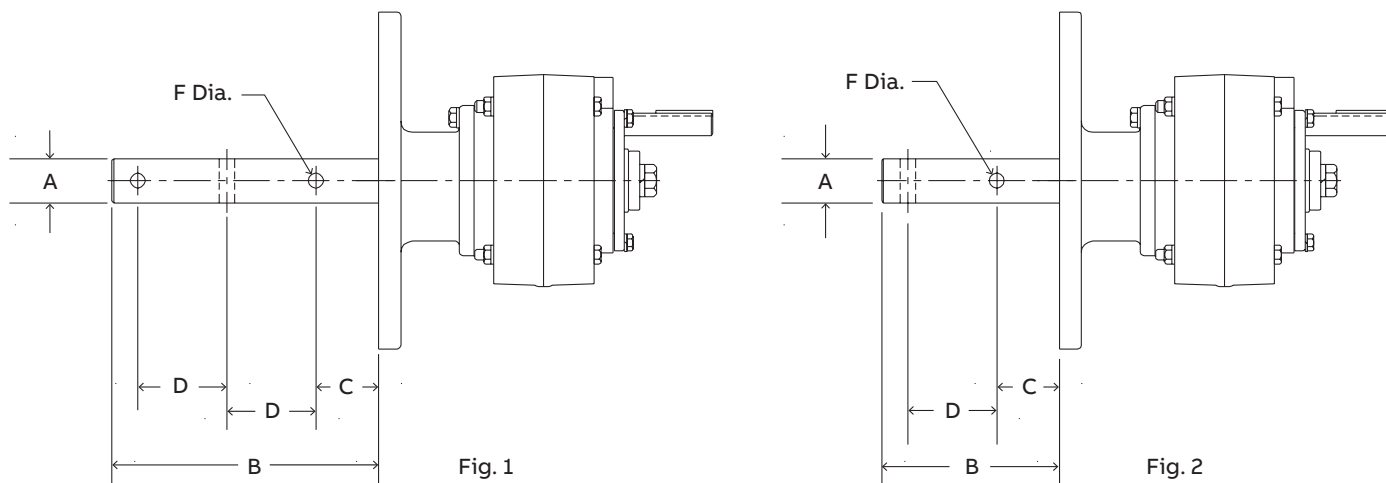
Screw conveyor shaft mount speed reducers
SCXT Screw conveyor adapters



Reducer size	Drive shaft diameter	J	K	A	Radius
SCXT 1	1-1/2	4	1/2	7.75	0.875
	2	5-1/8	5/8	7.75	0.875
	2-7/16	5-5/8	5/8	7.75	0.875
	3	6	3/4	7.75	0.875
SCXT 2	1-1/2	4	1/2	7.75	0.875
	2	5-1/8	5/8	7.75	0.875
	2-7/16	5-5/8	5/8	7.75	0.875
	3	6	3/4	7.75	0.875
SCXT 3	1-1/2	4	1/2	8.50	1.25
	2	5-1/8	5/8	8.50	1.25
	2-7/16	5-5/8	5/8	8.50	1.25
	3	6	3/4	8.50	1.25
SCXT 4	1-1/2	4	1/2	9.26	1.25
	2	5-1/8	5/8	9.26	1.25
	2-7/16	5-5/8	5/8	9.26	1.25
	3	6	3/4	9.26	1.25
SCXT 5	3-7/16	6-3/4	3/4	9.26	1.25
	2	5-1/8	5/8	9.26	1.25
	2-7/16	5-5/8	5/8	9.26	1.25
	3	6	3/4	9.26	1.25
SCXT 6	3-7/16	6-3/4	3/4	9.26	1.25
	2-7/16	5-5/8	5/8	9.26	1.25
	3	6	3/4	9.26	1.25
	3-7/16	6-3/4	3/4	9.26	1.25
SCXT 7	2-7/16	5-5/8	5/8	11.00	1.25
	3	6	3/4	11.00	1.25
	3-7/16	6-3/4	3/4	11.00	1.25
	3	6	3/4	12.81	n/a
SCXT 8	3-7/16	6-3/4	3/4	12.81	n/a

Modifications and accessories

Screw conveyor shaft mount speed reducers
 SCXT Screw conveyor drive optional drive shafts



Optional drive shafts for SCXT1A reducers ♣

Description	Drive shaft	Screw dia.	Part no.	Figure	A	B	C	D	F	Weight
Stainless steel * drive shafts	C1 x 1-1/2	6" - 9"	351147	2	1.50	6.00	2.13	3.00	0.52	7.20
	C1 x 2	9" - 12"	351148	2	2.00	6.00	2.13	3.00	0.64	9.10
	C1 x 2-7/16	12" - 14"	351149	2	2.44	6.69	2.75	3.00	0.64	12.50
3-hole drive shafts	C1 x 3	12" - 20"	351150	2	3.00	6.88	2.88	3.00	0.77	17.40
	C1 x 1-1/2	6" - 9"	351300	1	1.50	9.00	2.13	3.00	0.52	8.70
	C1 x 2	9" - 12"	351301	1	2.00	9.00	2.13	3.00	0.64	11.80
Stainless steel * 3-hole drive shafts	C1 x 2-7/16	12" - 14"	351302	1	2.44	9.69	2.75	3.00	0.64	16.40
	C1 x 3	12" - 20"	351303	1	3.00	9.88	2.88	3.00	0.77	23.40
	C1 x 1-1/2	6" - 9"	351025	1	1.50	9.00	2.13	3.00	0.52	8.70
Stainless steel * 3-hole drive shafts	C1 x 2	9" - 12"	351026	1	2.00	9.00	2.13	3.00	0.64	11.80
	C1 x 2-7/16	12" - 14"	351027	1	2.44	9.69	2.75	3.00	0.64	16.40
	C1 x 3	12" - 20"	351028	1	3.00	9.88	2.88	3.00	0.77	23.40

Optional drive shafts for SCXT2A reducers ♣

Description	Drive shaft	Screw dia.	Part no.	Figure	A	B	C	D	F	Weight
Stainless steel * drive shafts	C2 x 1-1/2	6" - 9"	352160	2	1.50	6.00	2.13	3.00	0.52	11.40
	C2 x 2	9" - 12"	352161	2	2.00	6.00	2.13	3.00	0.64	13.80
	C2 x 2-7/16	12" - 14"	352162	2	2.44	6.69	2.75	3.00	0.64	17.30
3-hole drive shafts	C2 x 3	12" - 20"	352163	2	3.00	6.88	2.88	3.00	0.77	19
	C2 x 1-1/2	6" - 9"	351305	1	1.50	9.00	2.13	3.00	0.52	12.90
	C2 x 2	9" - 12"	351306	1	2.00	9.00	2.13	3.00	0.64	16.50
Stainless steel * 3-hole drive shafts	C2 x 2-7/16	12" - 14"	351307	1	2.44	9.69	2.75	3.00	0.64	21.20
	C2 x 3	12" - 20"	351308	1	3.00	9.88	2.88	3.00	0.77	25
	C2 x 1-1/2	6" - 9"	352186	1	1.50	9.00	2.13	3.00	0.52	12.90
Stainless steel * 3-hole drive shafts	C2 x 2	9" - 12"	352187	1	2.00	9.00	2.13	3.00	0.64	16.50
	C2 x 2-7/16	12" - 14"	352188	1	2.44	9.69	2.75	3.00	0.64	21.20
	C2 x 3	12" - 20"	352189	1	3.00	9.88	2.88	3.00	0.77	25

* Supplied as #316 stainless steel.

♣ Made to order Consult Dodge for lead time.

Modifications and accessories

Screw conveyor shaft mount speed reducers
SCXT Screw conveyor drive optional drive shafts

Optional drive shafts for SCXT3B and SCXT305A reducers ♣

Description	Drive shaft	Screw dia.	Part no.	Figure	A	B	C	D	F	Weight
Stainless steel * drive shafts	C3A x 1-1/2	9"	243446	2	1.50	6.00	2.13	3.00	0.52	15
	C3A x 2	9" - 12"	243447	2	2.00	6.00	2.13	3.00	0.64	16
	C3A x 2-7/16	12" - 14"	243448	2	2.44	6.69	2.75	3.00	0.64	19.50
3-hole drive shafts	C3A x 3	12" - 20"	243449	2	3.00	6.88	2.88	3.00	0.77	26
	C3A x 1-1/2	9"	243016	1	1.50	9.00	2.13	3.00	0.52	16.50
	C3A x 2	9" - 12"	243017	1	2.00	9.00	2.13	3.00	0.64	18.70
	C3A x 2-7/16	12" - 14"	243018	1	2.44	9.69	2.75	3.00	0.64	23.40
Stainless steel * 3-hole drive shafts	C3A x 3	12" - 20"	243019	1	3.00	9.88	2.88	3.00	0.77	32
	C3A x 1-1/2	9"	353180	1	1.50	9.00	2.13	3.00	0.52	16.50
	C3A x 2	9" - 12"	353181	1	2.00	9.00	2.13	3.00	0.64	18.70
	C3A x 2-7/16	12" - 14"	353182	1	2.44	9.69	2.75	3.00	0.64	23.40
	C3A x 3	12" - 20"	353183	1	3.00	9.88	2.88	3.00	0.77	32

Optional drive shafts for SCXT4B and SCXT405A reducers ♣

Description	Drive shaft	Screw dia.	Part no.	Figure	A	B	C	D	F	Weight
Stainless steel * drive shafts	C1 x 1-1/2	6" - 9"	351147	2	1.50	6.00	2.13	3.00	0.52	7.20
	C1 x 2	9" - 12"	351148	2	2.00	6.00	2.13	3.00	0.64	9.10
	C1 x 2-7/16	12" - 14"	351149	2	2.44	6.69	2.75	3.00	0.64	12.50
3-hole drive shafts	C1 x 3	12" - 20"	351150	2	3.00	6.88	2.88	3.00	0.77	17.40
	C1 x 1-1/2	6" - 9"	351300	1	1.50	9.00	2.13	3.00	0.52	8.70
	C1 x 2	9" - 12"	351301	1	2.00	9.00	2.13	3.00	0.64	11.80
	C1 x 2-7/16	12" - 14"	351302	1	2.44	9.69	2.75	3.00	0.64	16.40
Stainless steel * 3-hole drive shafts	C1 x 3	12" - 20"	351303	1	3.00	9.88	2.88	3.00	0.77	23.40
	C1 x 1-1/2	6" - 9"	351025	1	1.50	9.00	2.13	3.00	0.52	8.70
	C1 x 2	9" - 12"	351026	1	2.00	9.00	2.13	3.00	0.64	11.80
	C1 x 2-7/16	12" - 14"	351027	1	2.44	9.69	2.75	3.00	0.64	16.40
	C1 x 3	12" - 20"	351028	1	3.00	9.88	2.88	3.00	0.77	23.40

Optional drive shafts for SCXT5C and SCXT505A reducers ♣

Description	Drive shaft	Screw dia.	Part no.	Figure	A	B	C	D	F	Weight
Stainless steel * drive shafts	C5B x 2	9" - 12"	245651	2	2.00	6.00	2.13	3.00	0.64	29.40
	C5B x 2-7/16	12" - 14"	245652	2	2.44	6.69	2.75	3.00	0.64	33
	C5B x 3	12" - 20"	245653	2	3.00	6.88	2.88	3.00	0.77	37.90
3-hole drive shafts	C5B x 3-7/16	18" - 24"	245654	2	3.44	9.13	3.88	4.00	0.89	48.30
	C5B x 2	9" - 12"	245474	1	2.00	9.00	2.13	3.00	0.64	32.10
	C5B x 2-7/16	12" - 14"	245476	1	2.44	9.69	2.75	3.00	0.64	36.90
	C5B x 3	12" - 20"	245477	1	3.00	9.88	2.88	3.00	0.77	43.90
Stainless steel * 3-hole drive shafts	C5B x 3-7/16	18" - 24"	245478	1	3.44	14.13	3.88	4.00	0.89	58.80
	C5B x 2	9" - 12"	355225	1	2.00	9.00	2.13	3.00	0.64	32.10
	C5B x 2-7/16	12" - 14"	355226	1	2.44	9.69	2.75	3.00	0.64	36.90
	C5B x 3	12" - 20"	355227	1	3.00	9.88	2.88	3.00	0.77	43.90
	C5B x 3-7/16	18" - 24"	355228	1	3.44	14.13	3.88	4.00	0.89	58.80

* Supplied as #316 stainless steel.

♣ Made to order Consult Dodge for lead time.

Modifications and accessories

Screw conveyor shaft mount speed reducers
 SCXT Screw conveyor drive optional drive shafts

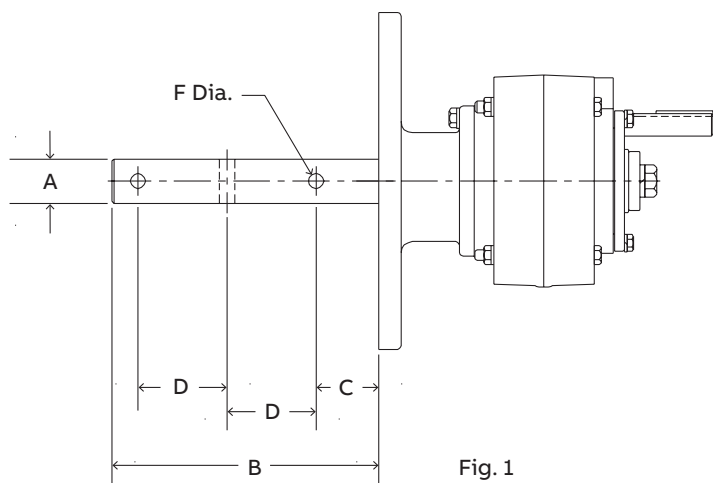


Fig. 1

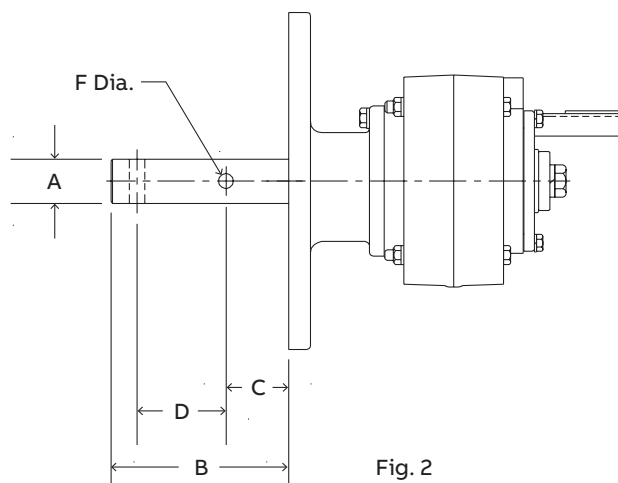


Fig. 2

Optional drive shafts for SCXT6A reducers ♣

Description	Drive shaft	Screw dia.	Part no.	Figure	A	B	C	D	F	Weight
Stainless steel * drive shafts	C6 x 2-7/16	12" - 14"	356014	2	2.44	6.69	2.75	3.00	0.64	47.7
	C6 x 3	12" - 20"	356015	2	3.00	6.88	2.88	3.00	0.77	52.7
	C6 x 3-7/16	18" - 24"	356016	2	3.44	9.13	3.88	4.00	0.89	63.0
3-hole drive shafts	C6 x 2-7/16	12" - 14"	351327	1	2.44	9.69	2.75	3.00	0.64	51.6
	C6 x 3	12" - 20"	351328	1	3.00	9.88	2.88	3.00	0.77	58.7
	C6 x 3-7/16	18" - 24"	351329	1	3.44	14.13	3.88	4.00	0.89	73.5
Stainless steel * 3-hole drive shafts	C6 x 2-7/16	12" - 14"	356275	1	2.44	9.69	2.75	3.00	0.64	51.6
	C6 x 3	12" - 20"	356276	1	3.00	9.88	2.88	3.00	0.77	58.7
	C6 x 3-7/16	18" - 24"	356277	1	3.44	14.13	3.88	4.00	0.89	73.5

Optional drive shafts for SCXT7A reducers ♣

Description	Drive shaft	Screw dia.	Part no.	Figure	A	B	C	D	F	Weight
Stainless steel * drive shafts	C7 x 2-7/16	12" - 14"	356240	2	2.44	6.69	2.75	3.00	0.64	58.0
	C7 x 3	12" - 20"	356241	2	3.00	6.88	2.88	3.00	0.77	70.0
	C7 x 3-7/16	18" - 24"	356242	2	3.44	9.13	3.88	4.00	0.89	80.3
3-hole drive shafts	C7 x 2-7/16	12" - 14"	351332	1	2.44	9.69	2.75	3.00	0.64	61.9
	C7 x 3	12" - 20"	351333	1	3.00	9.88	2.88	3.00	0.77	76.0
	C7 x 3-7/16	18" - 24"	351334	1	3.44	14.13	3.88	4.00	0.89	90.8
Stainless steel* 3-Hole drive shafts	C7 x 2-7/16	12" - 14"	356281	1	2.44	9.69	2.75	3.00	0.64	61.9
	C7 x 3	12" - 20"	356282	1	3.00	9.88	2.88	3.00	0.77	76.0
	C7 x 3-7/16	18" - 24"	356283	1	3.44	14.13	3.88	4.00	0.89	90.8

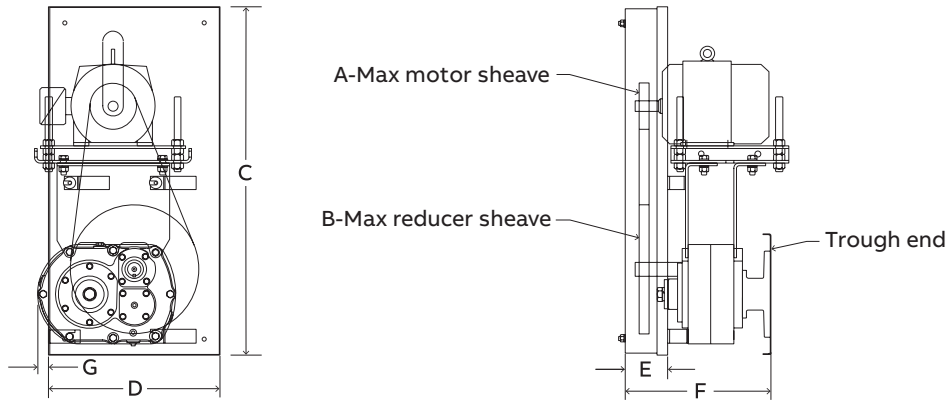
* Supplied as #316 stainless steel.

♣ Made to order Consult Dodge for lead time.

Note: See page G3-114 and G3-115 for dimensions and part numbers for drive shafts available for SCXT8A screw conveyor drives.

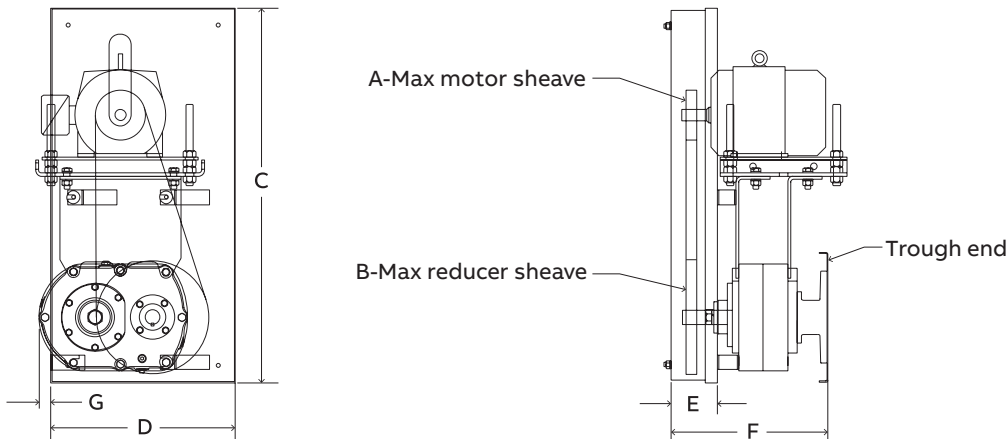
Modifications and accessories

Screw conveyor shaft mount speed reducers
 Slotted metal panel belt guards



Belt guards for double reduction SCXT reducers (9, 15, 25:1) with standard motor mounts

Reducer size	Belt guard size	Part number	Motor mount no.	Wt.	NEMA motor frame	Center distance		A	B	C	D	E	F	G
						Min.	Max.							
SCXT1A	SCXT1D	241489	M 112L	21	56T-215T	13.5	19.0	5.0	12.0	27.5	13.0	3.5	12.5	1.00
SCXT2A	SCXT2D	242489	M 214L	32	56T-215T	14.9	20.0	5.0	12.0	30.0	14.0	3.8	13.5	0.875
SCXT3B	SCXT3D	243416 ▲	M 316L	40	56T-215T	15.8	22.0	6.0	14.0	32.5	16.0	4.0	14.6	1.06
SCXT4B	SCXT4D	244489	M 418L	44	143T-286T	16.9	24.5	7.0	15.0	37.0	17.0	5.0	16.8	1.78
SCXT5C	SCXT5D	245495 ▲	M 518L	45	143T-286T	16.6	25.2	7.0	15.0	37.0	18.0	4.3	18.9	3.25
SCXT6A	SCXT6D	246476	M 620L	60	143T-326T	17.0	25.5	8.0	18.0	41.0	20.0	6.0	21.4	4.38
SCXT7A	SCXT7D	247474	M 720L	75	143T-365T	17.1	26.0	10.0	20.0	43.0	23.0	6.0	23.5	6.25



Belt guards for single reduction SCXT reducers (5:1) with standard motor mounts

Reducer size	Belt guard size	Part number	Motor mount no.	Wt.	NEMA motor frame	Center distance		A	B	C	D	E	F	G
						Min.	Max.							
SCXT105	SCXT1S	241491	M 112	30	56T-215T	15.4	20.6	5.0 ■	12.0	31.0	13.50	3.50	12.50	0.38
SCXT205	SCXT2S	242491	M 214	34	56T-215T	17.0	22.2	6.0 ■	12.0	33.0	13.50	3.75	13.50	1.25
SCXT305A	SCXT3S	243418 ▲	M 316	40	56T-215T	18.2	24.4	7.0	12.0	35.0	13.50	4.00	14.63	2.38
SCXT405A	SCXT4S	244491	M 418	50	143T-286T	19.6	27.2	8.0	12.0	40.0	14.50	5.00	16.75	3.63
SCXT505A	SCXT5S	245497 ▲	M 518	70	143T-286T	19.7	28.2	8.0	12.0	40.0	14.50	5.50	18.91	5.68
SCXT605	SCXT6S	246478	M 620	77	143T-326T	21.1	29.6	10.0	16.0	45.0	18.00	6.00	21.44	5.97
SCXT705	SCXT7S	247476	M 720	84	143T-365T	22.1	31.0	10.0	16.0	45.5	19.00	6.00	23.53	9.25

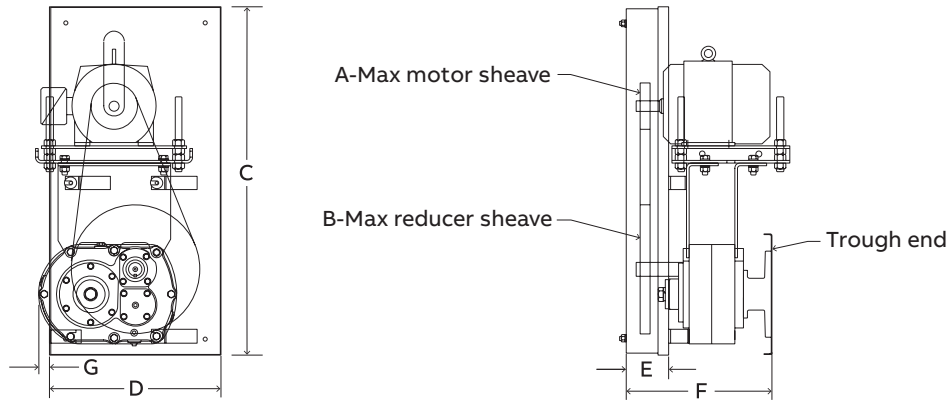
■ Guard will interfere with floor when used with 6" screw unless trough is raised above floor.

▲ These belt guards do not fit the larger frame, higher H.P. motor mounts in SCXT Selection/Dimension pages. Consult Dodge for special belt guard.

♣ Made to order.

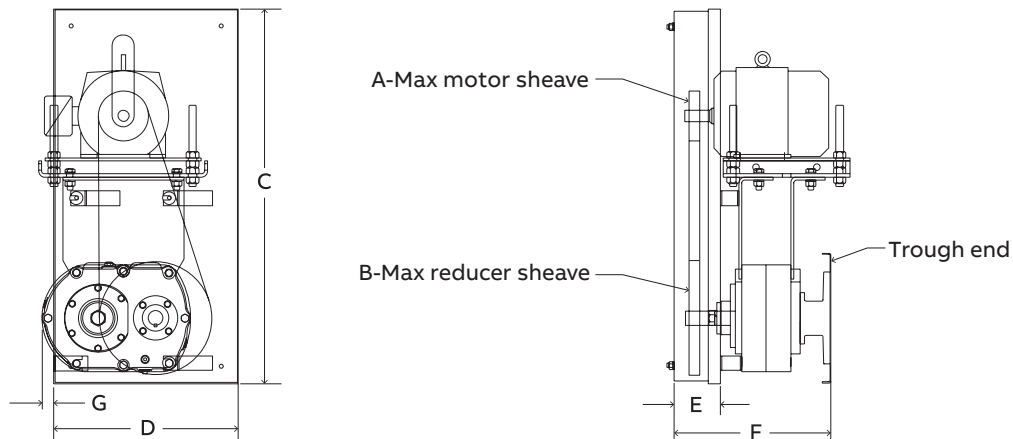
Modifications and accessories

Screw conveyor shaft mount speed reducers
 Slotted metal panel belt guards



Belt guards for double reduction SCXT reducers (9, 15, 25:1) with long motor mounts

Reducer size	Belt guard size	Part number	Motor mount no.	Wt.	NEMA motor frame	Center distance		A	B	C	D	E	F	G
						Min.	Max.							
SCXT1A	SCXT1DLMM	241149	M120L	26	56T-215T	19.5	25.0	5.0	12.0	33.5	13.0	3.50	12.50	1.00
SCXT2A	SCXT2DLMM	242223	M220L	37	56T-215T	20.9	26.0	5.0	12.0	36.0	14.0	3.75	13.50	0.875
SCXT3B	SCXT3DLMM	243154 ▲	M320L	45	56T-215T	21.8	27.0	6.0	14.0	38.0	16.0	4.00	14.63	1.06
SCXT4B	SCXT4DLMM	244152 ▲	M424L	50	143T-286T	23.2	30.4	7.0	15.0	43.0	17.0	5.00	16.75	1.78
SCXT5C	SCXT5DLMM	245103 ▲	M524L	52	143T-286T	22.9	30.9	7.0	15.0	43.0	18.0	4.25	18.91	3.25
SCXT6A	SCXT6DLMM	246148	M624L	65	143T-326T	23.3	31.4	8.0	18.0	47.0	20.0	6.00	21.44	4.38
SCXT7A	SCXT7DLMM	247153 ▲	M724L	80	143T-326T	23.2	30.5	10.0	20.0	49.0	23.0	6.00	23.53	6.25
SCXT8A	SCXT8DLMM	248477 ♣	M824L	113	210T-360T	23.3	32.1	12.0	25.0	53.0	28.0	6.50	24.81	5.62



Belt guards for single reduction SCXT reducers (5:1) with long motor mounts

Reducer size	Belt guard size	Part number	Motor mount no.	Wt.	NEMA motor frame	Center distance		A	B	C	D	E	F	G
						Min.	Max.							
SCXT105	SCXT1SLMM	241142	M120L	35	56T-215T	21.4	26.6	5.0 ■	12.0	37.0	13.5	3.50	12.50	0.38
SCXT205	SCXT2SLMM	242114	M220L	40	56T-215T	23.3	28.2	6.0 ■	12.0	39.0	13.5	3.75	13.50	1.25
SCXT305A	SCXT3SLMM	243167 ▲	M320L	45	56T-215T	24.2	29.4	7.0	12.0	41.0	13.5	4.00	14.63	2.38
SCXT405A	SCXT4SLMM	244167 ▲	M424L	55	143T-286T	25.9	33.2	8.0	12.0	46.0	14.5	5.00	16.75	3.63
SCXT505A	SCXT5SLMM	245015 ▲	M524L	70	143T-286T	26.0	33.2	8.0	12.0	46.0	14.5	5.50	18.91	5.68
SCXT605	SCXT6SLMM	246142	M624L	82	143T-326T	27.4	35.5	10.0	16.0	51.0	18.0	6.00	21.44	5.97
SCXT705	SCXT7SLMM	247149	M724L	90	143T-326T	28.2	35.6	10.0	16.0	51.5	19.0	6.00	23.53	9.25

■ Guard will interfere with floor when used with 6" screw unless trough is raised above floor.

▲ These belt guards do not fit the larger frame, higher H.P. motor mounts in SCXT Selection/Dimension pages. Consult Dodge for special belt guard.

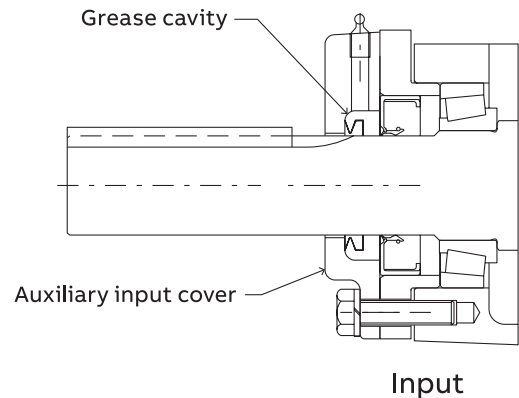
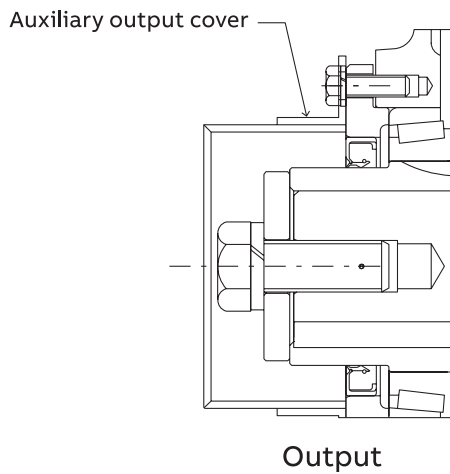
♣ Made to order.

Modifications and accessories

Screw conveyor shaft mount speed reducers Auxiliary seal kit for screw conveyor drive reducers

Screw conveyor drives often operate in harsh environments in which the input shaft side of the reducer ends up turning in such materials as sand, cement, saw dust and grain. These materials are very abrasive and often damage seals, bearings and gears. These damages can lead to costly repair bills and downtime. To help prevent these maintenance problems Dodge offers an auxiliary seal kit to protect the input side of the reducer. The kit contains a drive shaft end cover, special

filter breather and a grease purged input seal with necessary mounting hardware. The auxiliary seals prevent contaminants from getting to the seal area and thus prevents them from entering the reducer. Use the auxiliary seal kit to get the longest possible life out of your Dodge screw conveyor drive Reducer. Reducer housings on sizes SCXT1 and SCXT2 must be drilled and tapped to accommodate the input auxiliary seal.



Auxiliary seal kits for SCXT reducers ● ◆

Reducer size	Nominal ratio	Part number	Nominal ratio	Part number ♣
SCXT1A	9, 15, 25	272721	5	251146
SCXT2A	9, 15, 25	272722	5	252146
SCXT3B	9, 15, 25	243582	5	253146
SCXT4B	9, 15, 25	244677	5	254146
SCXT5C	9, 15, 25	245637	5	255148
SCXT6A	5, 9, 15, 25	272726	-	-
SCXT7A	5, 9, 15, 25	272727	-	-
SCXT8A	15, 25	248484 ♣	-	-

Input auxiliary seal for SCXT reducers ● ■

Reducer size	Nominal ratio	Part number	Nominal ratio	Part number
SCXT1A	9, 15, 25	241102	5	241109
SCXT2A	9, 15, 25	242102 ♣	5	242109 ♣
SCXT3B	9, 15, 25	243108	5	243109
SCXT4B	9, 15, 25	244117	5	244159 ♣
SCXT5C	9, 15, 25	245104	5	245106 ♣
SCXT6A	5, 9, 15, 25	246102	-	-
SCXT7A	5, 9, 15, 25	247102 ♣	-	-
SCXT8A	15, 25	248102	-	-

- Guard will interfere with floor when used with 6" screw unless trough is raised above floor.
- Input auxiliary seals cannot be used on the same input shaft with a cooling fan
- ◆ Auxiliary seal kit consists of drive shaft end cover, filter breather, grease purged input seal and all mounting hardware.
- ♣ Made to order.