



POLY-DISC

SPECIFICATION

POLY-DISC Couplings are a pin type coupling using a molded polyurethane disc. The physical properties of the disc allow for the cushioning of shock loads and the resistance to most common chemicals such as acids, alkalis and petroleum products. The disc has an operating range of -90°F to +170°F.

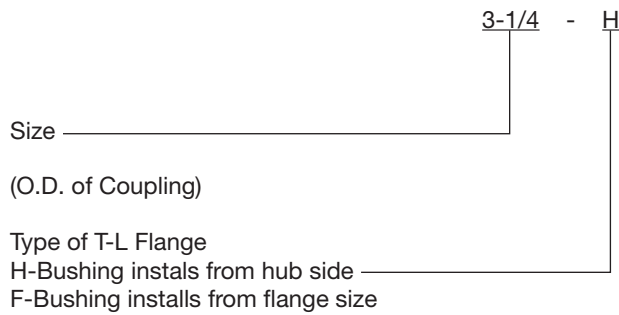
The flexible disc is captured through metallic pins, utilizing a light press fit over the pins to prevent the accumulation of abrasive particles between the disc and pins. The pin holes are barreled to allow 2° angular misalignment and the flexible disc allows 1/32" parallel misalignment. The disc has spacer buttons to achieve automatic flange spacing which speeds up installation. Both flanges are machined all over and are taper bored to receive TAPER-LOCK bushings to permit quick and easy installation and removal on shafts of equal or different diameters.

HOW TO ORDER

Consists of:

- (2) TAPER-LOCK Flanges
- (2) TAPER-LOCK Bushings
- (1) POLY-DISC Element

NOMENCLATURE



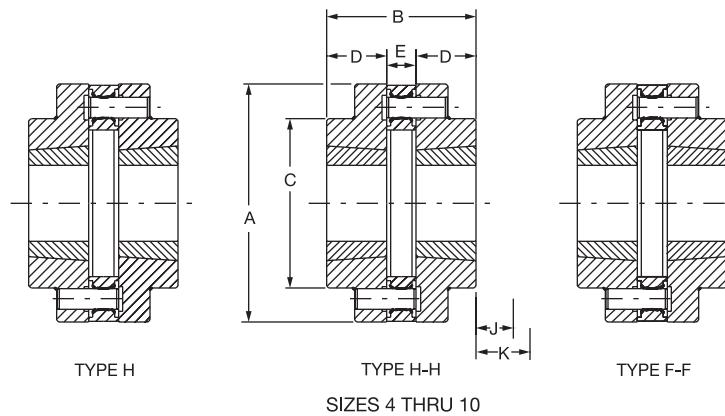
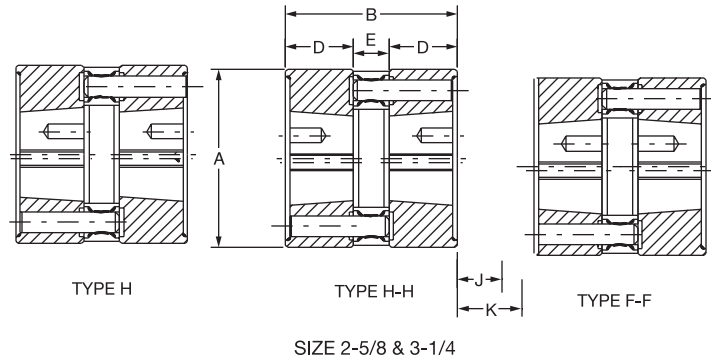
NOTE: Instruction manuals for POLY-DISC Couplings available on www.baldor.com

FEATURES/BENEFITS PAGE PT1-76	SELECTION/DIMENSIONS PAGE PT1-76	MODIFICATION/ACCESSORIES PAGE PT1-79	ENGINEERING/TECHNICAL PAGE PT1-81
----------------------------------	-------------------------------------	---	--------------------------------------

SPECIFICATION/HOW TO ORDER NOMENCLATURE



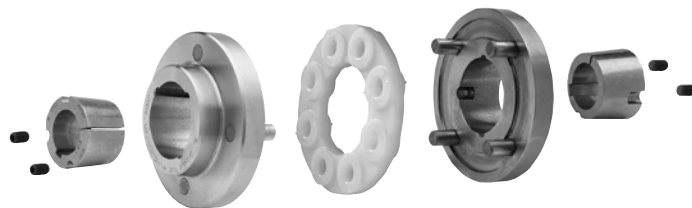
POLY-DISC



Coupling Size	TL Bushing Size	Min. Bore	Max. Bore	HP/100	Torque (In-Lb)	Max. RPM	A	B	C	D	E	J	K	Weight (Lbs.)	Inertia (Lb-Ft ²)	Holes In disc
2-5/8	1008	1/2	1	0.29	180	3600	2.63	2.56	2.63	1.00	0.69	0.63	0.75	2.50	2.30	6
3-1/4	1210	1/2	1-1/4	0.57	360	3600	3.25	2.88	3.25	1.13	0.75	0.81	1.06	4.15	6.20	6
4	1215	1/2	1-1/4	0.95	600	3600	4.00	3.63	2.63	1.50	0.63	0.81	1.06	5.80	10.00	8
5-1/4	1615	1/2	1-11/16	2.29	1440	3600	5.25	3.75	3.25	1.50	0.75	0.81	1.06	12.10	34.40	8
7	2517	1/2	2-11/16	4.6	2900	3000	7.00	4.38	4.97	1.75	0.88	1.00	1.63	25.90	141.20	10
8	2517	1/2	2-11/16	10	6300	2400	8.00	4.63	5.00	1.75	1.13	1.00	1.63	34.10	246.70	12
10	3030	15/16	3-1/4	17.26	10900	2000	10.00	7.5	6.00	3.00	1.50	1.31	2.69	77.70	866.00	12

POLY-DISC Part Numbers

Coupling Size	TL Bushing Size	T-L Flanges		Disc
		Type H	Type F	
2-5/8	1008	008057	008058	008030
3-1/4	1210	008059	008060	008031
4	1215	008041	008040	008032
5-1/4	1615	008043	008042	008033
7	2517	008045	008044	008034
8	2517	008047	008046	008035
10	3030	008049	008048	008036



Complete coupling consists of:

- (2) TAPER-LOCK Flanges
- (2) TAPER-LOCK Bushings
- (1) POLY-DISC Element

NOTE: TAPER-LOCK bushings ordered separately.
Refer to Bushing section PT6-15

FEATURES/BENEFITS PAGE PT1-73	SELECTION/DIMENSIONS PAGE PT1-74	MODIFICATION/ ACCESSORIES PAGE PT1-79	ENGINEERING/TECHNICAL PAGE PT1-81
----------------------------------	-------------------------------------	--	--------------------------------------