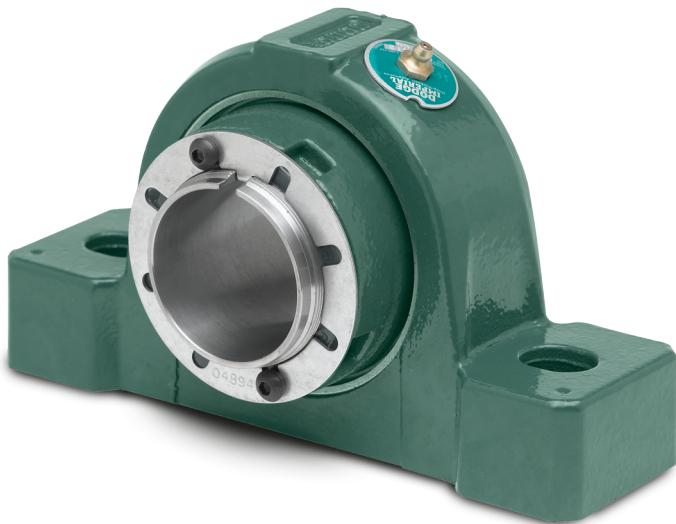




MECHANICAL POWER TRANSMISSION

Dodge® ISN Bearings

Easy installation and removal.



Dodge ISN mounted spherical roller bearings feature a patented integral adapter mounting and removal system that makes this bearing easy to install and remove with no shaft damage. The ISN arrives in one piece and is out-of-the box ready to install.

ISN benefits

- Factory sealed and greased
- Patented sealing for extended life
- Fully concentric on the shaft
- Interchangeable with SN dimensioned housings
- Expansion capability

Product offering

- Cast iron two-bolt plummer block bore sizes 30mm to 140mm
- Ductile iron four-bolt plummer block bore sizes 150mm to 170mm

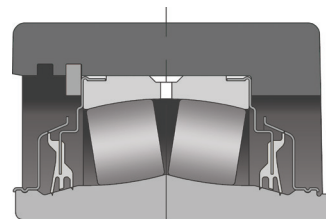
End covers for safety and reliability

Optional end covers keep workers safe from rotating shafts and provide an additional layer of reliability by preventing contaminants from coming in contact with the seal. ISN end covers are designed for durability and ease of installation. Both open and closed versions are available to fit any application need.



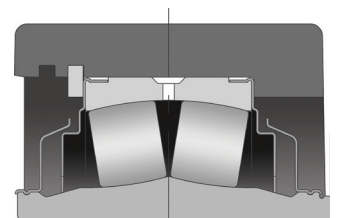
Innovative sealing solutions

The Trident contact seal is extremely effective for dirty environments, low-to-medium speeds, and normal ambient conditions. Made of nitrile material, this triple-lip rubbing seal has a low coefficient of friction, and its seal land maintains full seal contact even when misaligned.



Trident® seals

With corrosion resistant flingers and steel clearance seals, the labyrinth seal is ideal for higher speeds and higher operating temperatures.



Labyrinth seals

ISN benefits vs. standard SN products



Dodge ISN mounted spherical roller bearing	Standard SN products
Factory greased and sealed	User packs grease-subject to on-site contamination
Cost of initial grease fill included with bearing	Customer pays extra for initial grease fill
Arrives is one package - shaft ready	Three or more packages – user assembled
Constant seal pressure in misaligned conditions	Diminished seal pressure in misaligned conditions
Seal retains grease near the rollers	Grease migrates away from rollers to housing cavity
Simple clearance setting – no special tools needed	Requires feeler gauges
Easy, intuitive removal method	Difficult to remove

Part numbers for ISN end covers

Shaft size	Closed end cover		Open end cover	
	Part number	Part description	Part number	Part description
30mm	069960	IPEC08 (107)	070251	IPECO-08-30mm
35mm	069960	IPEC08 (107)	070252	IPECO-08-35mm
40mm	069961	IPEC09 (111)	070253	IPECO-09-40mm
50mm	069962	IPEC10 (115)	070255	IPECO-10-50mm
55mm	069963	IPEC11 (203)	070256	IPECO-11-55mm
60mm	069964	S2IPEC13 New design (206-208)	070257	IPECO-13-60mm
65mm	069965	IPEC15 (215)	070258	IPECO-15-65mm
70mm	069965	IPEC15 (215)	070259	IPECO-15-70mm
75mm	069965	IPEC15 (215)	070260	IPECO-15-75mm
80mm	069966	IPEC18 (307)	070261	IPECO-18-80mm
85mm	069966	IPEC18 (307)	070262	IPECO-18-85mm
90mm	069967	S2IPEC20 New design (311-400)	070263	IPECO-20-90mm
100mm	069967	S2IPEC20 New design (311-400)	070264	IPECO-20-100mm
110mm	069968	S2IPEC22 New design (407-408)	070265	IPECO-22-110mm
115mm	069969	S2IPEC26 New design (415-500)	070266	IPECO-26-115mm
125mm	069969	S2IPEC26 New design (415-500)	070267	IPECO-26-125mm
140mm	069983	IPEC-28	070268	IPECO-28-140mm
150mm	069984	IPEC-32	070269	IPECO-32-150mm
160mm	069985	IPEC-36	070270	IPECO-36-160mm
170mm	069985	IPEC-36	070271	IPECO-36-170mm

