



COUPLINGS

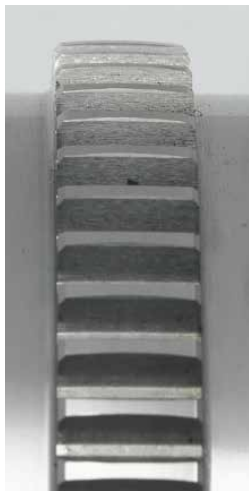
Gear Coupling

Designed for industry-leading performance



Gear coupling

Highest torque and largest bore capacity in the industry



Easy to install

- Captured hardware allows for lower installation time compared to competitors
- Interchangeable with AGMA 9008 gear couplings

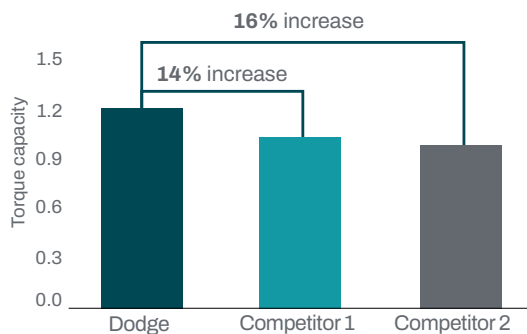
Long-lasting performance

- High-strength bolts for peace of mind
- Dodge® coupling-certified components available for quick maintenance

Extended equipment life

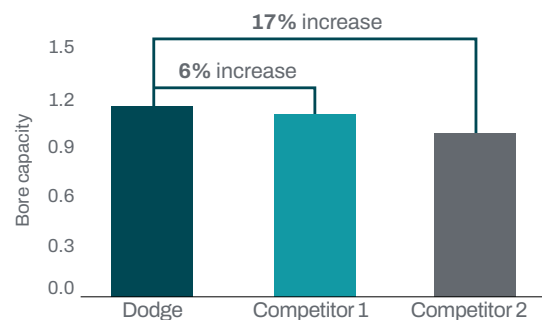
- High-strength steel provides higher torque and bore capacity than competitors
- Smaller footprint reduces overhung bearing load compared to competitor AGMA 9008 gear couplings

Increased torque capacity



Head-to-head against AGMA gear couplings, our gear coupling can be downsized based on torque ratings.

Increased bore capacity



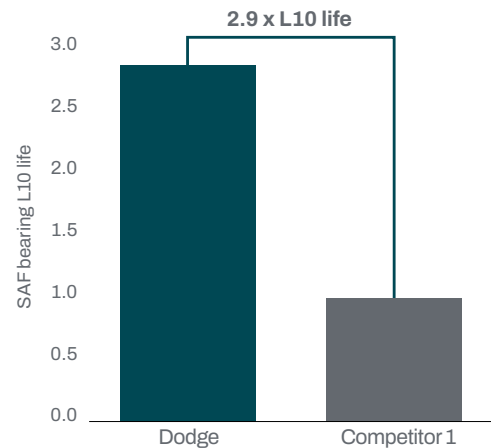
Head-to-head against AGMA gear couplings, our gear coupling can be downsized based on bore capacity.

Gear coupling interchange

Dodge	Falk Lifeaig [*]	Kop-Flex Koppers series H	Amerigear Zurn F series	Lovejoy
1.0	1010G	1	201	1
1.5	1015G	1-1/2	201-1/2	1-1/2
2.0	1020G	2	202	2
2.5	1025G	2-1/2	202-1/2	2-1/2
3.0	1030G	3	203	3
3.5	1035G	3-1/2	203-1/2	3-1/2
4.0	1040G	4	204	4
4.5	1045G	4-1/2	204-1/2	4-1/2
5.0	1050G	5	205	5
5.5	1055G	5-1/2	205-1/2	5-1/2
6.0	1060G	6	206	6
7.0	1070G	7	207	7

^{*}G20 - Flex-flex, G52 - Flex-rigid, G82 - Rigid-rigid

Reduction of overhung loads



Downsizing from 4.5 to 4.0 for a 22215 SAF bearing.

Attention to every detail

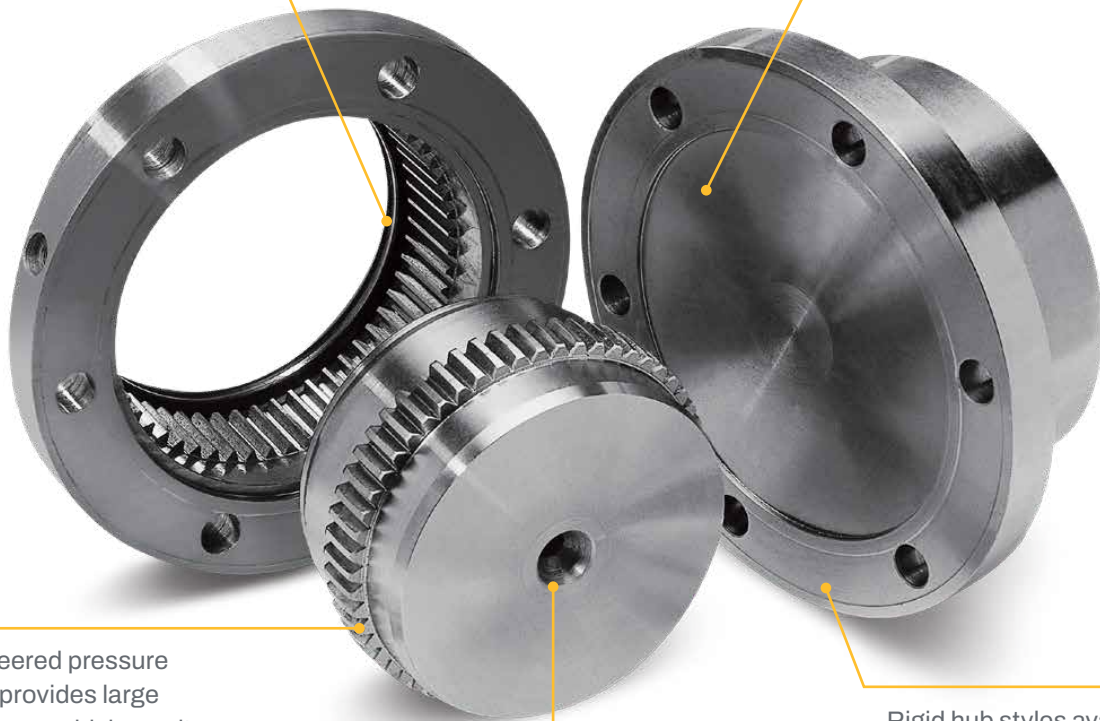
Maximize safety, efficiency, and durability

Every detail of the Dodge gear coupling has been meticulously designed to improve coupling operation and reduce downtime. The ISO Class 10.9 hardware allows for reliable torque transmission. Hex nuts are held in place by the coupling hub for quick and easy installation, while the hub itself delivers more bore capacity compared to competitors. This allows for coupling downsizing.



Reliable O-ring design to effectively seal against contaminants

High-quality carbon steel to ensure longer service life



Engineered pressure angle provides large tooth base which results in high safety factor

Rigid hub styles available for added bore capacity

Flexible hub styles available for added misalignment capabilities

DGC exposed bolt part numbers

Part number	Description	Part number	Description	Part number	Description
Size 1.0		Size 3.0		Size 5.0	
398000	DGC 1.0 Flex Hub EB	398004	DGC 3.0 Flex Hub EB	398008	DGC 5.0 Flex Hub EB
398012	DGC 1.0 Sleeve EB	398016	DGC 3.0 Sleeve EB	398020	DGC 5.0 Sleeve EB
398024	DGC 1.0 Rigid Hub EB	398028	DGC 3.0 Rigid Hub EB	398032	DGC 5.0 Rigid Hub EB
398036	DGC 1.0 EB Hardware Kit	398040	DGC 3.0 EB Hardware Kit	398044	DGC 5.0 EB Hardware Kit
Size 1.5		Size 3.5		Size 5.5	
398001	DGC 1.5 Flex Hub EB	398005	DGC 3.5 Flex Hub EB	398009	DGC 5.5 Flex Hub EB
398013	DGC 1.5 Sleeve EB	398017	DGC 3.5 Sleeve EB	398021	DGC 5.5 Sleeve EB
398025	DGC 1.5 Rigid Hub EB	398029	DGC 3.5 Rigid Hub EB	398033	DGC 5.5 Rigid Hub EB
398037	DGC 1.5 EB Hardware Kit	398041	DGC 3.5 EB Hardware Kit	398045	DGC 5.5 EB Hardware Kit
Size 2.0		Size 4.0		Size 6.0	
398002	DGC 2.0 Flex Hub EB	398006	DGC 4.0 Flex Hub EB	398010	DGC 6.0 Flex Hub EB
398014	DGC 2.0 Sleeve EB	398018	DGC 4.0 Sleeve EB	398022	DGC 6.0 Sleeve EB
398026	DGC 2.0 Rigid Hub EB	398030	DGC 4.0 Rigid Hub EB	398034	DGC 6.0 Rigid Hub EB
398038	DGC 2.0 EB Hardware Kit	398042	DGC 4.0 EB Hardware Kit	398046	DGC 6.0 EB Hardware Kit
Size 2.5		Size 4.5		Size 7.0	
398003	DGC 2.5 Flex Hub EB	398007	DGC 4.5 Flex Hub EB	398011	DGC 7.0 Flex Hub EB
398015	DGC 2.5 Sleeve EB	398019	DGC 4.5 Sleeve EB	398023	DGC 7.0 Sleeve EB
398027	DGC 2.5 Rigid Hub EB	398031	DGC 4.5 Rigid Hub EB	398035	DGC 7.0 Rigid Hub EB
398039	DGC 2.5 EB Hardware Kit	398043	DGC 4.5 EB Hardware Kit	398047	DGC 7.0 EB Hardware Kit

Ordering information: standard gear couplings may be orders in 3 different assemblies -

- (1) **Flex-flex** (or full flex): To order a complete flex-flex coupling you need - (2) flex hubs [reborable], (2) sleeves [includes seal], and (1) hardware kit.
- (2) **Flex-rigid**: To order a complete flex-rigid coupling you need - (1) flex hub [reborable], (1) sleeve (includes seal), (1) rigid hub [reborable], and (1) hardware kit.
- (3) **Rigid-rigid**: To order a complete rigid-rigid coupling you need - (2) rigid hubs [reborable], and (1) hardware kit.

DGF shrouded bolt part numbers

Part number	Description	Part number	Description	Part number	Description
Size 1.0		Size 3.0		Size 5.0	
013110	DGF 1.0 Flex Hub SB	013126	DGF 3.0 Flex Hub SB	013142	DGF 5.0 Flex Hub SB
012975	DGF 1.0 Sleeve SB	012979	DGF 3.0 Sleeve SB	012983	DGF 5.0 Sleeve SB
394171	DGF 1.0 SB Hardware Kit	394175	DGF 3.0 SB Hardware Kit	394179	DGF 5.0 SB Hardware Kit
Size 1.5		Size 3.5		Size 5.5	
013114	DGF 1.5 Flex Hub SB	013130	DGF 3.5 Flex Hub SB	013146	DGF 5.5 Flex Hub SB
012976	DGF 1.5 Sleeve SB	012980	DGF 3.5 Sleeve SB	012984	DGF 5.5 Sleeve SB
394172	DGF 1.5 SB Hardware Kit	394176	DGF 3.5 SB Hardware Kit	394180	DGF 5.5 SB Hardware Kit
Size 2.0		Size 4.0			
013118	DGF 2.0 Flex Hub SB	013134	DGF 4.0 Flex Hub SB		
012977	DGF 2.0 Sleeve SB	012981	DGF 4.0 Sleeve SB		
394173	DGF 2.0 SB Hardware Kit	394177	DGF 4.0 SB Hardware Kit		
Size 2.5		Size 4.5			
013122	DGF 2.5 Flex Hub SB	013138	DGF 4.5 Flex Hub SB		
012978	DGF 2.5 Sleeve SB	012982	DGF 4.5 Sleeve SB		
394174	DGF 2.5 SB Hardware Kit	394178	DGF 4.5 SB Hardware Kit		

Ordering information: Standard gear couplings may be ordered in 3 different assemblies -

- (1) **Flex-flex** (or full flex): To order a complete flex-flex coupling you need - (2) flex hubs [reborable], (2) sleeves [includes seal], and (1) hardware kit.
- (2) **Flex-rigid**: To order a complete flex-rigid coupling you need - (1) flex hub [reborable], (1) sleeve (includes seal), (1) rigid hub [reborable], and (1) hardware kit.
- (3) **Rigid-rigid**: To order a complete rigid-rigid coupling you need - (2) rigid hubs [reborable], and (1) hardware kit.

DGC exposed bolt O-ring and gasket part numbers

Part number	Description
398048	DGC 1.0 EB Gasket
398049	DGC 1.5 EB Gasket
398050	DGC 2.0 EB Gasket
398051	DGC 2.5 EB Gasket
398052	DGC 3.0 EB Gasket
398053	DGC 3.5 EB Gasket
398054	DGC 4.0 EB Gasket
398055	DGC 4.5 EB Gasket
398056	DGC 5.0 EB Gasket
398057	DGC 5.5 EB Gasket
398058	DGC 6.0 EB Gasket
398059	DGC 7.0 EB Gasket

Part number	Description
398072	DGC 1.0 EB O-Ring
398073	DGC 1.5 EB O-Ring
398074	DGC 2.0 EB O-Ring
398075	DGC 2.5 EB O-Ring
398076	DGC 3.0 EB O-Ring
398077	DGC 3.5 EB O-Ring
398078	DGC 4.0 EB O-Ring
398079	DGC 4.5 EB O-Ring
398080	DGC 5.0 EB O-Ring
398081	DGC 5.5 EB O-Ring
398082	DGC 6.0 EB O-Ring
398083	DGC 7.0 EB O-Ring

Part number	Description
396345	DGC 1.0 Seal & EB Gasket Kit
396346	DGC 1.5 Seal & EB Gasket Kit
396347	DGC 2.0 Seal & EB Gasket Kit
396348	DGC 2.5 Seal & EB Gasket Kit
396349	DGC 3.0 Seal & EB Gasket Kit
396350	DGC 3.5 Seal & EB Gasket Kit
396351	DGC 4.0 Seal & EB Gasket Kit
396352	DGC 4.5 Seal & EB Gasket Kit
396353	DGC 5.0 Seal & EB Gasket Kit
396354	DGC 5.5 Seal & EB Gasket Kit
396355	DGC 6.0 Seal & EB Gasket Kit
396356	DGC 7.0 Seal & EB Gasket Kit

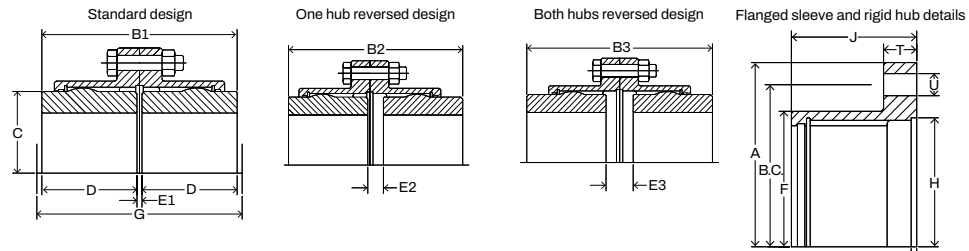


DGF shrouded bolt O-ring and gasket part numbers

Part number	Description
660635	DGF 1.0 SB Gasket
660636	DGF 1.5 SB Gasket
660638	DGF 2.0 SB Gasket
660640	DGF 2.5 SB Gasket
660642	DGF 3.0 SB Gasket
660644	DGF 3.5 SB Gasket
660646	DGF 4.0 SB Gasket
660648	DGF 4.5 SB Gasket
660650	DGF 5.0 SB Gasket
660652	DGF 5.5 SB Gasket

Part number	Description
660591	DGF 1.0 SB O-Ring
660592	DGF 1.5 SB O-Ring
660593	DGF 2.0 SB O-Ring
660594	DGF 2.5 SB O-Ring
660595	DGF 3.0 SB O-Ring
660596	DGF 3.5 SB O-Ring
660597	DGF 4.0 SB O-Ring
660598	DGF 4.5 SB O-Ring
660599	DGF 5.0 SB O-Ring
660600	DGF 5.5 SB O-Ring

DGC Exposed Bolt



Size	Min. bore (in)	Max. bore (in) standard keyway		Max. bore (in) shallow keyway		Hp/100+ RPM	Torque+ (lb-in)	Max. RPM*	Max. parallel offset (in)**	Approx. weight (lbs) ***
		Flex hub	Rigid hub	Flex hub	Rigid hub					
1	0.51	1.94	2.38	2.00	2.44	16	10,090	8,000	0.026	9
1.5	0.79	2.50	2.94	2.56	3.06	33	20,790	6,500	0.034	19
2	1.02	3.00	3.63	3.13	3.75	60	37,800	5,600	0.040	34
2.5	1.26	3.75	4.38	3.88	4.50	105	66,150	5,000	0.050	55
3	1.54	4.38	5.13	4.50	5.31	170	107,100	4,400	0.060	86
3.5	2.01	5.25	5.88	5.44	6.13	260	163,800	3,900	0.072	135
4	2.52	6.00	7.25	6.50	7.38	430	270,900	3,600	0.084	195
4.5	3.03	7.00	8.13	7.19	8.13	590	371,731	3,200	0.094	268
5	3.50	7.44	9.00	7.44	9.00	795	500,952	2,900	0.107	394
5.5	4.02	8.63	10.00	8.63	10.00	1,040	655,200	2,650	0.123	526
6	4.53	9.13	11.00	9.13	11.00	1,270	800,107	2,450	0.132	687
7	5.00	11.00	13.00	11.00	13.00	1,899	1,197,000	2,150	0.155	1,017

+ Ratings are based on standard interference fit.

* For higher RPM applications, contact Dodge customer order engineering at +1 864 284 5700.

** Based on 1.5 degrees angular misalignment per gear mesh for sizes 1 through 5.5, .75 degree angular misalignment per gear mesh for sizes 6 and 7, and maximum bore flex-rigid configurations do not accept parallel misalignment.

*** Approximate weight with minimum bore.

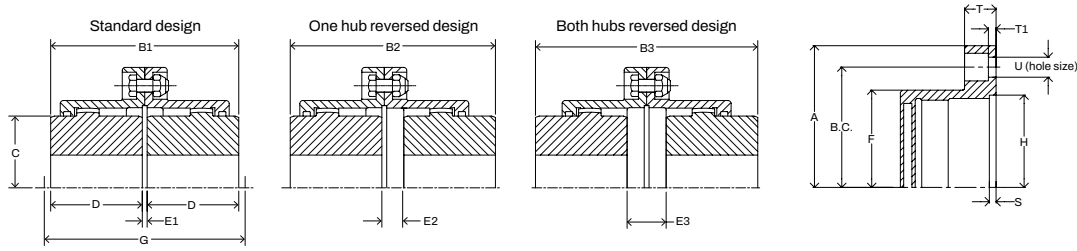
Size	Exposed bolt dimension (in)								
	B1	B2	B3	C	D	E1	E2	E3	G
1	3.50	3.65	3.79	2.70	1.69	0.13	0.27	0.41	4.20
1.5	4.00	4.51	5.01	3.40	1.94	0.13	0.63	1.13	4.77
2	5.00	5.47	5.93	4.14	2.44	0.13	0.59	1.05	6.02
2.5	6.26	6.82	7.39	5.14	3.03	0.19	0.76	1.33	7.12
3	7.38	8.16	8.95	6.00	3.59	0.19	0.98	1.77	8.11
3.5	8.61	9.70	10.77	7.00	4.19	0.25	1.32	2.39	11.64
4	9.73	11.18	12.61	8.25	4.75	0.25	1.68	3.11	10.26
4.5	10.94	12.46	13.99	9.25	5.31	0.31	1.84	3.37	11.50
5	12.38	14.22	16.07	10.00	6.03	0.31	2.16	4.01	13.00
5.5	13.56	16.04	18.52	11.00	6.62	0.31	2.79	5.27	13.81
6	15.13	17.48	19.83	12.00	7.41	0.31	2.66	5.01	17.01
7	17.77	20.52	23.29	14.00	8.69	0.38	3.15	5.92	19.99

* Minimum space required to install and align coupling.

Size	Outside	Flange	Flange thickness		Hub	Undercut	Undercut	Hole	Bolt	Number of bolts
	Dia. A	Width J	T	T1	Dia F	Depth I	Diameter H	Diameter U	Circle B.C.	
1 EB	4.56	1.53	0.56	N/A	3.30	0.09	3.17	0.25	3.75	6
1.5 EB	6.00	1.88	0.75	N/A	4.14	0.09	4.00	0.38	4.81	8
2 EB	7.00	2.34	0.75	N/A	4.98	0.09	4.80	0.50	5.88	6
2.5 EB	8.38	2.82	0.94	N/A	6.10	0.09	5.86	0.63	7.13	6
3 EB	9.44	3.30	0.94	N/A	7.10	0.09	5.40	0.63	8.13	8
3.5 EB	11.00	3.84	1.13	N/A	8.32	0.09	7.86	0.75	9.50	8
4 EB	12.50	4.38	1.13	N/A	9.66	0.31	9.25	0.75	11.00	8
4.5 EB	13.63	4.84	1.13	N/A	10.79	0.31	10.25	0.75	12.00	10
5 EB	15.31	5.54	1.50	N/A	12.04	0.31	11.43	0.88	13.50	8
5.5 EB	16.75	6.22	1.50	N/A	13.16	0.31	12.43	0.88	14.50	14
6 EB	18.00	6.66	1.00	N/A	14.41	0.31	14.00	0.88	15.75	14
7 EB	20.75	7.70	1.13	N/A	16.73	0.25	16.00	1.00	18.25	16

EB = exposed bolt pattern

DGF Shrouded Bolt



Size	Min. bore (in)	Max. bore (in) standard keyway		Max. bore (in) shallow keyway		Hp/100+ RPM	Torque+ (lb-in)	Max. RPM*	Max. parallel offset (in)**	Approx. weight (lbs)***
		Flex hub	Rigid hub	Flex hub	Rigid hub					
1	0.438	1.625	2.188	1.750	2.313	12	7,500	6,000	0.055	9
1.5	0.690	2.125	2.813	2.250	3.063	30	18,900	5,500	0.060	19
2	0.940	2.750	3.500	3.000	3.750	50	31,500	5,000	0.085	34
2.5	1.440	3.250	4.250	3.375	4.500	90	56,700	4,400	0.105	55
3	1.440	4.000	4.875	4.250	5.250	150	94,500	4,000	0.115	86
3.5	1.810	4.625	5.625	4.875	6.125	240	151,300	3,500	0.130	135
4	2.440	5.375	6.500	5.625	6.875	350	220,600	3,000	0.150	195
4.5	3.000	6.000	7.375	6.438	8.000	480	302,500	2,700	0.175	268
5	3.000	6.500	8.375	7.000	8.875	690	434,900	2,500	0.200	394
5.5	4.000	7.500	9.250	7.875	9.875	910	573,500	2,200	0.220	526

+ Ratings are based on standard interference fit.

* For higher RPM applications, contact Dodge customer order engineering at +1 864 284 5700.

** Based on 1.5 degrees angular misalignment per gear mesh for sizes 1 through 5.5, 0.75 degree angular misalignment per gear mesh for sizes 6 and 7, and maximum bore flex-rigid configurations do not accept parallel misalignment.

*** Approximate weight with minimum bore.

Size	Shrouded bolt dimension (in)								
	B1	B2	B3	C	D	E1	E2	E3	G
1	3.50	3.81	4.13	2.31	1.69	0.13	0.44	0.75	4.19
1.5	4.00	4.25	4.50	3.00	1.94	0.13	0.38	0.63	4.75
2	5.00	5.81	6.38	4.00	2.44	0.13	0.81	1.50	6.00
2.5	6.25	7.03	7.81	4.63	3.03	0.19	0.97	1.75	7.13
3	7.38	8.03	8.69	5.63	3.59	0.19	0.84	1.50	8.13
3.5	8.63	9.19	9.75	6.50	4.19	0.25	0.81	1.38	9.38
4	9.75	10.44	11.13	7.50	4.75	0.25	0.94	1.63	10.25
4.5	10.94	12.00	13.06	8.50	5.31	0.31	1.38	2.44	11.50
5	12.38	13.72	15.06	9.50	6.03	0.31	1.66	3.00	13.00
5.5	14.13	15.34	16.56	10.50	6.91	0.31	1.53	2.75	14.38

* Minimum space required to install and align coupling.

Size	Outside	Flange	Flange thickness		Hub	Undercut	Undercut	Hole	Bolt	Number of bolts
	Dia. A	Width J	T	T1	Dia F	Depth I	Dia. H	Dia. U	Circle B.C.	
1 SB	4.56	1.53	0.56	0.50	3.06	0.09	2.81	0.25	3.75	6
1.5 SB	6.00	1.88	0.75	0.50	3.97	0.09	3.60	0.38	4.81	8
2 SB	7.00	2.34	0.75	0.50	4.86	0.09	4.56	0.50	5.88	10
2.5 SB	8.38	2.82	0.94	0.31	5.84	0.09	5.44	0.63	7.13	10
3 SB	9.44	3.30	0.94	0.31	6.84	0.09	6.44	0.63	8.13	12
3.5 SB	11.00	3.84	1.13	0.38	7.91	0.09	7.38	0.75	9.50	12
4 SB	12.50	4.38	1.13	0.38	9.25	0.31	8.75	0.75	11.00	14
4.5 SB	13.63	4.84	1.13	0.38	10.38	0.31	9.75	0.75	12.00	14
5 SB	15.31	5.54	1.50	0.56	11.56	0.31	10.75	0.88	13.50	14
5.5 SB	16.75	6.22	1.50	0.56	12.72	0.31	12.13	0.88	14.50	16

Exposed bolt dimensions (in)

SB = shrouded bolt pattern



Dodge Industrial, Inc.

1061 Holland Road, Simpsonville, SC 29681

+1 864 297 4800

dodgeindustrial.com

Dodge Industrial, Inc. reserves all rights in this document and in the subject matter and illustrations contained therein. We reserve the right to modify contents without prior notice and do not accept responsibility for potential errors or possible lack of information in this document. Dodge Industrial, Inc. Terms and Conditions apply. Any reproduction, disclosure to third parties or utilization of its contents—in whole or in parts—is forbidden without prior written consent of Dodge Industrial, Inc.

© Copyright Dodge Industrial, Inc. All rights reserved. Specifications subject to change without notice.
An RBC Bearings company.

BR3CP01-11.22