

Inboard Shaft Guard Instruction Manual

These instructions must be read thoroughly before installation or operation. This instruction manual was accurate at the time of printing. Please see dodgeindustrial.com for updated instruction manuals.

WARNING: To ensure the drive is not unexpectedly started, turn off and lock-out or tag power source before proceeding. Failure to observe these precautions could result in bodily injury.

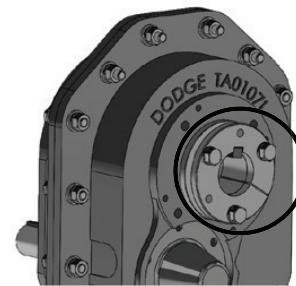
WARNING: All products over 25 kg (55 lbs) are noted on the shipping package. Proper lifting practices are required for these products.

INSTALLING THE ADAPTER

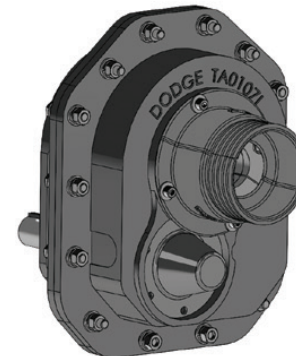
1. Unpack the components. See Table 1 for hardware sizes and quantities.

Table 1—Hardware Sizes and Quantities			
Guard Size	Bolt Size	No. of Bolts	No. of Washers
0	1/4-20 x 3/8	4	4
1	1/4-20 x 3/8	4	4
2	1/4-20 x 3/8	6	6
3	1/4-20 x 3/8	6	6
4	1/4-20 x 3/8	6	6
5	1/4-20 x 1/2	6	6
6	1/4-20 x 1/2	6	6
7	1/4-20 x 1/2	6	6
8	1/4-20 x 1/2	6	6
9	1/4-20 x 1/2	6	6
10	1/4-20 x 1/2	6	6
12	1/4-20 x 1/2	6	6

2. If an existing cover is on the TAIL inboard shaft, remove the cover and clean the surface before attempting to install the new inboard shaft guard.



3. Once the surface is clean, place one half of the adapter in line with two of the existing bolt hole locations.
4. With the adapter half in place, screw down bolts and washers until hand-tight.



5. Repeat steps 3 and 4 with the other half of the adapter.
6. Once both halves are installed, tighten all bolts to **60 in-lbs.**

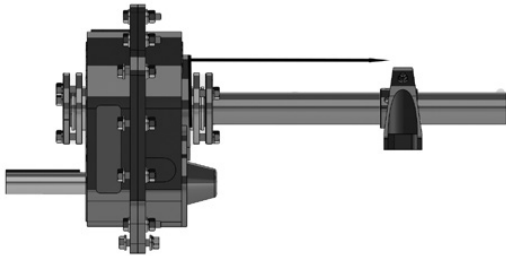
WARNING: Because of the possible danger to person(s) or property from accidents which may result from the improper use of products, it is important that correct procedures be followed. Products must be used in accordance with the engineering information specified in the catalog. Proper installation, maintenance and operation procedures must be observed. The instructions in the instruction manuals must be followed. Inspections should be made as necessary to assure safe operation under prevailing conditions. Proper guards and other suitable safety devices or procedures as may be desirable or as may be specified in safety codes should be provided, and are neither provided by Dodge® nor are the responsibility of Dodge. This unit and its associated equipment must be installed, adjusted and maintained by qualified personnel who are familiar with the construction and operation of all equipment in the system and the potential hazards involved. When risk to persons or property may be involved, a holding device must be an integral part of the driven equipment beyond the speed reducer output shaft.

INSTALLING THE EXTENSION

1. Unpack the components. See Table 2 for hardware sizes and quantities.

Extension Size	Bolt Size	No. of Bolts	No. of Washers	No. of Nuts
0	1/4-20 x 5/8	4	4	4
1	1/4-20 x 5/8	4	4	4
2	1/4-20 x 5/8	6	6	6
3	1/4-20 x 5/8	6	6	6
4	1/4-20 x 5/8	6	6	6
5	3/8-16 x 1-1/8	6	6	6
6	3/8-16 x 1-1/8	8	8	8
7	3/8-16 x 1-1/8	8	8	8
8	3/8-16 x 1-1/8	8	8	8
9	3/8-16 x 1-1/8	10	10	10
10	1/2-13 x 1-1/8	10	10	10
12	1/2-13 x 1-1/8	12	12	12

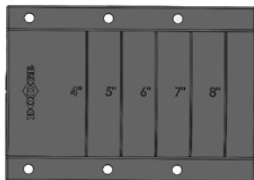
2. Before installing the extension, measure the distance between the face of the gearbox and the connecting equipment.



3. Once this distance is known, use the reference measurements on the OD of the extension to cut it to the appropriate length. For longer distances, it may be beneficial to have the extension reach over top of the connecting piece of equipment for extra support.

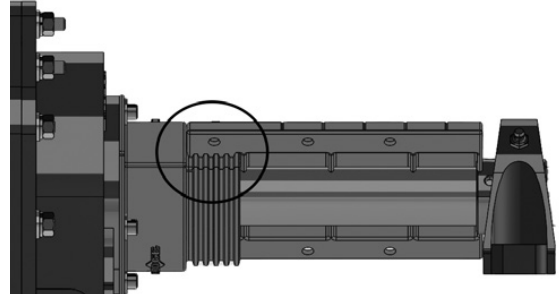
NOTE: The markings shown on the OD of the extension already factor in the length of the adapter, thus there should be no additional measurement factors necessary.

NOTE: In cases with stepped shafts, the internal baffles can be modified by the customer.

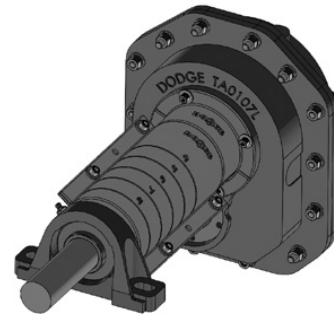


Dodge Industrial, Inc.
1061 Holland Road
Simpsonville, SC 29681
+1 864 297 4800

4. With the extensions cut to length, use the ribs located on the inside of the extensions to clamp around the ribs on the outside of the adapter.



5. Pinch the flanges of both halves tight to ensure the ribs of the extension are fully engaged with the ribs of the adapter.
NOTE: The ribs allow for an adjustment in 1/4" increments if necessary. A minimum of 3 ribs should be engaged between the adapter and extension if adjustments are required.
6. Install a bolt on each side of the extension in the holes located beside the ribs and hand-tighten.
7. With the first two bolts secured, place hardware in the appropriate holes that remain.



8. Once all the bolts have been installed, use Table 3 to locate the appropriate torque needed for the size guard being used.

Bolt Size	Torque (in-lbs)
1/4-20	40
3/8-16	60
1/2-13	100

