



FEATURES/BENEFITS

D-FLEX Couplings



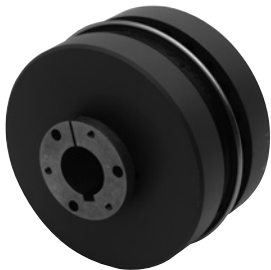
FLEXIBLE SOLUTIONS LOW COST TYPE J COUPLINGS OFFERED IN FOUR SIZES

- Features zinc die-cast flanges that are bored to size
- Accommodates applications through 10 HP at 1750 RPM
- Available with EPDM or Neoprene sleeves
- Shaft attachment with two setscrews at 65°



TYPE S COUPLINGS FEATURE AGMA 9 BALANCED FLANGES OFF THE SHELF

- High-strength, cast iron flanges that are finished bored for AGMA clearance fit
- Ionized powder coated flanges for superior corrosion protection
- Available with EPDM, Neoprene or Hytel* sleeves
- Shaft attachment with two setscrews at 65°



TYPE B COUPLINGS OFFERED WITH STANDARD QD† BUSHING SHAFT ATTACHMENT

- Constructed from high-strength cast iron
- Available with EPDM or Neoprene sleeves



TYPE SC SPACER COUPLINGS SATISFY STANDARD SPACING REQUIREMENTS FOR PUMP APPLICATIONS

- Accommodates ANSI and ISO standard between shaft end dimensions, with custom spacer dimensions available on demand
- Features AGMA 9 balanced flanges & drop-out center for easy equipment maintenance
- Available with EPDM, Neoprene or Hytrel sleeves
- Uses H & HS shaft hubs that are bored to size for slip fit or offered with plain bore for reborning
- Shaft attachment with two setscrews at 65°
- Shaft hub flats are used for holding shafts stationary while loosening or tightening grade 8 bolts

★ Registered trademark of DuPont

† QD is a registered trademark of Emerson Electric Co.



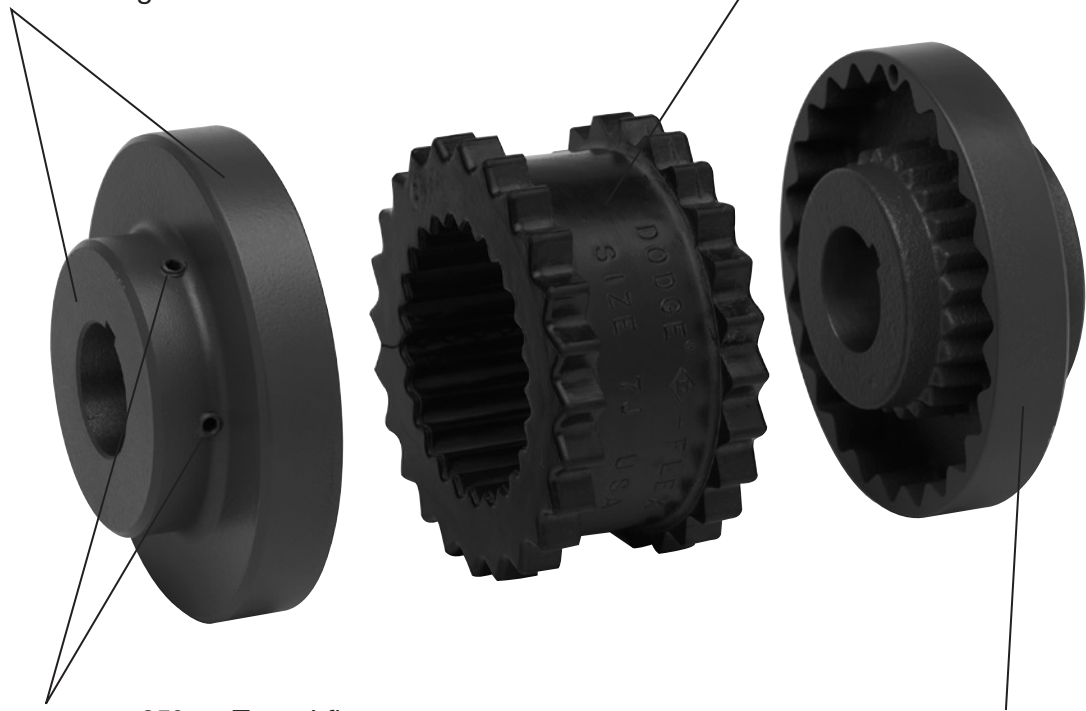
FEATURES/BENEFITS

D-FLEX Couplings

ADDED VALUE

Outside diameter concentric to bore for ease in alignment

Rounded EPDM and Neoprene element edges for full tooth engagement, even load distribution, and reduced stress build up at edges



Two setscrews at 65° on Type J flanges, Type S flanges & Type SC-H hubs for optimum shaft attachment. Holding force is 10% greater than two setscrews at 90°

Type S and SC flanges are balanced to AGMA 9 specifications for reduced vibration

ATEX Approved



- All documents and markings included with standard product

INTERCHANGEABLE COMPONENTS MAKES INSTALLATION QUICK AND EASY

- Interchangeable with other elastomeric sleeve couplings
- Slides into position for snug fit

NO LUBRICATION ASSURES TROUBLE-FREE OPERATION

- No metal-to-metal contact
- Provides clean, quiet, trouble-free performance

NOTE: All instruction manuals for D-FLEX Coupling and QD and TL Bushings available on www.baldor.com



D-FLEX

SPECIFICATION

D-FLEX Couplings employ a molded, non-lubricated elastomeric flexing sleeve loaded in shear. The flexible sleeve shall be of EPDM, Neoprene, or Hytrel. The compound of EPDM shall be suitable for operation in ambient temperature from -30°F to +275°F, Neoprene 0°F to +200°F, and Hytrel -65°F to +250°F. Both EPDM and Neoprene sleeves shall have torsional flexing capability of 15° and accommodate 1° of angular misalignment. Hytrel sleeves, suitable to transmit four times the power of EPDM or Neoprene, has torsional flexing capability of 7° and 1/4° of angular misalignment.

The flexible sleeve is connected with external and internal gear teeth that engage with mating teeth in each flange. The coupling assemblies have optional methods of attachment to the shaft including but not limited to: clearance fit or QD Bushings. Clearance fits are supplied with an industry standard keyway and two set screws, one over the key and one at 65°.

Spacer Couplings consist of two hubs and a center assembly consisting of two spacer spacer flanges and one flexible element. The center assembly is easily removable to facilitate maintenance on pumps or other connected equipment and must be replaceable without disturbing the coupled equipment and without realignment.

D-Flex couplings utilizing EPDM and Neoprene elements are static conductive.

HOW TO ORDER


Standard couplings consist of:

- (2) Flange Assemblies
- (1) Flexible Sleeve

Spacer Couplings consist of:

- (2) Shaft Hubs
- (2) Spacer Flanges
- (1) Flexible Sleeve

NOMENCLATURE



6 JE / 2 - 6J X 7/8

SIZE ———— 6

SLEEVE ———— JE

(JE, JES, E, JN, JNS, N, H, HS)

FLANGE QTY. ———— 2

FLANGE SIZE AND TYPE ———— 6J X

(J, S, B, SC-H)

FLANGE BORE ———— 7/8

For selection method, please refer to page PT1-83

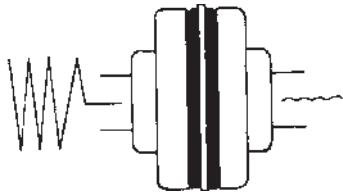
FEATURES/BENEFITS PAGE PT1-23	SELECTION/DIMENSIONS PAGE PT1-26	MODIFICATION/ACCESSORIES PAGE PT1-79	ENGINEERING/TECHNICAL PAGE PT1-81
----------------------------------	-------------------------------------	---	--------------------------------------



SELECTION/DIMENSIONS

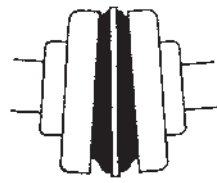
D-FLEX Couplings

FOUR-WAY FLEXING ACTION HANDLES SHOCK, VIBRATION & MISALIGNMENT



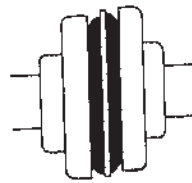
TORSIONAL

Absorbs torsional shock, dampens torsional vibrations



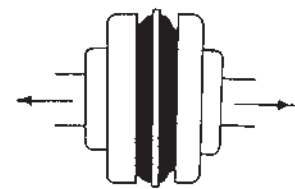
ANGULAR

Allows for angular misalignment



PARALLEL

Minimizes bearing loads, absorbs parallel misalignment with less wear and energy loss



AXIAL

Allows for shaft end-float

D-FLEX Coupling Sleeves

	EPDM Rubber	Neoprene	Hytel(1)
One-Piece Solid Construction	JE	JN	H
One-Piece Split Construction	JES	JNS	-
Two-Piece Construction	E	N	HS
Sizes Offered	3 - 10 JE, JES 4 - 16 E	3 - 10 JN, JNS 4 - 14 N	6 - 12 H, HS
Temperature Range	-30°F to +275°F	0°F to +200°F	-65°F to +250°F
Max Angular	1°	1°	1/4°
Max Parallel(2)	.010" - .062"	.010" - .062"	.010" - .035"
Axial End-Float(2)(3)	.03" - .125"	.03" - .125"	.06" - .125"
Torsional Flexibility	15° Wind Up	15° Wind Up	7° Wind Up
Application Use	General	Good Oil Resistance	Downsizing For Use Of Smaller Couplings

(1) Do not use with J or B flanges or as a replacement for other sleeves

(2) Depends on coupling size.

(3) Increase the E dimension by this amount to accommodate end float.



SELECTION/DIMENSIONS

D-FLEX Couplings

D-FLEX Coupling Sleeves - Part Numbers

Coupling Size	EPDM			Neoprene			Hytrel	
	JE	JES	E	JN	JNS	N	H	HS
3	004208	004242		004209	004243			
4	004210	004244	022190	004211	004245	022211		
5	004212	004246	022191	004213	004247	022212		
6	004214	004248	022192	004215	004249	022213	022183	022232
7	004216	004250	022193	004217	004251	022214	022184	022233
8	004218	004252	022194	004219	004253	022215	022185	022234
9	004220	004254	022195			022216	022186	022235
10	004222	004256	022196			022217	022187	022236
11			022197			022218	022188	022237
12			022198			022219	022189	022238
13			021990			021993		022239
14			021991			021994		425730
16			021992					

D-FLEX Flange/Sleeve Compatibility

Flange Style	EPDM		Neoprene		Hytrel	
	JE/JES 1 Piece	E 2 Piece	JN/JNS 1 Piece	N 2 Piece	H 1 Piece	HS 2 Piece
Type J	√	√	√	√		
Type S	√	√	√	√	√	√
Type B Bushed	√	√	√	√		
SC Spacer	√	√	√	√	√	√

D-FLEX Section/Ratings Data

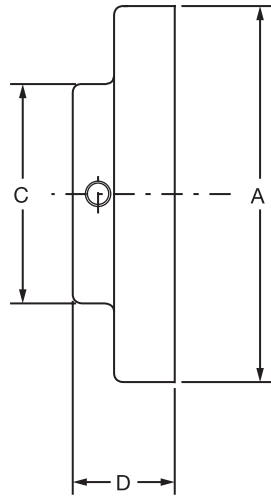
Element Size	Max. Bore				Max RPM	EPDM & Neoprene		Hytrel	
	Straight Bore			Bushes		HP/100	Rated Torque (In-Lbs)	HP/100	Rated Torque (In-Lbs)
	Type J	Type S	Type SC	Type B					
3	7/8	-	-	-	9200	0.10	60	-	-
4	1	-	-	-	7600	0.19	120	-	-
5	1-1/8	1-1/4	1-1/8	-	7600	0.38	240	-	-
6	1-3/8	1-7/8	1-3/8	1-3/16	6000	0.71	450	2.90	1,800
7	-	1-7/8	1-5/8	1-3/16	5250	1.20	725	4.60	2,875
8	-	2-3/8	1-7/8	1-5/8	4500	1.80	1,135	7.20	4,530
9	-	2-7/8	2-1/8	1-15/16	3750	2.80	1,800	11.40	7,200
10	-	3-3/8	2-3/8	2-1/2	3600	4.60	2,875	18.00	11,350
11	-	3-7/8	2-7/8	2-13/16	3600	7.20	4,530	28.60	18,000
12	-	3-15/16	2-7/8	3-1/2	2800	11.40	7,200	50.00	31,500
13	-	4-1/2	3-3/8	3-15/16	2400	18.00	11,350	75.00	47,268
14	-	5	3-7/8	3-15/16	2200	28.60	18,000	115.00	72,480
16	-	6	-	4-1/2	1500	75.00	47,250	-	-

FEATURES/BENEFITS PAGE PT1-23	SPECIFICATION/HOW TO ORDER PAGE PT1-26	MODIFICATION/ACCESSORIES PAGE PT1-79	ENGINEERING/TECHNICAL PAGE PT1-81
----------------------------------	---	---	--------------------------------------

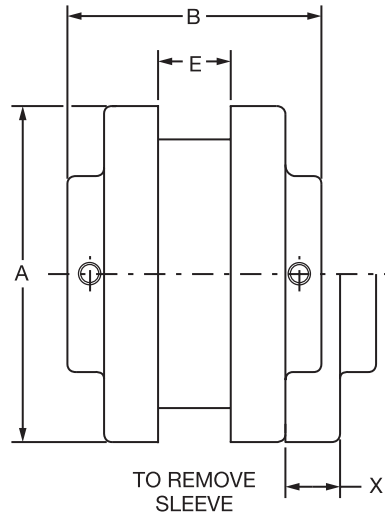


SELECTION/DIMENSIONS

D-FLEX Couplings TYPE "J" COUPLING DIMENSIONS



TYPE "J" FLANGE



TYPE "J" COUPLING

Dimensions

Coupling Size	Min. Bore	Max. Bore	HP/100	EPDM/Neoprene Torque (in.-lbs.)	Max. RPM	A	B	C	D	E	X	Weight (lbs.)	Inertia (lbs ft ²)
3J	3/8	7/8	0.10	60	9200	2.06	2.00	1.50	0.81	0.38	0.56	0.03	
4J	1/2	1	0.19	120	7600	2.46	2.38	1.63	0.88	0.63	0.75	0.04	
5J	1/2	1-1/8	0.38	240	7600	3.25	2.88	1.88	1.06	0.75	0.97	0.09	
6J	5/8	1-3/8	0.71	450	6000	4.00	3.31	2.50	1.22	0.88	1.09	1.20	

6J Minimum bore - 5/8"

Part Numbers

Bore (in.)	Coupling Flange			
	3J	4J	5J	6J
3/8	022700			
1/2	022701	022708	022714	
5/8	022702	022709	022715	022721
3/4	022703	022710	022716	022722
7/8	022704	022711	022717	022723
15/16		022712	022718	022724
1		022713	022719	022725
1-1/8			022720	022726
1-3/16				022727
1-1/4				022728
1-3/8				022729

 Unless otherwise specified, all Type-J flanges are clearance fit per AGMA 9002.
See page 101 for additional details.

Complete coupling consists of (2) J flanges, and (1) sleeve (from page PT1-39).

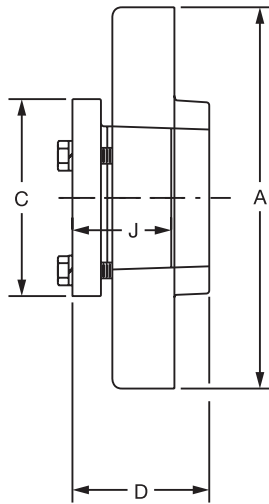
FEATURES/BENEFITS PAGE PT1-23	SPECIFICATION/HOW TO ORDER PAGE PT1-26	MODIFICATION/ACCESSORIES PAGE PT1-79	ENGINEERING/TECHNICAL PAGE PT1-81
----------------------------------	---	---	--------------------------------------



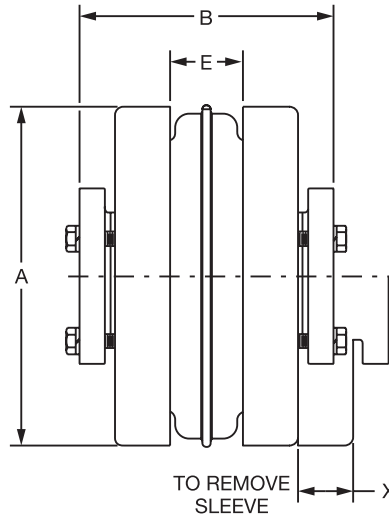
SELECTION/DIMENSIONS

D-FLEX Couplings

TYPE "B" QD BUSHED COUPLING DIMENSIONS



TYPE "B" FLANGE



TYPE "B" COUPLING

Dimensions

Coupling Size	Bushing Type	Min. Bore	Max. Bore#	HP/100	EPDM/Neoprene Torque (in.-lbs.)	Max. RPM	A	B	C	D	E	J	X	Weight (lbs.)+		Inertia (lbs ft ²)
														Flange	Bushing	
6B	JA	1/2	1-3/16	0.71	450	6000	4.00	3.31	2.00	1.53	0.88	1.00	1.09	1.30	0.40	
7B	JA	1/2	1-3/16	1.20	725	5250	4.63	3.44	2.00	1.59	1.00	1.00	1.31	1.90	0.40	
8B	SH	1/2	1-5/8	1.80	1135	4500	5.45	4.06	2.63	1.84	1.13	1.31	1.50	2.90	0.90	
9B	SD	1/2	1-15/16	2.80	1800	3750	6.35	4.63	3.19	2.19	1.44	1.81	1.75	4.80	1.60	
10B	SK	1/2	2-1/2	4.60	2875	3600	7.50	5.63	3.88	1.84	1.63	1.94	2.00	7.80	2.70	
11B	SF	1/2	2-15/16	7.20	4530	3600	8.63	6.56	4.63	2.13	1.88	2.00	2.38	12.00	3.80	
12B	E	7/8	3-1/2	11.40	7200	2800	10.00	7.94	6.00	2.69	2.31	2.75	2.69	18.00	9.00	
13B	F	1	3-15/16	18.00	11350	2400	11.75	9.31	6.63	3.69	2.69	3.75	3.00	31.20	14.00	
14B	F	1	3-15/16	28.60	18000	2200	13.88	10.44	6.63	3.69	3.25	3.75	3.50	51.40	14.00	
16B	J	1-1/2	4-1/2	75.00	47250	1500	18.88	13.25	7.25	4.75	4.75	4.63	4.50	120.00	21.00	

Max bore with shallow key

+ Approximate weight for each flange; average weight for each bushing

Part Numbers

	6B	7B	8B	9B	10B	11B	12B
Part No.	022501	022502	022503	022504	022505	022506	022507

	13B	14B	16B
Part No.	022508	022509	022510

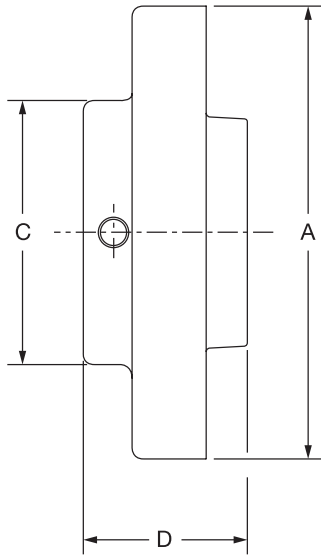
Complete coupling consists of (2) B flanges, (1) sleeve and (2) QD Bushings. QD Bushings must be ordered separately (from page PT6-16).

FEATURES/BENEFITS PAGE PT1-23	SPECIFICATION/HOW TO ORDER PAGE PT1-26	MODIFICATION/ACCESSORIES PAGE PT1-79	ENGINEERING/TECHNICAL PAGE PT1-81
----------------------------------	---	---	--------------------------------------

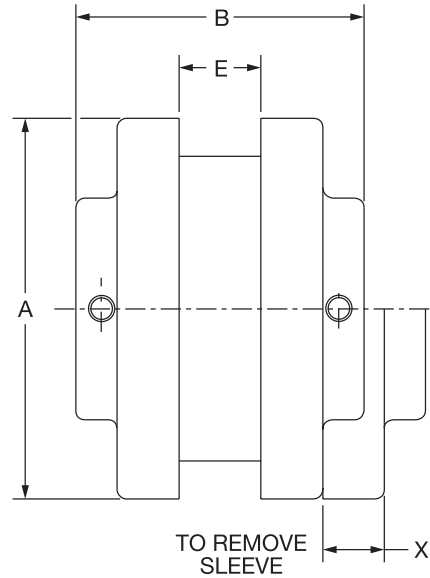


SELECTION/DIMENSIONS

D-FLEX Couplings TYPE "S" COUPLING DIMENSIONS



TYPE "S" FLANGE



TYPE "S" COUPLING

Dimensions

Coupling Size	Min. Bore	Max. Bore#	HP/100*	Torque* (in.-lbs.)	Max. RPM	A	B	C	D	E	X	Weight (lbs.)
5S	1/2	1-1/4	0.38	240	7600	3.25	2.81	1.88	1.34	0.75	0.97	1.1
6S	1/2	1-1/2							1.63			1.9
6S	1-9/16	1-3/4	0.71	450	6000	4	3.5	2.81	1.31	0.88	1.09	1.8
6S	1-13/16	1-7/8							1.31			1.8
7S	1/2	1-7/8	1.2	725	5250	4.63	3.94	2.81	1.84	1	1.31	2.6
8S	1/2	2-1/8	1.8	1135	4500	5.45	4.44	3.25	2.09	1.13	1.5	4.4
8S	2-3/16	2-3/8							1.66			3.7
9S	7/8	2-1/2	2.8	1800	3750	6.35	5.06	4.13	2.41	1.44	1.75	6.5
9S	2-9/16	2-7/8							1.81			6.2
10S	1-1/8	2-7/8	4.6	2875	3600	7.5	5.69	4.75	2.72	1.63	2	10.5
10S	2-15/16	3-3/8							2.03			9.8
11S	1-1/4	2-1/8							3.44			18.1
11S	2-3/16	2-3/4	7.2	4530	3600	8.63	7.13	5.63	3.44	1.88	2.38	17.9
11S	2-13/16	3-3/8							3.44			16.6
11S	3-7/16	3-7/8							2.63			16.4
12S	1-1/2	2-1/8										27.8
12S	2-3/16	2-7/8	11.4	7200	2800	10	8.25	5.75	4	2.31	2.69	27.5
12S	2-15/16	3-15/16										26.6
13S	2" Reb.	4-1/2	18	11350	2400	11.75	9.25	6.75	4.38	2.69	3.06	45.2
14S	2" Reb.	5	28.6	18000	2200	13.88	9.88	7.5	4.5	3.25	3.5	69.1
16S	2" Reb.	6	75	47250	1500	18.88	14.25	8	6	4.75	4.25	125.3

Max bore with shallow keyway. For max bore with standard keyway, see page PT1-43

* Ratings based on EPDM & Neoprene. For Hytrel ratings, see page PT1-39

FEATURES/BENEFITS PAGE PT1-23	SPECIFICATION/HOW TO ORDER PAGE PT1-26	MODIFICATION/ACCESSORIES PAGE PT1-79	ENGINEERING/TECHNICAL PAGE PT1-81
----------------------------------	---	---	--------------------------------------



SELECTION/DIMENSIONS

D-FLEX Couplings

Type "S" Coupling Flange - Part Numbers

Bore (in.)	Coupling Flange Size										
	5S	6S	7S	8S	9S	10S	11S	12S	13S	14S	16S
Reborable	004976	004977	004978	004979	004980	004981	004982	004983	004993	004994	004995
Finished Bore Flanges											
1/2	004498										
5/8	004500	004511	004534								
3/4	004502	004513	004536	004559							
7/8	004504	004515	004538	004561	004586						
15/16	004505	004516	004539	004562	004587						
1	004506	004517	004540	004563	004588						
1-1/8	004508	004519	004542	004565	004590	004619					
1-3/16	* 004509	004520	004543	004566	004591	004620					
1-1/4	† 004510	004521	004544	004567	004592	004621	004656				
1-5/16		004522	004545	004568	004593	004622	004657				
1-3/8		004523	004546	004569	004594	004623	004658				
1-7/16		* 004524	004547	004570	004595	004624	004659				
1-1/2		† 004525	004548	004571	004596	004625	004660	004696			
1-5/8		004527	* 004550	004573	004598	004627	004662	004698			
1-11/16		004528	004551	004574	004599	004628	004663	004699			
1-3/4		004529	004552	004575	004600	004629	004664	004700			
1-7/8		004531	† 004554	004577	004602	004631	004666	004702			
1-15/16				004578	004603	004632	004667	004703			
2				004579	004604	004633	004668	004704			
2-1/8				† 004581	004606	004635	004670	004706			
2-3/16				004582	004607	004636	004671	004707			
2-1/4				004583	004608	004637	004672	004708			
2-3/8				004585	* 004610	004639	004674	004710	004996		
2-7/16					004611	004640	004675	004711			
2-1/2					† 004612	004641	004676	004712			
2-5/8					004614	004643	004678	004714			
2-11/16					004615	004644	004679	004715			
2-3/4					004616	* 004645	004680	004716			
2-7/8					004618	† 004647	004682	004718	004997	004998	
2-15/16						004648	004683	004719			
3						004649	004684	004720			
3-1/8						004651	004686	004722			
3-1/4						004653	004688	004724			
3-5/16						004654	004689	004725			
3-3/8						004655	*† 004690	004726			
3-7/16							004691	004727			
3-1/2							004692	004728			
3-5/8							004693	004730			
3-11/16								004731			
3-3/4							004694	004732			
3-7/8							004695	*† 004734			
3-15/16								004735			

Unless otherwise specific, all Type-S flanges are clearance fit per AGMA 9002.

See page 101 for additional details.

† Max bore for reborable flanges.

***Max bore with std. square keyway. Larger bores have rectangular keyways & keys supplied.**

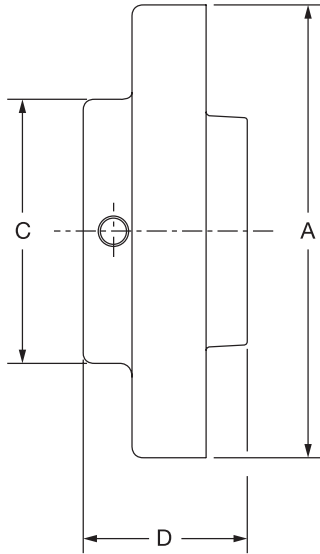
Complete coupling consists of (2) S flanges and (1) sleeve (from page PT1-39).

FEATURES/BENEFITS PAGE PT1-23	SPECIFICATION/HOW TO ORDER PAGE PT1-26	MODIFICATION/ACCESSORIES PAGE PT1-79	ENGINEERING/TECHNICAL PAGE PT1-81
----------------------------------	---	---	--------------------------------------

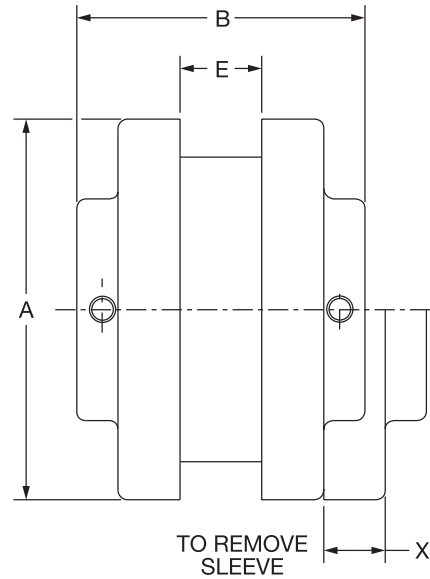


SELECTION/DIMENSIONS

D-FLEX Couplings TYPE "S" COUPLING DIMENSIONS - METRIC



TYPE "S" FLANGE



TYPE "S" COUPLING

Dimensions

Coupling Size	Min. Bore (mm)	Max. Bore #	Watts/100*	Torque* (N-m)	Max. RPM	A (mm)	B (mm)	C (mm)	D (mm)	E (mm)	X (mm)	Mass (kg)
5S	12.7	30	283	27.1	7600	82.6	71.4	48	34	19	25	0.5
6S	12.7	38	530	51	6000	101.6	89	71	41	22	28	0.9
7S	12.7	42	895	82	5250	117.6	100	71	47	25	33	1.2
8S	12.7	50	1343	128	4500	138.4	113	83	53	29	38	2.0
9S	22.2	60	2089	203	3750	161.3	129	92	61	37	44	2.9
10S	28.0	70	3432	325	3600	190.5	145	111	69	41	51	4.8
11S	30.0	95	5371	512	3600	219.2	181	143	87	48	60	8.2
12S	38.0	100	8504	814	2800	254.0	210	146	102	59	68	12.6
13S	50.8	114	13428	1282	2400	298.5	235	171	111	68	78	20.5
14S	50.8	127	21336	2034	2200	352.6	251	191	114	83	89	31.3
16S	50.8	140	55950	5339	1500	479.6	362	203	152	121	108	56.8

Max bore with shallow keyway. For max bore with standard keyway, see page PT1-43

* Ratings based on EPDM & Neoprene. For Hytrel ratings, see page PT1-39



SELECTION/DIMENSIONS

D-FLEX Couplings

Type "S" Coupling Flange - Part Numbers - Metric

Bore (mm)	Coupling Flange Size							
	5S	6S	7S	8S	9S	10S	11S	12S
14mm	004856	004865	004878	004893	004911			
16mm	004857	004866	004879	004894	004912			
18mm	004858	004867	004880	004895	004913			
19mm	004859	004868	004881	004896	004914			
20mm	004860	004869	004882	004897	004915			
22mm	004861	004870	004883	004898	004916			
24mm	004862	004871	004884	004899	004917			
25mm	004863	004872	004885	004900	004918			
28mm	004864	004873	004886	004901	004919	004928		
30mm		004874	004887	004902	004920	004929	004942	
32mm		004875	004888	004903	004921	004930	004943	
35mm		004876	004889	004904	004922	004931	004944	
38mm			004890	004905	004923	004932	004945	004960
40mm			004891	004906	004924	004933	004946	004961
42mm			004892	004907	004925	004934	004947	004962
45mm				004908	004926	004935	004948	004963
48mm				004909	004927	004936	004949	004964
50mm				004910		004937	004950	004965
55mm						004938	004951	004966
60mm						004939	004952	004967
65mm						004940	004953	004968
70mm						004941	004954	004969
75mm							004955	004970
80mm							004956	004971
85mm							004957	004972
90mm							004958	004973
95mm							004959	004974
100mm								004975

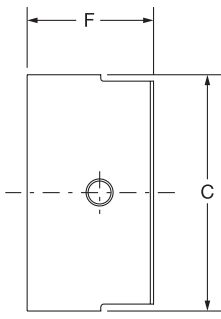
Complete coupling consists of (2) S flanges and (1) sleeve (from page PT1-39).

FEATURES/BENEFITS PAGE PT1-23	SPECIFICATION/HOW TO ORDER PAGE PT1-26	MODIFICATION/ACCESSORIES PAGE PT1-79	ENGINEERING/TECHNICAL PAGE PT1-81
----------------------------------	---	---	--------------------------------------

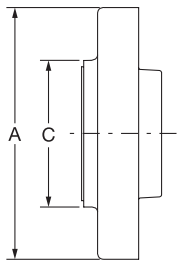


SELECTION/DIMENSIONS

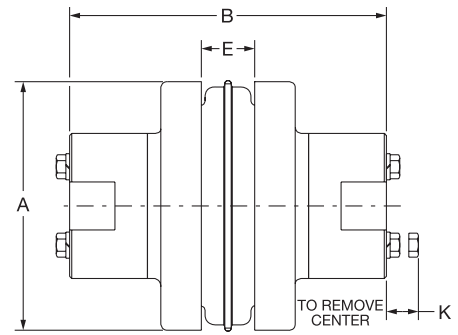
D-FLEX Couplings TYPE "SC" COUPLING DIMENSIONS



SHAFT HUB



SPACER FLANGE



COMPLETE SPACER COUPLING

Dimensions (1)

Cplg. Size	BSE	Flange Number	Shaft Hub		Max. Bore (2)		A	(3) B	C	E	F		K	Wt. (4) (lbs.)
			H	HS	H	HS					H	HS		
5SC	3.50	5SC35	5H	-	1-1/8	-	3.25	5.63	2.00	0.75	1.09	-	0.56	4.50
	3.50	6SC35	6H	---	1-3/8	-	4.00	5.88	2.50	0.88	1.22	-	0.75	7.30
	4.38	6SC44	6H	-	1-3/8	-		6.75	2.50		1.22			8.10
6SC	5.00	6SC50	6H	-	1-3/8	-		7.88	2.50		1.22			8.70
	3.50	7SC35	7H	---	1-5/8	-	4.63	6.38	2.81	1.00	1.47	-	0.63	9.90
	4.38	7SC44	7H	-	1-5/8	-		7.25	2.81		1.47			10.80
7SC	5.00	7SC50	7H	-	1-5/8	-		7.88	2.81		1.47			11.40
	3.50	8SC35	8H	-	1-7/8	-	5.45	6.88	3.25	1.13	1.72		0.81	15.20
	3.50	8SC35-10	10H	10HS	2-3/8	1-5/8		9.13	4.38		2.34		0.81	23.20
8SC	4.38	8SC44	8H	-	1-7/8	-		7.75	3.25		1.72	1.66	0.81	16.40
	5.00	8SC50	8H	-	1-7/8	-		8.38	3.25		1.72	1.33	1.19	17.40
	5.00	8SC50-10	10H	10HS	2-3/8	1-5/8		9.63	4.38		2.34		1.19	27.20
	3.50	9SC35	9H	9HS	2-1/8	1-1/2	6.35	7.50	3.63	1.44	1.97	1.53	1.06	18.60
9SC	4.38	9SC44	9H	9HS	2-1/8	1-1/2		8.25	3.63		1.97	1.53	1.06	22.20
	5.00	9SC50	9H	9HS	2-1/8	1-1/2		8.88	3.63		1.97	1.53	1.06	23.20
	5.00	9SC50-11	11H	11HS	2-7/8	1-7/8		10.38	5.25		2.72	1.91	1.19	40.40
	7.00	9SC70-11	11H	11HS	2-7/8	1-7/8		12.38	5.25		2.72	1.91	1.19	48.20
	7.75	9SC78-11	11H	11HS	2-7/8	1-7/8		13.13	5.25		2.72	1.91	1.19	51.00
10SC	4.75	10SC48	10H	10HS	2-3/8	1-5/8	7.50	9.38	4.38	1.63	2.34	1.66	1.19	37.60
	5.00	10SC50	10H	10HS	2-3/8	1-5/8		9.63	4.38		2.34	1.66	1.19	38.40
	7.00	10SC70-13	13H	13HS	3-3/8	2-1/2		13.63	6.13		3.34	2.47	1.88	72.00
	7.75	10SC78-13	13H	13HS	3-3/8	2-1/2		14.63	6.13		3.34	2.47	1.88	76.00
	10.00	10SC100-13	13H	13HS	3-3/8	2-1/2		16.63	6.13		3.34	2.47	1.88	88.00
11SC	4.75	11SC48	11H	11HS	2-7/8	1-7/8	8.63	10.31	5.25	1.88	2.72	1.91	1.19	54.50
	5.00	11SC50	11H	11HS	2-7/8	1-7/8		10.38	5.25		2.72		1.19	54.70
	7.00	11SC70-14	14H	-	3-7/8	-		14.38	6.50		3.84		2.00	86.10
	7.75	11SC78-14	14H	-	3-7/8	-		15.38	6.50		3.84		2.00	90.30
	10.00	11SC100-14	14H	-	3-7/8	-		17.63	6.50		3.84		2.00	102.70
12SC	7.00	12SC70	12H	12HS	2-7/8	2-1/2	10.00	12.88	5.75	2.31	2.97	2.53	1.50	88.10
	7.00	12SC70-14	14H	-	3-7/8	-		14.63	6.50		3.84		2.00	99.10
	7.75	12SC78	12H	12HS	2-7/8	2-1/2		13.63	5.75		2.97		1.50	91.90
	7.75	12SC78-14	14H	-	3-7/8	-		14.38	6.50		3.84		2.00	103.30
	10.00	12SC100-14	14H	-	3-7/8	-		17.63	6.50		3.84		2.00	115.70
13SC	7.75	13SC78	13H	13HS	3-3/8	2-1/2	11.75	14.38	6.13	2.69	3.34	2.47	1.88	129.60
14SC	7.75	14SC78	14H	-	3-7/8	-	13.88	15.38	6.50	3.25	3.84	-	2.00	179.90

(1) Ratings (HP/100, Torque, RPM) same as Type S. See page PT1-42.
 (2) Check shaft hub table on next page for minimum Bore.
 (3) B dimension included H hubs. Dimension will change if one or two HS (short hubs) are used.
 (4) Complete coupling weight at MAX bore.

FEATURES/BENEFITS PAGE PT1-23	SPECIFICATION/HOW TO ORDER PAGE PT1-26	MODIFICATION/ACCESSORIES PAGE PT1-79	ENGINEERING/TECHNICAL PAGE PT1-81
----------------------------------	---	---	--------------------------------------



SELECTION/DIMENSIONS

D-FLEX Couplings

Type "SC" Couplings - Spacer Flange Part Numbers

BSE (in.)	Coupling Size						
	5SC	6SC	7SC	8SC	8SC-10	9SC	9SC-11
3.50	• 022000	• 022001	• 022004	• 022007	• 022775	• 022010	
4.38		• 022002	• 022005	• 022008		• 022011	
5.00		• 022003	• 022006	• 022009	• 022776	• 022012	• 022777
7.00							• 022778
7.75							• 022779

BSE (in.)	Coupling Size							
	10SC	10SC-13	11SC	11SC-14	12SC	12SC-14	13SC	14SC
4.75	• 022013		• 022015					
5.00	• 022014		• 022016					
7.00		022780		022783	• 022017	022786		
7.75		022781		022784	• 022018	022787	021997	021998
10.00		022782		022785		022788		

• Stock flanges

Spacer Shaft Hub Part Numbers

Bore (in.)	Coupling Size									
	5H	6H	7H	8H	9H	10H	11H	12H	13H	14H
Reborable Finished Bore Hubs	• 022220	• 022221	• 022222	• 022223	• 022224	• 022225	• 022226	• 022227	022228	
1/2	022329									
5/8	• 022331	022340	022353							
11/16	022332	022341	022354							
3/4	• 022333	• 022342	022355	022368						
7/8	• 022335	• 022344	• 022357	022370	022387					
15/16	022336	022345	022358	022371	022388					
1	• 022337	• 022346	• 022359	• 022372	022389					
1-1/8	• 022339	• 022348	• 022361	• 022374	022391	022409	0022452			
1-1/8 (1)					• 022392(1)	• 022410(1)	022453(1)			
1-3/16		022349	022362	022375	022393	022411	022454			
1-1/4		• 022350	022363	022376	022394	022412	022455			
1-5/16		022351	022364	022377	022395	022413	022456			
1-3/8		022352	• 022365	• 022378	• 022396	022414	022457			
1-7/16				022379	022397	022415	022458			
1-1/2			• 022366	• 022380	• 022398	022416	022459			
1-9/16				022381	022399	022417	022460			
1-5/8			• 022367	• 022382	• 022400	• 022418	022461			
1-5/8 (1)							022462(1)			
1-3/4				• 022384	• 022402	022420	022464			
1-7/8				• 022386	• 022404	• 022428	• 022466	022483		
1-15/16					022405	022429	022467	022484		
2					022406	022430	022468	022485		
2-1/8					• 022408	• 022432	• 022470	022487	022813(1)	
2-3/16						022433	022471	022488		
2-1/4						022434	022472	022489		
2-5/16						022435	022473	022490		
2-3/8						• 022436	• 022474	022491	022810	• 022815
2-3/8(1)								022492(1)	022814(1)	
2-7/16							022475	022493		
2-1/2							022476	022494		
2-5/8							022478	022496		
2-11/16							022479	022497		
2-3/4							022480	022498		
2-7/8							• 022482	022500	022811	022816
3-3/8									022812	022817
3-7/8										022818

• Stock hub assemblies

(1) HS (Short Hub)

Complete coupling consists of (2) shaft hubs, (2) spacer flanges, and (1) sleeve (from page PT1-39)

FEATURES/BENEFITS PAGE PT1-23	SPECIFICATION/HOW TO ORDER PAGE PT1-26	MODIFICATION/ACCESSORIES PAGE PT1-79	ENGINEERING/TECHNICAL PAGE PT1-81
----------------------------------	---	---	--------------------------------------